

GO TEXAN Certified Retirement Community Application



Paducah, Texas
Crossroads of America

Table of Contents

Tab 1 Completed Application Form

Tab 2 Retiree Desirability Assessment

- A. Community Overview—Demographics, Geography and climate
- B. Texas Tax Structure
- C. Local Housing Availability
- D. Personal Safety, Security and Crime Statistics
- E. Employment Opportunities
- F. Health Care Service
- G. Emergency Medical Services
- H. Public Transportation and Major Highways
- I. Continuing Education
- J. Leisure Living
- K. Recreational Areas and Facilities
- L. Performing Arts
- M. Festivals and Events
- N. Sports at All Levels
- O. Additional Information

Tab 3 Completed Score Sheet

Tab 4 Letters of Support From Community

Tab 5 Marketing Plan

- A. The Mission Statement
- B. Target Market
- C. The Competition
- D. An Analysis of the Community's Strengths, Weaknesses, Opportunities and Dangers (ASWOD)
- E. Strategies the Community Will Employ to Attain Goals

Tab 6 Long –Term Plan

- A. Steps to maintain desirability
- B. Correction Plan for Deficiencies identified

Tab 7 List of Community Retirement Advisory Board

Tab 1
Completed Application Form

Tab 2
Retiree Desirability Assessment



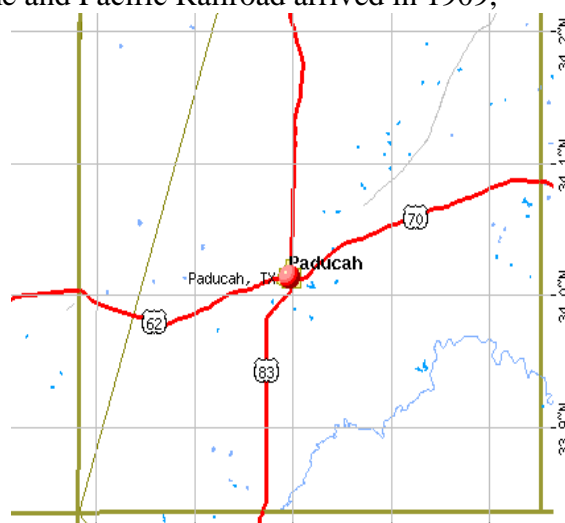
Paducah “Crossroads of America” Retiree Desirability Assessment

Community Overview and Surrounding Area

General Information

Former resident R. Potts, a man who settled in Cottle County sometime around 1850 named Paducah after Paducah, Kentucky. In 1892 Cottle County was organized and Potts’s dream came true. A post office was established in 1891, the Paducah Post founded in 1893, and by 1903 the population was 151. One year after the Quanah, Acme and Pacific Railroad arrived in 1909, Paducah was incorporated with a population of 1350.

Today, Paducah, Texas is the county seat of Cottle County located where US Highway 70 and US Highway 83 intersect connecting the borders of the United States, thus often referred to as the *Crossroads of America*. Paducah is 2 hours or less drive to the cities of Amarillo, Lubbock, Plainview, Abilene, Wichita Falls, TX and Altus OK. Paducah is located in rugged ranch county where cowboys are still respected and admired. Because of this terrain, Paducah boasts of some of the best hunting in the State of Texas, including turkey, dove, quail, wild hogs, and mule and white tail deer.



Paducah, Crossroads of America



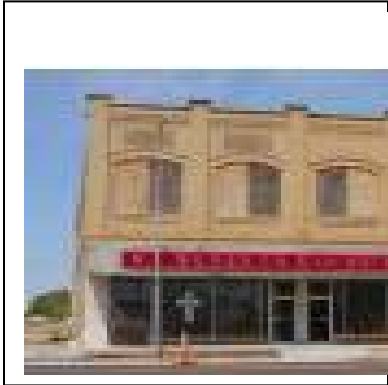
Cottle County Courthouse

Known for its big heart, neighbors are caring and always willing to lead a helping hand. Citizens are friendly, and community focused. Retires can either be an observer or become actively involved in community efforts. There are several projects in progress including efforts to restore the courthouse square’s historical “Palace Theater”. Also among the structures steeped rich in historic fabric is the Cottle County Courthouse, in the center of downtown, the first M.E.

Moses’s Variety Store building on the west side of the square, and the City-County Heritage Museum located in the former Quanah, Acme, and Pacific Railroad Depot. There are brick streets throughout some of the residential sections of the town. The community has several organized events each year that are family focused and fun filled.



One of the brick streets in the residential section of Paducah



First M E Moses Variety Store Building on Courthouse Square

People returning to Paducah to retire find low taxes and a low crime rate. One can make use of the library, the senior citizens' center, and museums. A small medical clinic is available for the usual office visit or the yearly flu shot, and public transportation is available for those needing it. In an emergency, an EMT is usually on site in less than 5 minutes to begin aid with the ambulance quickly following.

The country club with its recent facelift has a golf course, swimming pool and tennis courts. The Old Settlers Reunion and Rodeo, as well as the 4-H's many activities make use of the rodeo arena. Kids and adults alike enjoy the city swimming pool and several city parks with playgrounds where families meet for a great time of fun and relaxation. All this and great home cooked food at local restaurants are inside the city limits while living in the relaxed small community atmosphere. Within a 2 hours drive in all four directions are several cities where one can find most anything they want including universities boasting all sorts of sporting events, cultural activities, and museums. There are military bases, shopping and dining, airports, and several state of the art medical facilities. Getting to any of these is as quick or quicker than possible in the big city with a drive consisting of beautiful scenery, big open skies, fresh air, occasional wildlife, and open roads with little traffic, a welcome change from smog, congestive traffic, and concrete surrounding everything.



Quanah, Acme and Pacific Railroad Depot now our Heritage Museum.

Geography and Climate

Paducah is located at latitude 34.01 N and longitude 100.30 W, at an elevation of 1952. The city is 1.5 square miles in area. The county is 902 Square miles. The area code is 806 and the zip code is 79248. This location is a short distance from the cap-rock, as locals refer to it, where the terrain is rugged ranch land. Cottle County and area are home of the ranches known as the "Sixes", the "Triangle" the "Matadors", "Tongue River" as well as others. The semi-arid climate of Paducah makes outdoor activities possible almost every day of the year. The low relative humidity moderates even the most extreme



temperatures. The average annual rainfall is about 24 inches, with the average annual snowfall about 7 inches. Snow normally lasts only a day or two. The average temperature is 62 degrees F. with average daily high being about 75 and lows about 48 degrees F. July's average high is about 95 with January average low being about 28 degrees F. Gorgeous sunsets can be seen often and pleasant summer evenings and crisp winter nights allow viewing the sky full of bright stars or a bright full harvest moon.

Demographics

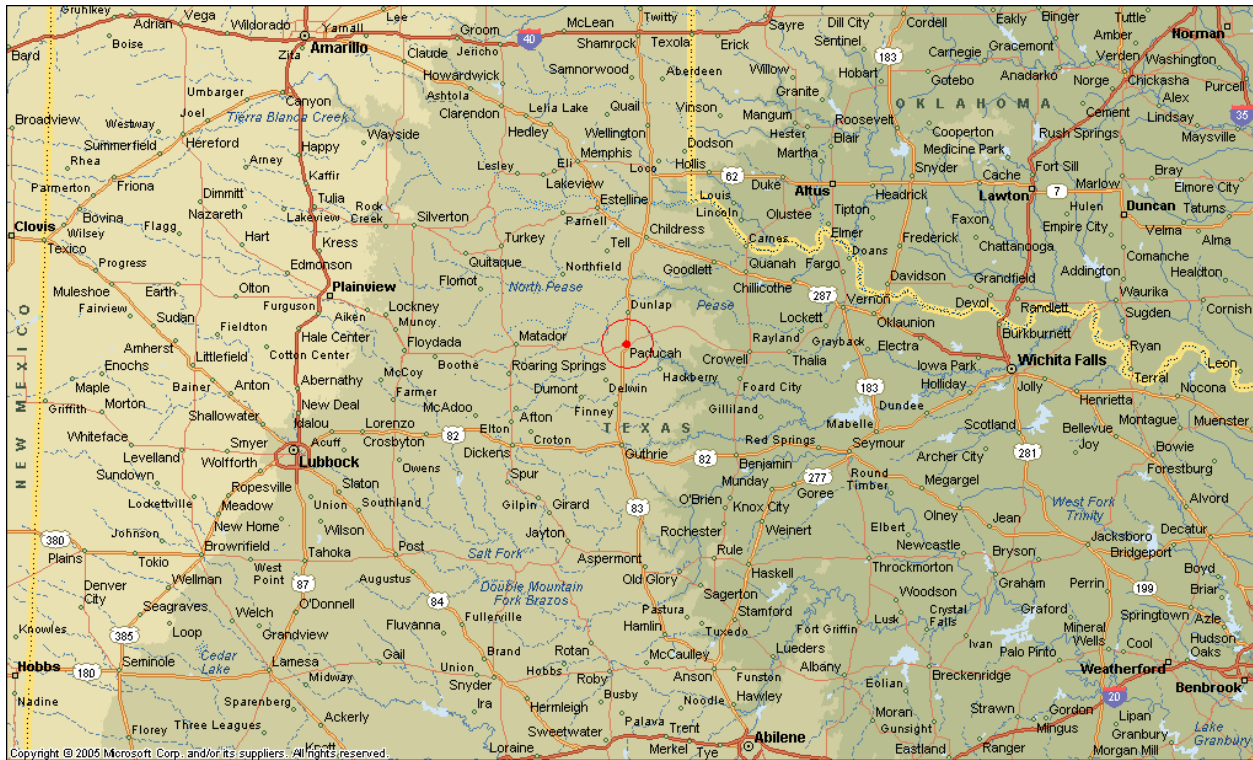
As of the 2000 census (City-Data.com) there were 650 households and 421 families residing in the town. The racial makeup of the town was 79.5% White, 11.21% African American, 7.61% from other races and 1.60% from two or more races. Hispanic or Latino of any race was 20.29% of the population. From the 650 households 28% had children under the age of 18 living with them, 49.7% were married couples living together 12.3% had a female householder with no husband present, 35.1% were non-families. 34% of all households were made up of individuals and 23.5% had someone living alone who was 65 years of age or older. According to City-Data.com, the population in July 2008 was 1257, however the mayor reports the most current population statistics as 1498. City-Data.com reports there were 567 males and 690 females. The population consist of 24% under the age of 18 years, 18.6% ages 18 to 24, 10.5% ages 25-44, 20.3% ages 45-64, and 26.6% were 65years of age or older. The median age is 45 years.

Education for the population 25 years and over: high school or higher, 61.5%, Bachelor's degree or higher, 12.8%, Graduate or professional degree, 3.4%. For the same population: unemployed 7% and mean travel time to work about 20 minutes. For population 15 years and over 16.8% never married, 60.1% now married, 2.2% separated, 14.9% widowed, and 6% divorced.

The estimated 2007 median income for a household in the town was \$32,549 and the per capita income \$21,277. The estimated median house value was \$46,647. The 2008 cost of living index for Paducah was 69.6 (very low, US average is 100). Industries providing employment in Paducah include: Educational, health and social services (21.7%), Agriculture, forestry, fishing and hunting, and mining (17.5%), Public administration (12.3%), Retail trade (10.9%). Several citizens are employed in the Childress area in retail, health services, food services, and/or the State Correctional Facility.

Paducah's local government consists of an elected mayor and 5-member city council elected at large by the citizens according to state election codes and general state laws. City employees along with the mayor see to the day-to-day operations of the city water/sewer/trash service, but other utilities are not city owned or contracted. The electric service company is at the citizen's choice, but service problems/repairs are taken care of locally by AEP. Greenlight Gas Co. provides natural gas service; with a local propane company seeing to propane needs of "country homes" and bar-b-cuer's grill tank refills. High-speed Internet service is available through Sudden link and Cap Rock Communications. Cable TV is available, but many use satellite services such as Dish Network and Direct TV. "Land line" phone service is available through Cap Rock Telephone Cooperative, but cellular services are available as well. There are 2 banks, a local newspaper, "The Post", a locally owned grocery store, convenience stores, automobile dealership, and lumberyard as well as other business located within Paducah's city limits. At the

First National Bank of Paducah, who has been doing business in Paducah for more than 100 years, you can have a free bag of freshly popped popcorn on Friday and your dog can have a doggy biscuit any day you are doing your banking at the drive through window.



<http://www.paducahtx.com>, <http://www.citydata.com/city/Paducah-Texas.html>,
<http://www.texasescapes.com>, and <http://www.google.com>, for city map

Texas Tax Structures-State and Local

Taxes per \$100 valuation

School Tax Maintenance and operation	1.04%
County Tax	
FM Rd. Tax	0.0704 %
Special Rd. Tax (Special Bridge)	0.0429%
General Fund	0.5553%
City Tax	0.8299%
Gateway (GWCD) Water District	0.01%
State Sales Tax	6.25%
City Sales Tax (2.0%)	
Economic Development Corp. (EDC)	
4A Use to create or retain primary jobs	0.25%
4B Promotion of the City	0.50%
Street Fund	0.25%
City	1.0%
Hotel/Motel Tax (2.0%)	
City County Heritage Museum	1.0%
Chamber of Commerce	1.0%

Exemptions on Property

School: VA exemptions from \$5,000-\$12,000 valuation depending on percentage of disability. This can be applied to any one piece of property owned Jan. 1.

Homestead exemptions of \$15,000 valuation. After 65 your homestead exemption received a “tax ceiling” freeze. If you are 65 or older or disabled you qualify for another \$10,000 exemption.

If you purchase another home in Texas, you may transfer the percentage of school tax paid based on your former home’s aged 65 or older school “tax ceiling” to your new home.

County: VA exemptions from \$5,000-\$12,000 valuation depending on percentage of disability. This can be applied to any one piece of property owned Jan. 1.

Farm to Market Road Tax exemption \$3,000 valuation.

Homestead exemptions for up to 20% of your home’s value with a minimum of \$5,000. Even though there is not the Homestead exemption for 65 year old or older as authorized by the Texas State Constitution, all age groups receive the above exemptions which when added together usually is at or more than the \$ 15,000 valuation exemption that the 65 year old or older would receive.

City: VA exemptions from \$5,000-\$12,000 valuation depending on percentage of disability. This can be applied to any one piece of property owned Jan. 1.

Gateway Water District (GWD): VA exemptions from \$5,000-\$12,000 valuation depending on percentage of disability. This can be applied to any one piece of property owned Jan. 1.

Local Housing Availability, Opportunity and Cost

Paducah has homes that vary in size, value and price range. At the present time most of the homes in Paducah were constructed prior to 1990, but there are several homes that have been constructed in the county since that time. There is at least one house that was built in Paducah over 100 years ago and it has a historical marker at its location. Construction companies and/or individuals whom can do construction from the ground to a turnkey home on your lot, or just make repairs, remodel, and restore an existing home are available in Paducah.

The total population of Paducah is approximately 1500 with 820 housing units. There is about 79% occupancy (US Census Bureau, American FactFinder), but “hunters” who come to Paducah for the wildlife hunting opportunities for which Cottle County is well known, own or rent several of Paducah’s homes. According to www.factfinder.census.gov the owner occupied housing rate is 72.9%, with renter-occupied rate being 27.1%. 468 homes are owner occupied and 182 renter-occupied. The percentage of the population that is renters is 28%, with the state average being 36% (City-Dat.com). Most households in Paducah average 2-3 persons.

Presently there are approximately 15 homes, mostly 2 bedroom, 1 bath that are for sale, but not all are being actively advertised. There are other homes that vary in size and price range that are available for sell and a few for rent and numerous building sites and/or “fixer uppers”. These, too, range in price and value. The city of Paducah Taxing Unit has almost 100 parcels that are listed as City of Paducah taxing unit owned, most being vacant lots (single 50 x140 ft and multiple lots of 2-6). Some are adjoining another parcel either on the side or back. Some do have improvements, and range in price. Homes in Paducah range in value of less than \$10,000 to over \$100,000. The median number of rooms in houses in Paducah is 5.3 with the state average 5.8. The mean value (according to City-Data.com) is \$56,341 with the state mean value being \$120,900. The average income in Paducah is \$32,549 compared to the state average of \$47,548. The cost of living however, is 30% lower than the US average (City-Data.com). The largest percentage of the homes’ values falls in the \$25,000-70,000 range (City-Date.com). An example of a “home for sale ad” in the local paper is “3 bedroom, 2 bath, brick home, large fenced back yard built in 1973, appraised at \$62,640.”

Apartments are available at a daily to monthly rate from the Cottle Inn, Townhouse Inn, and the Hunter’s Lodge. These range in size from one room, one bed/kitchenette to 2 bedrooms, with a basement and kitchen/living space. The cost also varies from less than \$50/day to \$500/month. The Paducah Housing Authority handles the remainder of apartment rentals available in Paducah. The rent paid in 2007 ranged from \$0-over \$500/month, with most being \$300 or less. The Assisted Living apartments are under auspice of the Paducah Housing Authority. HUD and Rural Development have a total of 92 units that are income-based rentals, some being handicap accessible. There are two RV parks available in Paducah for those who spend much of their time between the warm southern parts of Texas and the mountain of Colorado. Paducah is a great spot for the in between times when far south is too hot, but Colorado is still too cold.

The Paducah Nursing Center is a 40-bed facility with a beauty shop, and speech and physical therapy available. The Sharps Line Transportation provides transportation for those who qualify

for services to their medical appointments, and other needs to the surrounding areas including Amarillo, Lubbock, Plainview, Abilene, Wichita Falls and Altus, Ok. They have transported as far as Dallas/Ft. Worth. They also transport paying clients on an availability basis at this time. There is a possibility that their services will be expanded in the near future to include trips for shopping in Childress on a weekly basis as well as other transportation needs when they receive their grant. People volunteer to take friends and neighbors to appointments as needed. Church groups have services for those in need.

TX Dot has completed a project to make all major intersections and sidewalk crossings along Highways 70 and 83 and the crossing around the courthouse square wheelchair accessible.

Personal Safety, Security and Crime Statistics

Paducah can boast as being a city with a low crime rate that is below the state average. According to Sperling's Best Places, crime in 2007 was a total of 32 for the county. Violent crimes on a scale of 1 (low)-10 (high) had Paducah at 2. Property crime was rated at 3, equal to the US average. The crime rate of 2007 was 0 murders, rapes, robbery assaults, and 13 burglaries, 3 thefts, 2 auto thefts with the crime index of 92.5 compared to the US average of 320.9 (City-Data.com). When compared to other area cities of varying sizes the crime index for 2007 (the lower the number the better) was: Abilene 577, Amarillo 980, Lubbock 913, Tulia 322, Childress 392, Crowell 95, Paducah 0 (MelissaData.com). State crime rate is 608 per Mellissadata.com. According to neighborhoodscout.com property crime in Paducah was 7.98/1000 persons compared to 47.49 /1000 persons in the state. Violent crime was 0.66/1000person in Paducah compared to 5.81/1000 persons for the state. The site rated Paducah at 75 (100 being safest).

Paducah has a County Sheriff and one deputy, and the Department of Public Safety having 2 officers. The city of Paducah has a Chief of police and a police deputy. The Texas Rangers have an office in Childress that is 30 minutes to the north of Paducah.

Paducah has a Volunteer Fire Department consisting of 18 members and 2 junior explorers. (These are high school students ages 16-18 who have an interest in a fire-fighting career). The volunteers cover the entire Cottle County area consisting of 904 sq. miles. The Paducah Volunteer Fire Department consists of 2 stations. The central station houses 2 engine companies and rescue, EMS, and the 911-operation center. The other station (#2) houses wild fire fighting equipment. The department has 3 engines, 2 command units, 1 being a 4x4 used mostly in rough terrain, wild land fires and search and rescue missions, where the other being a car used in emergency management and travel to training, local activities, etc. for the department. The department also has a rescue unit that is fully equipped and set up much like an ambulance with extra supplies for additional resources, and has specialized equipment for lifting patients. This is essentially like having an additional ambulance for the county, but is limited by law as to how it can be used to transfer patients. The department also has a support rehab unit that carries water, gator aid, tents and equipment for search and rescue or in times that the fire fighters are working for an extended amount of time in the field. The Hazmat Decon Unit carries air supplies to re-supply the air bottles when the fire fighters are in a situation requiring air tanks. This way the fire fighter does not need to return to the Fire Station to re-supply the tanks. In addition to these units, the Paducah Volunteer Fire Department has a Fast Attack Unit which is a small brush unit that is foam capable, 2 five ton 6x6 brush trucks that are used for wild fire, a 5000 gallon water tender used to transport water to land fires, a 5000 gallon tractor trailer unit to transport water, a light tower/generator/trailer that has a generator with a telescoping light reaching 40 foot in height, a 50 KW generator /trailer, and is getting a 85 KW generator/trailer both to support and to supply infrastructure. Should the community lose power for an extended amount of time these generators could keep vital activities up and running. Much of this equipment and the radio/communication equipment have been purchased through 100% grant monies from homeland security.

Paducah also has a group of volunteers called CERT (Community Emergency Response Team). They assist the fire fighters in activities such as bringing in supplies, working traffic control, and search and rescue missions. They must go through 20 +-hour training and then are assigned equipment and begin working.

Presently Paducah has 2 emergency notification sirens such as used in case of a tornado warning, but will be getting 3 more this year and 2 the following year to be installed in various locations throughout the city. These 7 will give Paducah a much better notification coverage. Paducah **is** a “Disaster Ready City”. The emergency crews have a plan in place, back up generators ready, and the storm shelter is available in the basement of the courthouse that is open when weather threatens.

The 911 center is a 24-7 operation for the fire, police, EMS, sheriff department and serves as the public works department on weekends and holidays. It is staffed with 5 dispatchers. The emergency or 911 calls go out to the EMT’s from this center. There are 3 paid ambulance/medical personnel. They are all either Emergency Medical Technician (EMT) Basics or Emergency Care Attendants (ECA). There is a part time contracted EMT/ECA and 3 volunteer personnel. There are a total of 7 first responders with the fire department 4 being Basic and 3 ECA. The Economic Development Council is paying the schooling expenses for one of our residents to be a certified Paramedic. The EDC has also been seeking up to 2 individuals to attend school for certification/licenses for Asbestos identification. There has been interest expressed by a few in that project.

Employment Opportunities

The most common occupations for males in Paducah are farming, law enforcement, drivers, mechanics, construction, and other management occupations except farming occupations. For females the most common occupations are medical/nursing, secretary/administration assistant, teachers, food services, maintenance, law enforcement and other office work. There is a Texas Work Force office in Childress and Vernon. Vernon's office had a representative who comes to Paducah on a regular basis.

According to Sites on Texas, reports from the Texas Workforce, there are 353 work establishments in Cottle and Childress Counties. There is 78.5% of the work force working in county with 2.5% working at home. Most workers drive to their work place, 74% driving alone, and 20% car-pooling. Most drive less than 15 minutes. (City-Data.com). The unemployment rate in 2008 was 5% compared to 8% for the state. (SOCRATES).

The employment opportunities in Paducah are mostly in the fields of education, health care/services, food services, sales and trade. The public school system is the largest employer in Paducah. There is a locally owned grocery store and a car dealership that offer employment in those related fields. The nursing center and the rural health clinic employ nurses, nurses' aids, and a physician's assistant, as well as office staff and supervisors. The retail establishments and food services in town are also major places of employment. Since Paducah is the county seat for Cottle County there are several residents who are county employees. The Roach Unit, a state correctional facility, is located in Childress a city with a population of 6,631, thirty miles away, where several are employed not only as guards and office/administration staff, but also as educators in the school system. There are several other opportunities in Childress and surrounding areas since there are hospitals and medical facilities, motels, restaurants, county offices, and retail establishments including Wal-Mart within 30 minutes drive. GP Gypsum Corp. is located in Quanah. There are cotton gins and compresses in most area towns. Tyson's Food, North Texas State Hospital, Vernon College, 4 Banks, and Vernon ISD are located in Vernon an hour east. Within one hour drive are 2 colleges and many other employment opportunities both full and part time. The average income in Paducah is \$32,549 compared to the state average of \$47,548. The cost of living however, is 30% lower than the US average (City-Data.com). Housing cost and taxes are also lower than the state average.

There are opportunities for semi and fully retired persons wanting to do part time employment in such fields as building trades specializing in plumbing and electrical repairs, tile and bathroom remodeling. Attorneys who still want to have a part time practice or build a practice would have opportunity to do so in Paducah. Since there are no dentists located in Paducah, nor physicians living in Paducah, this could be an opportunity for some one looking for small community living to live and work in one of the area hospitals or clinics or set up their own practice.

Volunteer opportunities are available in the area especially as a CASA (Court Appointed Special Advocate), CERT (Community Emergency Response Team), in church work, on city committees (Friends of the Community, Chamber of Commerce, Cottle County Leadership Forum, Economic Development Board, etc), at the nursing home helping in the beauty shop or just doing activities in the home with the residents, working in 4-H, and with boy and girl scouts.

Volunteers also are project show judges, work in civic and service clubs, tutor and work with the school children as mentors. Volunteer opportunities are also available at the public library, Dunbar activity center, the museum, The American Cancer Society (a well-established chapter in Childress), and the Matador Wildlife and Recreation area. The Paducah Fire Department is an all volunteer, and anyone wanting to help would be considered for a position in the department.

Paducah is the perfect location for entrepreneurs. The city is often referred to as the "Crossroads of America" because U.S. Highways 70 and 83, which run from border to border and coast to coast intersect here. These highways provide transportation of products via Federal Express, UPS and DHL on a daily basis. Also trucking companies can easily pick up and deliver from this location. The low cost of living combined with the cities desire for new business make Paducah a great choice for retired people wanting to continue working in their own businesses. There are several buildings available on the downtown square that would make ideal places to open up "shop" for retirees to bring their talents either to begin a new business, or bring with them an established full or part time one.

Health Services

Paducah, like many other small towns who once had a vibrant hospital with a few GP's, now has local medical services available through Paducah Rural Health Clinic served by Hardeman County Hospital. There are local home health care services located in surrounding counties and Lubbock. Paducah has 24-hour EMT/ambulance service. Care flight is available when needed. Should one need to see a specialist or require care through a hospital stay, there are many options all less than an hour's drive including county and regional hospitals, speech, occupational, and physical therapy, orthopedics, neurosurgery, gastroenterology, ophthalmology, mammogram services, MRI/CAT scans, dialysis, cardiac rehab, social services with trained social workers, drug treatment centers, and Hospice.

Paducah's clinic offers service one would normally expect in a small community for their routine medical care visits. Two RN's take care of the patients visiting the clinic, as does the Physician Assistant who is at the clinic during regular office hours. Hardeman County Hospital is the administrator of health services in Paducah has one physician who comes at least once a week. Also available are physical therapy, anodyne therapy and home health services. Accolade Home Care comes to Paducah Community Center once a month and offers free health screening for high blood pressure, diabetes, and high cholesterol, as does Hardeman County Hospital, several times a year through civic organizations. Home health care centers (at least 8 with in 1 hour of Paducah) offer rehab service, assistance in daily living activities, home training and teaching, and skilled nursing staff, and accept Medicare, Medicaid, private insurance and private payment. Paducah has 2 Licensed Massage Therapist offering services to the citizens locally.

Childress Regional Medical Center (CRMC), 30 minutes away, the closest 24 hour health service center, encompasses a full service acute care hospital, primary care clinic, and diversified outpatient therapies and services. Within 45 minutes is the Hardeman General Hospital, which also is an acute care hospital. In 2006, Childress Regional Medical Center was selected as one of the Top 100 hospitals in the United States, a selection based on the quality of care provided, patient satisfaction scores, and facility growth. In 2007, Childress Regional Medical Center was honored with the Texas Governor's Award of Excellence. The hospital has been in continuous operation since 1970.

Fox Rural Health Clinic, next to the CRMC, a 30,000 sq. ft. primary care clinic is staffed with 8 local family practice physicians, and 4 family nurse practitioners. The clinic is open 7 days a week and offers evening appointments twice a week. Specialty care offered in Childress includes urology, orthopedics, ophthalmology, and neurosurgery. In addition, a board-certified General Surgeon offers a weekly clinic and surgical care.

Services offered at Childress Regional Medical Center include: general health and medical care, swing bed care (skilled nursing), rural health clinic, acute care hospitalization, full service radiology, respiratory therapy, home health, physical therapy, Level IV Trauma Center, Hospice, outpatient dialysis care, birthing center, surgery, hydrotherapy services, in house MRI, nuclear medicine, laboratory, mammography, MICU ambulance service, and outpatient surgical services. The hospital has on ground, a jet, 24-7, for emergency medical transfer to area medical centers.

A certified EMT, Paramedic, and/or other trained professionals travel with the patient aboard the plane to monitor and give needed attention.

Other area hospital:

Hardeman County Memorial Hospital, Quanah, TX, 45 minutes northwest, is designated as a critical access licensed general acute care facility and designated a Trauma Level 4 facility. The hospital offers rehabilitation service, home health care, swing-bed program, laboratory, nutritional counseling and indigent pharmaceutical care services. Hardeman County Hospital's sleep lab's goal is accurate diagnosis of obstructive sleep apnea provided in a hotel room like setting using the latest technology available. The clinic services next to the hospital provide primary care, geriatric psychiatric, general surgery, school physicals, podiatry, physical therapy, first steps program, bone density studies, mobile MRI, massage therapy, occupational therapy, speech therapy, etc

Jackson County Hospital, Altus OK one of the finest nearby hospitals and medical facilities one will find anywhere. They have a brand new large Heart Center, and Cancer Center, both with specialists and surgeons coming from Oklahoma City on a regular basis, to perform surgeries, consultations and treatments. A number of the physicians and surgeons who practice at Jackson County Hospital have their own clinics in Altus, and make regular visits to the Childress hospital as well, to operate or consult especially in the fields of urology, orthopedics, and general surgery including colonoscopy.

Wilbarger General Hospital, Vernon, TX, 60 minutes east, is Level IV certified facility. Services offered include: general medical, family practice, pediatrics, emergency room, mammography, MRI/CT scans, ultrasound, alternative care/depression, pathology, rehabilitation, home health care, radiology, bone density/DEXA, echo, nuclear medicine, dialysis center, and outpatient surgery. Specialist who comes weekly from Wichita Falls to the clinic located near the hospital to see patients.

Collingsworth General Hospital, Wellington, Texas, 30 miles north of Childress is a certified Critical Access Hospital.

Stonewall Memorial Hospital, Aspermont, TX, and 60 miles south.

Mental Health Services are available through Hardeman County Memorial Hospital, and Helen Farabee Regional MHMR in Childress, Quanah and Vernon. Paducah has a MHMR outreach center through the Department of Health and Human Service office.

There are 2 chiropractic clinics located in Childress. There are others available in Altus and Magnum, OK, and Vernon, TX just a short drive from Paducah.

There are 4 pharmacies in the area that residents use. Since the closest pharmacy services are in either Crowell or Childress, many residents of Paducah use mail order pharmacy services usually offered through their insurance coverage. According to the October 2007 report from the Texas Department of State Health Services, there were 7 **pharmacists** in this area, which is a ratio of 1,385.9 persons for each pharmacist. Texas has 18,138 pharmacists statewide or a ratio of 1,308.2 persons for each pharmacist in the area. <http://www.dshs.state.tx.us>

Childress has 2 dentists; a third is due in 2010, and one orthodontist. There are 2 dentists in Quanah. Some residents go to Vernon, 60 minutes away, or Altus, Ok and Plainview, 90 minutes

away. This is the same for eye doctor appointment. There is an ophthalmologist who comes to Childress to see patients and does eye surgery, (i.e. cataract surgery), in Childress, and 2 OD's who offer full service optical care including laser vision consultation. There are numerous eye specialists and dental care professional less than 2 hours away located in the area's larger cities. The Texas Department of State Health Services information for October 2007 reports that there were 3 **dentists** in the area, with a ratio of 3,233.7 persons for each dentist in the area. The ratio of dentists per 100,000 residents was 30.9. By comparison, there was a statewide ratio of 42.8 dentists per 100,000 residents, <http://www.dshs.state.tx.us>

Within a 2 hours drive are specialty clinics such as cardiovascular hospitals, rehabilitation centers, women's health hospitals, neuroscience, cancer centers, acute and chronic pain management centers, and other services available equal to those found in Dallas/Ft Worth, San Antonio, and Houston areas. Military bases are located in Wichita Falls, TX Abilene, TX and Altus OK, which offer medical care, eye care, and pharmacy services. The services vary at each base. A VA hospital is located in Amarillo, and Fox Rural Health Clinic in Childress offers an area outpatient VA clinic. Childress Regional Hospital has on ground 24-7, a jet to transport the patients to Lubbock, Amarillo, Wichita Falls or other hospital locations as needed.

Paducah has a 40 bed nursing center with a beauty shop, activities directed by their activities director, and speech and physical therapy services. Childress also has 2 retirement homes for people that can no longer live independently. All three of these homes offer custodial and skilled nursing care. These facilities are staffed with qualified nurses. All of these facilities offer both private and shared rooms, nutritional and special dietary meals, and housekeeping services. These facilities offer medication administration by licensed professionals. Childress also offers assisted living at Cottage Village that provides a homelike atmosphere for those that just need a little help to maintain their independence. Cottage Village offers meals and housekeeping services as well as regular planned activities. There are 1-room efficiency apartments located inside the community building and larger, freestanding apartments adjacent to the main building. Staff members are onsite 24/7 to assist residents as needed. Matador, 30 minutes west, offers a state of the art care center/assisted living center. The homelike atmosphere is warm, relaxed and the ambience embraces the small town values. The center offers care for the transitioning patient from hospital to home, those needing intensive rehabilitation or skilled nursing services, to those who need just a small amount of assistance. The Wellington Care Center has a special unit to care for Alzheimer's patients. Hospice care is offered through Childress Regional Medical Center, centers in Lubbock, Amarillo, Abilene, and Wichita Falls.

Sharp Lines Transportation offers transportation services in Paducah to those who qualify, as well as paying clients, to the facilities in Amarillo, Lubbock, Plainview, Abilene, Wichita Falls, and as far away as Dallas/Ft. Worth. Hopefully more services through Sharps Line will be available soon that will include transportation to Childress for shopping on a regular schedule. Since Paducah is a caring community, friends, neighbors, and extended family members also see that those who need help in transportation to appointments for health care visits are taken. Some times friends in Paducah will make routine appointments on the same day and go together and enjoy the time either shopping or attending to other business when their appointments are further away than Childress.

Health Practitioners - According to the Texas Department of State Health Services October 2007 report, there were 17 direct patient care and primary care **physicians** who practiced in the Cottle and Childress County region. The ratio of total persons to each physician in the area was 570.6 residents per each physician. This compares to a statewide ratio of 460.5 persons for each physician in Texas. <http://www.dshs.state.tx.us>

The study area had a total of 48 **registered nurses** (RN) working in the Cottle and Childress County area, representing a ratio of 202.1 persons for each RN in the area. The statewide ratio was 152.2 persons for each RN in the state. <http://www.dshs.state.tx.us>

The number of **licensed vocational nurses** (LVN) who practiced in the area was 78 representing a ratio of 124.4 persons per each LVN in the area. This compared to 363.8 persons per each LVN statewide. See <http://www.dshs.state.tx.us> for a wider variety of Health Professionals and related information.

The Texas Department of State Health Services information for October 2007 shows that for the area there were 1 **occupational therapists**; a ratio of 9,701.0 persons for each occupational therapist. The statewide ratio was 11,072.6 persons for each occupational therapist, with a total of 2,143 occupational therapists statewide. <http://www.dshs.state.tx.us>

According to data from the Texas Department of State Health Services for October 2007, there were 27 licensed **Emergency Medical Technicians**, or EMT's, for the area; a ratio of 278.3 licensed EMT's per 100,000 residents. The statewide ratio was 218.0 EMT's per 100,000 residents, with a total of 51,718 EMT's statewide. <http://www.dshs.state.tx.us>

Emergency Medical Services

The 911 center is a 24-7 operation for the fire, police, EMS, sheriff department and serves as the public works department on weekends and holidays. It is staffed with 5 dispatchers. The emergency or 911 calls go out to the EMT's from this center. There are 3 paid ambulance/medical personnel that work the city of Paducah as well as Cottle County. They are either EMT (emergency medical technicians) Basics or ECA (emergency care attendant). There is a part time contracted EMT/ECA and 3 volunteer personnel. There are a total of 7 first responders with the fire department 4 being Basic and 3 ECA.

The EMT is notified through the 911-system dispatcher when the 911 call request that service. Many times the EMT may be on the scene, making an evaluation of the situation and rendering emergency aid, before the ambulance arrives. (Each month's EMT report to the Commissioner's Court typical statistics are: average response time is 3 minutes for 15 calls.) After the EMT is on the scene, if the client needs to be transported for further medical attention, the closest 24-hour care facility is Childress Regional Medical Center. The patient can be transported to Hardeman County Memorial Hospital the next closest or any other hospital if they request. Should the client need more critical care than Childress can provide, Childress Regional has a jet aircraft on ground 24-7 that can fly to any of the other Regional Medical facilities needed. Medical professionals travel with the patient monitoring the situation and administering whatever emergency care possible while in route. When necessary, Aero Care can be called to Paducah and arrive from Lubbock within 30-40 minutes depending on the weather conditions. Aero Care or any other helicopter air flight can come into Paducah or any area, even remote, if flat enough due to the GPS system used by the helicopter and Paducah's ambulances. The Paducah Fire Department coordinates the landing zones for these landings. First Responder may also be used for Emergency Medical services, as they are the Volunteer EMT's. The client/patient can then be transported to any area/regional medical facility necessary. (Lubbock, Wichita Falls, Abilene, Amarillo, etc.)

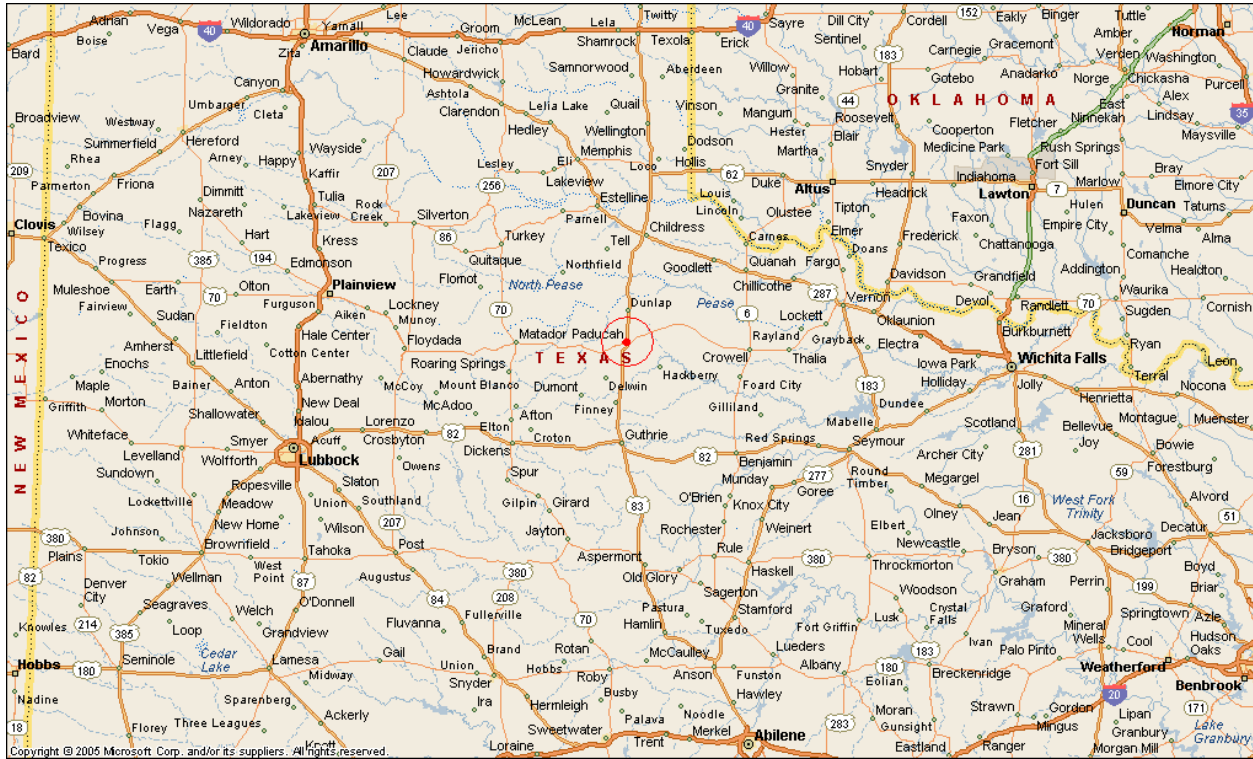
When a Paducah resident needs emergency medical services, but does not believe an ambulance is necessary, a visit to the Paducah Rural Health Clinic would be the first option, however it is not a 24-hour clinic. Childress Regional is 30 minutes away and Hardeman County Memorial Hospital is 45 minutes would be the next closest facility.

Paducah's EDC (Economic Development Corp.) is currently paying for a student to study to be a paramedic. It also is working on other projects in which it will pay for the school cost in areas that will assist the city in health issue such as asbestos removal and clean up in any city locations.

Paducah has a Volunteer Fire Department consisting of 18 members and 2 junior explorers. (These are high school students ages 16-18 who have an interest in a fire-fighting career). The volunteers cover the entire Cottle County area consisting of 904 sq. miles. The Paducah Volunteer Fire Department consists of 2 stations. The central station houses 2 engine companies and rescue, EMS, and the 911-operation center. The other station (#2) houses wild fire fighting equipment. The department has 3 engines, 2 command units, 1 being a 4x4 used mostly in rough terrain, wild land fires and search and rescue missions, where the other being a car used in

emergency management and travel to training, local activities, etc. for the department. The department also has a rescue unit that is fully equipped and set up much like an ambulance with extra supplies for additional resources, and has specialized equipment for lifting patients. This is essentially like having an additional ambulance for the county, but is limited by law as to how it can be used to transfer patients. The department also has a support rehab unit that carries water, gator aid, tents and equipment for search and rescue or in times that the fire fighters are working for an extended amount of time in the field. The Hazmat Decon Unit carries air supplies to re-supply the air bottles when the fire fighters are in a situation requiring air tanks. This way the fire fighter does not need to return to the Fire Station to re-supply the tanks. In addition to these units, the Paducah Volunteer Fire Department has a Fast Attack Unit which is a small brush unit that is foam capable, 2 five ton 6x6 brush trucks that are used for wild fire, a 5000 gallon water tender used to transport water to land fires, a 5000 gallon tractor trailer unit to transport water, a light tower/generator/trailer that has a generator with a telescoping light reaching 40 foot in height, a 50 KW generator /trailer, and is getting a 85 KW generator/trailer both to support and to supply infrastructure. Should the community lose power for an extended amount of time these generators could keep vital activities up and running. Much of this equipment and the radio/communication equipment have been purchased through 100% grant monies from homeland security.

Public Transportation and Major Highways



Paducah is sometimes referred to as the “*Crossroads of America*” because U.S. Highways 70 and 83, which run border to border and coast to coast intersect here. Thirty minutes North on US 83 is Childress and US Highway 287 that leads to Amarillo to the west and Wichita Falls to the East. In Amarillo you find Interstate 40, or go on 83 North through Childress to Shamrock, TX arriving at Interstate 40. South on US 83 about 2 hours is Abilene and Interstate 20 going to El Paso to the west and Dallas/Forth Worth to the East. Travel east on US 70 you will find Vernon and Wichita Falls and to the west is Plainview and Interstate 27 running north and south. Located within 2 hours drive or less from Paducah are the cities of Amarillo/ Canyon, Lubbock, Plainview, Abilene, Vernon, Wichita Falls, TX and Altus, OK. About four hours drive you are in the Dallas/Forth Worth area.

Paducah host Dan E Richard Municipal Airport, approximately one mile from the center of town. It is situated on 35 acres and is owned by Paducah and Cottle County. The runway is 3186 ft. in length and 52 ft wide with an asphalt or bituminous concrete surface reported in good condition. The runway weight bearing capacity is single wheel 8,500 lbs.

Childress Municipal Airport (30 miles away) is located approximately 4 miles from the central business district. It covers 2500 areas and is owned by the city of Childress. The runways weight bearing capacity is single wheel 21,000 lbs.

There are commercial flights available at the regional airports located in Amarillo, Lubbock, Wichita Falls, and Abilene all easy to access and within 2-hour drive. All have connections in

DFW going east, but western connections vary depending on western destination and airport of departure. All of these airports are services by American Airlines/American Eagle and/or Southwestern as well as others.

Sharp Lines Transportation offers transportation services, to those who qualify, as well as paying clients, to the facilities in Amarillo, Lubbock, Plainview, Abilene, Wichita Falls, and as far away as Dallas/Ft. Worth. Neighbors, church members, and friends regularly transport each other to doctor, dentist, and eye appointments. The community members are considerate and care for each other's welfare.

UPS, DHL, and FEDEX have pickup service in town daily, and deliver to home locations. There is a Pro Pack and Mail in Childress where there are FedEx, and UPS services. Greyhound bus service for package and tickets is located in Childress at Billy's Truck Service. It comes from Amarillo to Dallas and from Dallas to Amarillo twice daily. Amtrak station is located in Ft Worth. (Go to Greyhound.com: locations: Childress and Amtrak.com for more information) U-Haul service is located at the Crossroad Convenience Store in Paducah.

Continuing Education

There is ample opportunity for the residents of Paducah to further their education, be it formally or just learning about the history of the area. Paducah has 2 museums, the City-County Heritage Museum, or as some locals refer to it, the Cottle County Museum, and the Cottle County Law Enforcement Museum. The city has a library located in the basement of the Cottle County Courthouse. The Matador Wildlife Management area is located northwest of town on FM 3256 and the Three Rivers Foundation has a campus located east of town. One can work on course work via the internet with area universities or any offering classes, while continuing education classes are offered non credit as well as for college credits as close as Childress (30 minutes north) through Clarendon College.

The City-County Heritage Museum Board, representing a cross-section of the Cottle County citizens, was established in 1965 to preserve the visual history in the form of documents, photos, memorabilia and items used in daily activities depicting life from pioneer days until the 1970's. The museum, in conjunction with the city-county library housed in the basement of the Cottle County Courthouse, outgrew its exhibit area. The museum was moved to the present location, the 1900's Quanah, Acme, Pacific Railroad Depot in 1983. The depot had been deeded to the city of Paducah and Cottle County after the train ceased to run along those rail lines. Luther Moss, a then Cottle County Commissioner, was instrumental in obtaining the depot for the museum's use.



Paducah's City-County Heritage Museum located in the 1900's Quanah, Acme, Pacific Railroad Depot

The City-County Heritage Museum Board mission is to preserve the visual history of Cottle County's heritage by housing and displaying artifacts and treasured belongings of its citizens from the pioneer days until the recent past. The museum is the caretakers of many old documents, photos, household furnishings, as well as other belongings and personal items of the county's citizens including Congressmen Hubert A. Lee and William Heatley.

After acquiring the depot building and adjacent property the depot was converted into the now City-County Heritage Museum. The museum is the home for photos of several of the county's WWI and WWII veterans and citizen of the county, Congressman Heatley's personal desk and

several other of his personal items, as well as a 200 + year doll belonging to a pioneer's child. The First Baptist Church's first organ, marriage licenses, hand written county court documents/books, information and documents concerning Cottle county's first courthouse, as well as trophies, pictures and yearbooks from several of the more than 30 schools that have existed in Cottle County are also housed in the depot museum. The board was also able to depict daily living and home activities by using authentic furnishings for parlors, kitchens, dining area, and bedrooms including a cradle, and baby articles. There are clothing items, quilts, other linens, and a laundry area displaying a ringer washing machine, tubs and a rub board. The City-County Heritage Museum Board acquired a restored stagecoach and Paducah's original 1936 fire engine, of which only 5 were produced. Both are now housed in a new storage facility at the depot site which was funded by the museum's own funds. The large exhibits such as a windmill, and a large stone marker from one of the county schools are located on the fenced property of the museum.



The Law Enforcement Museum housed in the Red brick Jailhouse is a project in work

The Cottle County Law Enforcement Museum is located in the 1921 red brick jail building. This building was used as the Paducah/Cottle County jail until 1998. The museum is a project in the works, but is open for tours during events such as the Old Settlers' Reunion and Rodeo, and Pioneer Days both held in the spring each year. In the future the artifacts and memorabilia depicting the jail's history will be ready for display and the museum will then be open during other city events or festivals, and on request or appointment.

The City Library located in the Cottle County Courthouse basement is open daily Monday thru Friday from 10 am until 5 pm. It houses over 14,300 books, 330 audio materials, 370 video materials and 20 serial subscriptions. The library has a video/DVD check out/loan program with recent movie releases. The Paducah library has five computers with high speed Internet access for the citizen's use. "The Friends of the Library" organization was responsible for the grant that made the purchase of these computers possible, as well as other needed items such as additional shelving, lighting, and computer updates. The "friends" also are responsible for the children's summer reading program, purchase of a TV, carpeting and getting the reference room established and operational. The "friends" membership is open to anyone who wishes to support the library with yearly or lifetime memberships.

The Three Rivers Foundation for the Arts and Sciences has a campus located between Paducah and Crowell. The Comanche Springs Astronomy Campus sets on a gentle hill in ranch county making it a premier dark-sky site for star viewing. Sitting on a remote 50-acre campus, the staff and volunteer amateur astronomers use an array of sophisticated telescopes to showcase the science of astronomy. The public is welcomed to take part in a spectacular telescopic view of the dark and brilliant skies. The Foundation offers “Star Parties” for the public to come view the night sky and enjoy learning about our universe. The centerpiece of the campus is an observatory that houses a 15-inch D&G chromatic refractor. A roll-roof observatory shelters a 30 inch Obsession Dobsonian and a pair of Grant Fujinon binoculars, a Sayre Binoscope in a roll-away enclosure. A 10 foot dome and two 15 foot domes are clustered nearby, destined for robotic control to make them accessible to classrooms everywhere.

The Matador Wildlife Management Area is a 28,000-acre area on the Middle Pease and South Pease rivers north of Paducah. The area offers bird watching, nature study and photography opportunities as well as education for landowners concerning wildlife management. The Matador Wildlife Management Area (MWMA) is located in the central Rolling Plains of Cottle County, Texas. Using Pittman-Robertson funds, the 28,183-acre MWMA was purchased by the Texas Parks and Wildlife Department in 1959 for the purposes of wildlife research, wildlife management, and public use. With over 70 miles of road, some only usable with 4 wheel drive vehicles, the public can observe the sites of the preserve, or stop and hike the scenic areas. Habitat types include mesquite uplands, shinnery oak rangeland and gravelly hills consisting of red berry juniper and mesquite mix, and bottomland. Average annual rainfall is 22 inches, with the greatest precipitation normally occurring in May and June. Public use activities include hunting, fishing, hiking, bird watching, camping, horseback riding, nature study, and photography. All visitors must register upon arrival at the registration building (open 24 hours) and check out when leaving. Tours of the MWMA can be arranged for groups by contacting the Area Manager. Tours are not available during public hunts. Numerous wildlife species occur on the MWMA, including bobwhite quail, Rio Grande turkey, scissor-tailed flycatchers, Bullock's orioles, Mississippi kites, roadrunners, mourning doves, painted buntings, western diamondback rattlesnakes, western massasauga rattlesnakes, Texas horned lizards, ornate box turtles, mule and white-tailed deer, coyotes, bobcats, and feral hogs. Rare species sighted on the area include vermilion flycatchers, pyrrhuloxia, mountain lions, pronghorn, and javelina.

Students, teachers, and scientists use the MWMA for instructional, educational, and research purposes. There are opportunities for adults to volunteer to help youth learn gun safety, shooting of different guns in different types of situations and even hunt with a youth before the official hunting season opens.

Other opportunities for Continuing Education in Paducah include the Pioneer Days held in March. This festival has “booth” reenactments of pioneer day activities. There are demonstrations of games children and adults played, crafts, woodworking demonstrations and products for sale, leather goods, cowboy shootouts, horse breaking demonstrations, and brush arbor singing. Museum tours are given at both museums and sharing of information at all booths. Paducah has several active study clubs who have informative meetings each month for their members including visiting some of the area attractions listed in this section.

Some of the other opportunities for continuing education experiences found in the surrounding area: 1 hour or less drive from Paducah

CeeVee There is a historical marker located in CeeVee outlining the establishment and the Mill Iron Ranch operations.

Chalk Historical Marker, Chalk, tells about the time when Chalk was established as a city, when the post office, stores, school, and churches were built and the dates of when the city closed.

Chalk is one of the several little cities just outside Paducah that are not longer in existence

Childress County Heritage Museum—housed in old post office with a Spanish Colonial Architecture lobby houses Childress Army Airfield exhibits, Indian artifacts, theater memorabilia and school and period rooms.

Childress City Park (Fair Park) has a beautiful lake, picnic area, walking trails, swimming pool, tennis courts and a playground. There is a historical marker in the park for the Goodnight Trail, an extension of the famed Goodnight-Loving Trail over which herds of cattle trekked to market.

20th Century Veterans Memorial, Childress was erected and dedicated in Nov. 2005 includes all veterans who live or have lived in Childress and served in military service in the 20th century.

Depot Library/Museum, Crowell, is in the old Santa Fe Depot and houses the public library. The museum features local history and an extensive collection on Cynthia Ann Parker and other items dealing with Crowell's frontier history. There is also an exhibit in the Ford County Courthouse.

Firehall Museum, Crowell, is a museum exhibiting household, farm and ranch implements, and a detailed scale model of a country town in the early 1900s. There is an exhibit on Gen. George B McClellan's 1877 copper mine, including artifacts from his campsite. He was Commander-in-Chief of the Union Army for a time and the Democratic nominee opposing Abraham Lincoln in the 1864 presidential election. This museum is located in the old Firehall.

Motley County Historical Museum, Matador, is housed in the old Traweek Hospital built in 1928, by Dr. A.C. Traweek Sr., the first medical doctor in the county. Exhibits include collection of artifacts from early ranch and farm life in the county, exhibit rooms featuring early medical care, school items, Plains Indians and a miniature display of the city, as it existed from 1891-1910, and history of the Matador Land and Cattle Co.

Matador Ranch, Matador, which is owned and operated by The Matador Cattle Company, is a 130,000-acre working cattle ranch that covers parts of Motley, Floyd, Cottle, and Crosby and Dickens counties. Matador Ranch lies primarily on the Rolling Plains of Texas, although the western edge touches the Caprock or High Plains escarpment. Its terrain includes mesquite, cedar, rolling hills, rugged canyons and open pastures. The ranch supports more than 3,000 head of cattle, as well as Quarter horses and diverse wildlife. Cattle carry the flying V brand, while the horses are marked with a "50." Fred C. Koch acquired both brands, when his company purchased the ranch in 1953. Koch companies such as The Matador Cattle Company utilize a business philosophy, Market-Based Management®, which encourages employees to be principled entrepreneurs. The ranch's management goal is to improve the long-term health and productivity of its renewable natural resources to profitably sustain domestic livestock and wildlife. To achieve this, the ranch has implemented innovative water and grazing management practices. Much of the ranch lies above the Seymour Aquifer, whose spring water is pumped by windmill to manmade tanks. The Middle Pease and Tongue rivers cross the ranch, along with various wet-weather creeks; the Middle Pease feeds into the North Pease River, while the Tongue River empties into the South Pease River. Earthen tanks supplement the watering capacity for wildlife

and livestock. The ranch also has a pipeline system to move water to portions of the ranch. Precipitation, mostly rainfall during summer thunderstorms, is about 19 inches annually. Through the use of rest-rotational grazing systems, the ranch has worked to manage the soil and grasses, to ultimately increase the quality and quantity of forage produced

Other Major Ranches in the area include the **6666, the Triangles, the Pitchfork and Tongue River Ranches. The Waggoner Ranch** established in 1849 began in Wise County but gradually moved west. The W.T. Waggoner Estate consisting of approximately 520,000 acres is recognized as the largest ranch in Texas under one fence. Because of Paul Waggoner's love of ranch life and his desire to preserve the history of the early West, he built the Santa Rosa division just south of Vernon. It has become the headquarters for the quarter horse division of the W.T. Waggoner Estate and home of the legendary stallion Poco Bueno. The **Tongue River Ranch** will allow people to stay overnight to experience life on a ranch with prior arrangements when there is a room available. Inquires to what the **6666 Ranch** will offer would need to be made individually through the ranch headquarters.

Hollis, Floydada, Haskell are cities that have weekly livestock auctions where livestock is brought in and sold in auction.

Collingsworth County Museum and Art Center, Wellington, exhibits history of the area including mementos left behind by the criminal duo Bonnie and Clyde, a wide variety of unusual county artifacts from early highway survey equipment to a rare leather license plate.

Bob Wills Museum, Turkey, honor the man known as the King of Western Swing including memorabilia of the Texas Playboys and of Wills' career, fiddles, boots, hats, recordings, music and photos.

Historic Inn, Hotel Turkey, Turkey, was built in 1927 and is listed with the State and National Historic Registries. It is still run as a bed and breakfast, but still retains its 1927 décor.

Caprock Canyons State Park and Trailway, Quitaque, covers 13,906 acres in the canyons and colorful cliffs that is abundant in wildlife including African aoudad sheep, mule deer, and golden eagles. After 1874, Anglo settlement began, counties were organized, and ranches were established. Famed cattleman Charles Goodnight moved cattle into Palo Duro Canyon in 1876. In 1882, he bought vast areas of land for John G. Adair, who became owner of the noted J. A. Ranch. The land on which the park is located was included in the purchase. A railroad was built into this area in 1887. Theo Geisler, who died on August 15, 1969, acquired most of the land that now lies within park boundaries in 1936. The state purchased the land in 1975, and the park's Lake Theo was named after Geisler. Inside the state park grounds is the official Texas State Bison Herd.

Hardeman County Museum, and QA&P Railway Depot, Quanah, is housed in the 1891 county jail building. The upper floor cells were left intact. The museum features exhibits of history of Quanah and Hardeman County. The depot is an extension of the Jail Museum. It has historical exhibit and a Space Room furnished by NASA and the Smithsonian Institute the lower floor along with family heirlooms. The upper story is in the process of being restored with the addition of a Veterans Room.

The Downtown Medicine Mound Museum is located in the ghost town of Medicine Mound. On permanent display are over 200 pictures of area settlers, newspaper articles of interest, memorabilia, books, and Indian artifacts of the area.

Lockett has the District Three Office for the Texas AgriLife Extension. You can see what is being studied on the "farm" areas located there.

SW Lowe House, Clarendon is an elegant Queen Ann Victorian house in the 1904 landmark that reflects the ranching heritage of the area.

James Pinckney Rodgers Bird Sanctuary, Clarendon. Visitors can admire this shelter that provides habitat for migratory songbirds, resident quail, roadrunners, dove and flycatchers.

Saints Roost Museum, Clarendon, Housed in former Adair Hospital founded by Cornelia Adair in 1910 for local cowboys, the museum features heirlooms from area ranches, farms and businesses, as well as renovated railroad depot and a Red River War collection. Open during summer weekdays 2 -5 p.m.; Sun. 1-5 p.m. On Texas 70 south.

Donley County Courthouse, Clarendon, is the oldest courthouse in the Panhandle. It has recently undergone a \$4.2 million restoration.

Donley County Veteran's Memorial, Clarendon. The memorial honors those who have served Donley County. Any family can purchase a memorial brick to honor a loved one who served in the military.

Bar H Dude Ranch, Clarendon: From a hearty chuck-wagon breakfast to mesquite-grilled steaks at dinner, activities are tailored to suit your interests. Horseback riding, cattle drives, birding trails and viewing blinds, as well as bunkhouses and cabins for overnight stays available. Depending on season, guests can watch cowboys work cattle, mend fences and perform other ranch chores. Ranch is also a game preserve licensed by Texas Parks and Wildlife Department and a site on the Panhandle Plains Wildlife Trail. Bar H Maze on the farm open Sept. -Nov. and features three miles of trail in 10-acre cane maze; maze is "haunted" during Oct.

Hall County Museum, Memphis: Museum is housed in the old First National Bank Building. Exhibits include photographs of early Memphis street scenes and settlers. Other displays include a schoolroom with photos of school classes and old annuals; doctor certificates and tools of the trade; vintage furniture, paintings and other memorabilia.

Presbyterian Building, Memphis: Former Presbyterian Church built in 1911, features a state historical marker. It was designed after St. Peter's Basilica in Rome; all windows are European stained glass. Its organ, a two-manual Kilgen, was originally water powdered and later converted to electricity. It is one of only two left in the world. When the church disbanded, a non-profit Preservation Foundation was formed and took over the care and restoration of the building. The chamber of commerce can arrange a tour.

Scenic Drive, Memphis: Texas 256 west traverses rolling country often cut by tributaries of Prairie Dog Town Fork of Red River. It threads among the jumbled, broken remnants of the High Plains, and then ascends the Caprock in a spectacular drive amid colorful cliffs and canyons. Nearby Caprock Canyon State Park and home of historic J.A. Ranch bison herd.

Red River Valley Museum, Vernon, exhibits more than 140 mounts in the William A. Bond Game Trophy Room, archaeological exhibits, and Indian artifact. Also there is a history of ranching including work of sculptor Electra Waggoner Biggs. The Western Trail Heritage Center will be a 14, 000 sq. foot area that will preserve the history of the trail which will start with a replica of the original Doan's Picket House. Where visitors will hear stories of life in a cattle drive community, the birth of the cattle industry and the legend of the cowboy. There will be interactive displays and exhibits that will recreate a typical cattle drive town.

Historic Doan's Adobe House, Vernon formerly served as a trading post where the Western Trail crossed the river going north to cattle markets. This historic house is the oldest adobe building in the county.

Also in Vernon one will find *The Texaco Museums* dedicated to all things Texaco is located in one of Vernon's many historical buildings. *The Gulf Museum* features Gulf memorabilia and other interesting items with special focus on classical and vintage cars.

The JD&PA Railroad Museums featuring an extensive model railroad collection as well as railroad memorabilia.

Waggoner Ranch Headquarters, Vernon Headquarters for the W.T. Waggoner Estate operates one of the nation's largest ranches. More than 500,000 adjoining acres extend into six counties. The operation contrasts the old and the new, as it is not uncommon to witness a cowboy on horseback gesturing to a helicopter hovering overhead. Waggoner Ranch cowboys captured an unprecedented title by winning the Ranch Roundup Competition for three years in a row. Ranch Roundup is held every August in nearby Wichita Falls and features cowboys from the working ranches representing their brand by competing against other ranches.

The Santa Rosa Palomino Club, Vernon has been honored as the official "Ambassadors on Horseback" for the State of Texas, the outstanding riding club in America, and the National Drill Team Championship. The riders use precision horsemanship with matched palomino mounts, colorful attire and unparalleled esprit de corps to maintain its position year after year as one of the greatest non-professional riding groups ever assembled. Celebrating its 50th anniversary in 1999, the self-supporting group draws superlatives wherever it performs.

Santa Rosa Roundup, Vernon, the Santa Rosa Stud Farm provides facilities for one of the major rodeos in the nation. Annually, thousands thrill to the feats performed by top professional rodeo contestants. The 4-day event is held the third weekend in May, starting with a Rodeo Parade downtown on Wednesday afternoon. Rodeo performances are held nightly at 7:30 p.m.

Floyd County Museum, Floydada Artifacts on display suggest that Spanish explorer Coronado led his 1,000-person expedition through the area in 1541. A display features a chain mail glove, 16th century horseshoe nails and copper crossbow points found in nearby Blanco Canyon. Housed in a 1912 hardware and implement store, the museum also displays more recent artifacts—a rope-making machine, a chart used by a traveling professor to identify character traits and a Depression-era toy train made from tin cans and jar lids. Period furnishings, implements, store fixtures, photographs of early settlers and ranchers are also displayed. The adjacent Mary Lou Bollman History and Genealogy center attracts researcher from across the country.

Floyd County Veterans Memorial is located across from the Museum honoring the veterans from Floyd County in Floydada.

Punkin Day, Floydada, held each year in Floydada celebrated the "Pumpkin Festival Days". There are pumpkins of every description, fun activities and food. This is a time to learn more about Floyd County and the importance of pumpkins to their economy

Benjamin approximately 1 hour southeast visitors will find *Knox County Museum*: Barbed-wire collection and other relics from early settlers on view in county courthouse, which was built in 1936 to replace previous stone structure, built in 1888. New museum was recently constructed on U.S. 82 where 1920s home of country music star Ernest Tubb once stood.

Wyman Minzer Art Gallery where one can see many of Minzer's art pieces. Benjamin is the birthplace of this artist and information on his life is available.

Scenic Drive: Thirty-six mile loop northeast provides views of farm and ranch lands cut by South Wichita River breaks, where fantastic shapes in layers of multicolored soils can be seen. North on Texas 6 to F.M. 1756, east to F.M. 267, south to U.S. 82, then west back to Benjamin. A roadside park on U.S. 82 provides impressive views north toward South Wichita River and

south toward the Brazos River. Well-maintained park is at a point called “the narrows” on a ridgeline that separates the two major watersheds.

Knox County Veterans Memorial: Located at corner of U.S. 82 and Texas 6, impressive monument dedicated in 2000 honors all Knox County veterans from the Spanish-American War through current conflicts. 10 granite slabs listing all county veterans’ names flank center arch.

Cities within 2 hours or less of Paducah

Abilene 2 hours south on US Hwy 83

12th Armored Division Memorial Museum is dedicated to honoring the 12th Armored Division — based out of Camp Barkeley, near Abilene — that served during World War II. The “Hellcats” fought in the European Theatre, Germany, France and, finally, occupied Japan. Museum displays the Division’s historical collection, serves as a teaching museum for the study of World War II and its impact on the American people, and offers academic access to historical materials.

Dyess Air Force Base is home of the 7th Bomb Wing with two B-1B Lancer squadrons and the 317th Airlift Group with two C-130 squadrons. For an overview of base history, visit the Dyess Visitor Center Memorial Park just outside the base at Arnold Blvd. and Military Drive.

Fort Phantom Hill was established 1851 to protect frontier from Indians, the post suffered a series of hardships; was abandoned in 1854. Historians say desertions were frequent due to monotony and loneliness. The fort burned shortly after abandonment; chimneys and foundations are principal remainders along with the stone commissary, guardhouse and powder magazine. Site offers interpretive signs.

Frontier Texas: Friendly travel counselors and travel information kiosks are ready to assist in your discovery of Abilene, the Texas Forts Trail, and the 63-county “Texas Frontier” region. In addition, see the big picture of the Texas frontier between 1780 and 1880 as it comes to life, all found in this new multimedia facility in historic downtown Abilene. This attraction includes: *Welcome Theater*—A holographic introduction to “Spirit Guide” historical figures—Indians, frontier settlers, buffalo hunters and soldiers—all icons for stories that follow. *Spirit Gallery*—Dramatic media and dimensional exhibits let you experience many different lives as soldiers, cowboys, homemakers, buffalo hunters, lawmen, gamblers and outlaws all seek their destinies. Via the magic of technology, hear and see stories in “first-person” from Western legends like Doc Holliday, Cynthia Ann Parker and George Reynolds, a man who lived for 15 years with an arrow in his stomach. *Century of Adventure*—A full-surround visual thrill ride through Texas frontier history. Feel the terror of a prairie wolf attack, the chaos of a buffalo stampede, the tension of a deadly shootout in the Beehive Saloon, and the magic of fireflies flitting around your head.

Grace Museum is comprised of a fine arts museum, a history museum, a children’s museum and an educational center, all are in the historic Grace Hotel. Built in 1909, the Grace is listed on the National Register of Historic Places and portions of the building are restored to its 1929 appearance.

Paramount Theatre is an Abilene Historic Landmark; the Paramount Theatre is on the National Register of Historic Places. Inside the beautiful art deco building visitors will find slow, drifting clouds and twinkling stars on a blue sky. Neon and incandescent cove lighting alter the brightness and coloring of the sky beyond the archways and bell tower with twin domed turrets.

Classic, art-house and special films, as well as concerts, live theater and touring shows throughout the year.

Abilene Zoo One of five largest in state; more than 173 species of animals (500 animals consisting of giraffe, jaguars, bison, whiter tiger, monkeys, birds, black rhinos, and more) displayed in natural habitats. Special features are the Creepy Crawler Center (49 exhibits of rare reptiles, amphibians and invertebrates), Wetlands Boardwalk. The zoo is in Nelson Park, at Hwy. 36 and Loop 322 across from the Taylor County Expo Center. Open daily 9 a.m.–5 p.m. (Memorial Day–Labor Day, open Thurs. 9 a.m.–9 p.m.). Closed Thanksgiving, Christmas Day and New Year’s Day. Admission fee. 325/676-6085. www.abilenetx.com/zoo.

ACU-Cockerell Art Gallery is home of a wide variety of exhibits and events, including the performing arts. The Gallery features student and faculty shows, competitions, art workshops and lectures, and exhibits by nationally renewed guest artist.

Public Sculptures: Abilene is known for its numerous public sculptures. One being Jacob’s Dream by Abilene artist Jack Maxwell.

Other continuing education opportunities in Abilene include: *Abilene Ballet Theatre, Abilene Community Band, Abilene Philharmonic Orchestra, Abilene Opera, Chorus Abilene, Abilene Community Theatre, Amy Graves Ryan Little Theatre at McMurry University, Sewell Theatre and Williams Performing Arts Center at ACU, Van Ellis Theatre at Hardin-Simmons University, and bird watching and nature trails.*

Albany approximately 1 ½ hours southeast

Georgia Monument was erected in 1976 to fulfill long-standing promise to honor the Georgia Battalion that volunteered in Texas’ war for independence in 1836. Most were killed in the Goliad massacre; Dr. John Shackelford, for whom the county is named, was spared as useful to Mexicans. Flags of the State of Georgia, Texas Republic and U.S. fly over the stone marker and fountain. Plaques detail the Georgians’ contribution to the new republic.

Ledbetter Picket House is a restored frontier ranch structure with rustic period furnishings. House is a dog-run cabin built of slender upright poles (pickets).

The Old Jail Art Center is an exceptional permanent art exhibits include works of Giacomo Manzu, John Marin, Charles Umlauf, Louise Nevelson, Henry Moore, Amedeo Modigliani, Pablo Picasso and examples of Chinese art from the Han, Wei, Sui, T’ang and Ming Dynasties. Also research facilities for artists, historians, critics and scholars. Housed in restored county jail (c. 1878).

Altus Ok, approximately 1 ½ hr northeast

Oklahoma Arts Institute The Oklahoma Arts Institute is a private, non-profit organization with a vision to cultivate established and emerging artists and educators through art workshops, immersion and awareness. Since 1977, the Oklahoma Arts Institute has recruited nationally renowned artists to teach a fine arts program for talented Oklahoma youth and a series of continuing education workshops for adults.

Morgan Doll Museum: This specialty museum features 4,500 antique and collectable dolls, doll buggies, and doll houses. Other displays include 500 Madame Alexander dolls, over 50 Shirley Temple dolls, antique French and German dolls, and many dolls from 1890 to 1905. Free identification of your doll from one of the largest research libraries around.

Museum of the Western Prairie The museum is designed to resemble the half-dugout homes of early settlers. The Museum of the Western Prairie chronicles the history of Southwest Oklahoma. Visitors can learn about geologic uplifts and ancient seas to irrigated farming and the Altus Air Force Base. Visitors can also follow the activities of Native Americans, frontier soldiers, cowboys, and homesteaders. Guided tours available with advance notice.

Wichita Mountain Wildlife Refuge consists of 59,020 acres administered by the Department of the Interior, Fish and Wildlife Services, located north of Lawton OK just east of Snyder OK at the junction of state Hwy 115 and 99. Visitors can enjoy the many varied attractions including viewing /photographing wildlife, in their natural settings, lakes, streams, camping centers and grasslands. There are numerous hiking trails designed for the novice and others available for the seasoned hiker. Several lakes are encompassed in the Refuge boundaries. The refuge offers many unique programs and tours, some of which venture into the Special Use Area of the refuge. Environmental Education Classes covering most natural resource related subjects can be scheduled by calling the Refuge.

Amarillo approximately 2 hours northwest

Amarillo Botanical Gardens was completely renovated in 2000, this museum has a living collection. Botanical Garden features outdoor and indoor educational exhibitions with plant displays, butterfly, touch and smell, and other demonstration gardens. Newest exhibit is the Mary Bivins Tropical Conservatory, a glass pyramid with more than 6,000 square feet of tropical flora and fauna.

Amarillo Museum of Art was renovated in 2004; this visual arts museum features a broad range of paintings, prints, photographs, sculptures and textiles from 20th-century artisans. Also includes Southeast Asian artifacts. Exhibits change frequently. 2200 Van Buren Street on the campus of Amarillo College.

American Quarter Horse Hall of Fame and Museum reopened after more than a year of major renovations, this facility includes quarter horse outfitters, state-of-the-art technology, artifacts and histories of the breed.

Cadillac Ranch “Bumper crop” of 10 Cadillacs buried nose down in field at same angle as Cheops’ pyramids. Represents Golden Age of Automobiles from 1949 through 1963. About 12 miles west of downtown.

Don Harrington Discovery Center is a 51-acre park with lake and picnic area, the center offers a variety of attractions. The center hosts a diverse collection of special exhibitions on physical, earth, and life sciences each summer. There are more than a 100 permanent hands-on activities for kids of all ages and planetarium shows to learn about the stars, constellations, planets and the solar system. There's also a 3,000-gallon aquarium with saltwater and freshwater habitats for marine life and a Foucault Pendulum that rotates independently of the earth's gravitational pull, and a helium technology exhibit. A weather watch area features popular displays such as the tornado machine, cloud ring machine, and turbulent orb. Also includes new digital Space Theater.

Helium Monument Six-story stainless steel time column erected 1968 commemorates the unusual natural element found near here in world’s greatest quantity.

English Field Air and Space Museum is housed in two 1930s airport hangers. It boasts of dozen Korean War and Vietnam War period helicopters and airplanes, including the F-84F Thunderstreak, as well as NASA’s Mars Lander craft.

Harrington House - This 1914 neo-classical house reflects exquisite materials and workmanship, as well as fine French and English furniture, porcelain, crystal, silver, carpets and fine paintings. Free guided tours with prior reservations.

Kwahadi-Kiva Indian Museum and Kwahadi Dancers Museum is geared to preserving the history of the Native Peoples of the Plains. Includes art displays and exhibits. Ceremonial dances are performed throughout the year. Also serves as a youth hostel.

Texas Pharmacy Museum at Texas Tech University's School of Pharmacy offers informative guided tours on the changing roles of the old fashioned drugstore and the pioneer pharmacist. Antique pharmacy cases contain vintage beakers, bottles and scales.

Wildcat Bluff Nature Center is more than 600 acres of rolling grassland with nature trails, wildflowers, knee-high grasses and huge cottonwood trees. Outstanding place to see Texas Panhandle's ecosystem. Three miles north of I-40 on Loop 335.

Amarillo Civic Center & Globe-News Center for the Performing Arts Home to Opera, Symphony, Ballet as well as a variety of special events, concerts and education of the arts to 80,000 children in the panhandle. Easy access I-40 & I-27.

Amarillo Opera Guest artists and talented cast perform world beloved operas in English. Schedule/performances 806 372-7464 www.amarilloopera.org.

Amarillo Symphony From String Quartets to a Symphony Youth Orchestra, panhandle symphonic artistry at it's best since 1924. Dates/Times 806 376-8782
www.amarillosymphony.org

Lone Star Ballet Promotes the art of dance with scholarships to West Texas A&M University students. A full season of lovely choreographed productions with the highlight of the year, "The Nutcracker". 806 372-2463 www.lonestarballet.org

Amarillo Little Theatre Community theatre. One of the oldest continuously performing theatres in the U.S. 806 355-9991 www.amarillolittletheatre.org

Amarillo Civic Center Concerts & Broadway shows. Excellent choice for conventions, meetings and exhibits 340,000 sq. ft. for multi purpose tasks.

Ballroom dancing to Rodeo's 401 S. Buchanan I-40 and I-27 (806) 378 3096.

Starlight Theater, Sam Houston Park: Live music & outdoor concerts time and dates 806 378-3036.

Doc Holidays Top 40 Country & Dancing 3601 Olsen Blvd. 806 331 6474.

Polk City Entertainment District Nightlife downtown Amarillo, between 6th and 9th.

Amarillo Zoo features a herd of bison grazing on a 20-acre range, plus other animals of the High Plains, and a special "Texotic" exhibit. It's fun for the entire family. Open year-round Tues.-Sun. 9:30 a.m.- 5 p.m. NE 24th St. at U.S. 287. 806/381-7911. No admission fee.

Red Breaks Ranch located just northwest of city, hosts authentic chuck-wagon meals daily. Visitors ride on covered wagons then watch working cowboys prepare authentic breakfasts or dinners.

Route 66 (Old San Jacinto) Get your kicks on Route 66! Amarillo was the largest Texas city on Route 66, and many Route 66 fan clubs have sprung up all over the U.S. and the world. Look for the "Old Route 66" highway signs installed by the Texas Department of Transportation marking the route through the area, making it easier for visitors to find that piece of Americana. One mile of antique and specialty shops, along with restaurants, await visitors along the historic route. Located along 6th Ave. between Georgia and Western streets.

Anson approximately 1 ½ hours south on Hwy 83

Anson Jones Museum In historic church building. Artifacts include miniature reproduction of town square as it existed in 1904, a desk and chair used by Dr. Anson Jones in his medical practice and other local memorabilia.

Opera House was built in 1907 by Albert W. Johnson; considered “fanciest” showplace between Fort Worth and El Paso. Once hosted musical and dramatic productions, public and civic activities, silent and talking movies, and even wrestling and bare-fist fighting events until the 1930s. Today used for stage productions and a country/western musical usually the third Saturday of the month. On north side of square.

Buffalo Gap outside Abilene

Buffalo Gap Historic Village Complex of 15 historic structures that tell the history of the last 50 years of the Texas frontier. Visitors tour three historic areas set in 1883, 1905 and 1925, all centered on the original 1879 Old Taylor County Courthouse and Jail. Buildings include pioneer log cabins, medical display, barbershop, and railroad depot with working telegraph system, blacksmith shop, 1925 two-room schoolhouse, bank and gas station. Farm and domestic equipment, firearms and Indian artifacts are on display in wagon barn and village museum. Buffalo Gap Mercantile has a wide assortment of Texas gifts and books. Short video on history of area in visitor’s center. Bathroom facilities, picnic and playground equipment also on site. Also is demonstrated by re-creating the sights, sounds and smells of a 1880s-era game, interpreters and volunteers illustrate how the game of Baseball has changed between 1883 and the present.

Chillicothe approximately 1 hour northeast

Texas Agriculture Experiment Station Established in 1905 stemming from a request by local farmers due to a lack of feed grains available to the region, this station’s testing of grain sorghum led to the development of the hybrid grain sorghum cultivated today. A Texas Historical Marker recognizes the station and the work of J. Roy Quinby. Visitors here find research plot equipment and other office equipment used in the testing programs.

Canyon approximately 2 hours northwest

Panhandle-Plains Historical Museum Find it all at the largest history museum in Texas — western history, art, oil wells, windmills and dinosaurs. Enjoy an engaging, educational experience; a diversity of perspectives; and a continually changing presentation of the museum’s exceptional collections. Learn about those who came before us, and see how people, today, reflect the triumph of the human spirit that has overcome adversity and hardship. Within the museum’s tremendous holdings, visitors will find the heart of Texas art, the free spirit of the Taos and Santa Fe schools of art and unsurpassed Southwest American Indian art. Unlock the hidden world of the ancient past through the paleontology, geology and archeology areas, while learning about the rich history of the region. The Research Center holdings include architectural drawings and maps, manuscripts and photographs, oral history interviews, farm and ranch records, and manufacturer’s trade literature.

Palo Duro Canyon State Park One of the largest state parks, 26,000 acres amid scenic landscape of Palo Duro Canyon. On the tabletop expanse of the Texas High Plains, a branch of

the Red River has carved the incredible spires and pinnacles of Palo Duro. Walls plunge almost a thousand feet to the canyon floor, exposing brilliant, multicolored strata. Camping, picnicking, rest rooms and showers, horseback riding and hiking trails. Also, souvenir shop, interpretive center and amphitheater where shows are staged during the summer season. Three newly restored cabins available for overnight rentals located on the canyon rim

Buffalo Lake National Wildlife Refuge: One of the major waterfowl refuges on the Central Flyway, the 7,677-acre haven is a winter home for a million ducks and 80,000 geese. Once known as Tierra Blanca Water Conservation Project, the lake now holds very little water, but refuge—about 12 miles west—continues to draw visitors on its interpretive walking trail and 4.5-mile auto interpretive trail. Activities include picnicking, sightseeing, birding, nature study, photography and campsites with tables and grills. No water or electricity.

Texas: Outdoor, musical theater located in Palo Duro Canyon state park; depicting the historical romance of the west and the settlement of Texas in the 1800s. With a 600 ft. cliff as the backdrop, live music, dance and state of the art light and sound effects, Pioneer Amphitheatre provides one of the most spectacular theatrical experiences in the nation. Season runs June-August and shows are held Tue.-Sat. Barbeque dinner served before every performance from 6-8 pm. www.texas-show.com

Dickens approximately 1 hour southwest

Dickens County Museum Early pioneer and ranching heritage collection. Includes county, city and area histories; photo gallery; antique furniture; appliances, and clothing. Also has a small library and reading room. Antique farm equipment is on the south lawn.

Dickens County Springs Park is a 72-acre scenic parkland features walking trails along side springs. Picnic areas enclosed by a teepee and a branded chuck wagon. Open from sunrise to sunset.

Electra approximately 1 ½ hours northeast

Electra was designated a Texas Main Street City in 1998 and has been named a National Main Street community annually since 2000. In 2004, it was named a “Preserve America” community, a White House initiative to recognize efforts to preserve and share our cultural and natural heritage.

Hale Center approximately 1 ½ hours west

Bell Park Cacti Garden: Established in honor of Hershell Bell, agronomy and range management authority; contains more than 350 specimens with 15 different species. Walk-through path and picnic tables. At intersection of F.M. 1424 and F.M. 1914

Hale County Farm and Ranch Museum: More than 200 examples of vintage farm equipment from horse-drawn threshing machines to huge 1912 Case steam tractor. Museum consists of four buildings, including the 1910 Santa Fe Depot. The first irrigation pumps developed by George Green (inventor, machinist and engineer) are displayed, as well as some 20 stationary restored engines. On five acres one mile south on I-27, exit 36

Plainview approximately 1 ½ hr northwest

Abraham Family Art Gallery: One of the first art centers in the Southwest is in the Learning Resources Center on the Wayland Baptist University Campus. Rotating exhibits.

Historic District: Nationally recognized historic district features brick streets installed during World War I era, specialty shops, antique shops and restaurants. Designated a Texas and National Main Street City.

Museum of the Llano Estacado: Bears the traditional Spanish name for the Texas High Plains. Regional museum emphasizes the development of the geographical area of the Llano Estacado. Maintains 80 exhibits chronologically describing the geological, prehistoric, cultural and economic development of the region. Housed in the J.E. and L.E. Mabee Regional Heritage Center, on 8th St. behind Wayland Baptist University's campus.

Lubbock approximately 2 hours west

American Museum of Agriculture Displays include machinery and artifacts dating back to pioneering years of agriculture. Exhibits include 70 pedal tractors, 300 toy tractors, restored tractors and horse-drawn equipment.

American Wind Power Center A museum for the American-style water-pumping windmills on 28 acres in Yellow House Canyon. More than 120 rare and fully restored windmills are on display in an interpretive center and on the grounds. Exhibits also include hand pumps, models, photographs and other windmill artifacts. Center tells the story of how the windmill settled the West, giving access to underground water on land where there were no rivers, streams or lakes.

Apple Country Pick-your-own apples or purchase goods from the gift shop, bakery or Country Cafe. Features a cider mill, wedding gazebo, orchard tours, catering services and mail order shipping of jams, jellies, baked goods and gifts. Apple Country also has its own award-winning Apple Country Apple Spice Wine. The 19-year-old orchard is comprised of 30 varieties of apples. Visitors welcome year-round.

Buddy Holly Center No visit to Lubbock is complete without a stop to view the most comprehensive permanent exhibition dedicated to the life and music of Buddy Holly, Lubbock's most celebrated native son. The center is a cultural arts facility offering programs in the visual arts and Texas music. It houses the Buddy Holly Gallery, Texas Musicians Hall of Fame, Fine Arts Galleries and a museum shop. Group tours are available and the center hosts a variety of educational and cultural events. 1801 Crickets Ave. in the Depot District.

Buddy Holly Statue and Walk of Fame Honors Lubbock and West Texas natives who have made significant contributions in entertainment industry. Plaques for Mac Davis, Waylon Jennings, Jimmy Dean, Bobby Keys, G.W. Bailey, Barry Corbin, four members of the Crickets, Tanya Tucker, Roy Orbison, Bob Wills, the Gatlin Bros. and more. Center of the walk features a bronze statute of rock-and-roller Buddy Holly. The Buddy Holly Festival is usually held in early September. 8th St. and Ave. Q.

Depot Entertainment District A nightclub and restaurant area features a variety of foods and entertainment. The Cactus Theater is a restored 1930s motion picture theater, which now offers live music and theater productions. Nightclubs feature live music, including country/western, popular alternative and rhythm & blues. Also includes a microbrewery and winery. Downtown adjacent to I-27 at 19th St. & Buddy Holly Ave. 800/692-4035.

Louis Hopkins Underwood Center for the Artist Home to many arts and cultural organizations in the South Plains Area. Campus includes multiple working art studios, visual art galleries, theater, and rehearsal hall. Features “First Friday Art Trail,” a monthly evening of arts and entertainment downtown, and the annual Flatland Film Festival.

Lubbock Area Veterans War Memorial Brick and marble monument dedicated to veterans of Lubbock and South Plains area, created to honor sacrifices made by local veterans. Center portion of memorial commemorates area veterans who were killed in action. Other sections honor living and deceased members of the U.S. Armed Forces and for citizens who wish to show support of veterans and the memorial. At 82nd & Nashville in Henry Huneke Park. 806/794-9006. www.lubbockwarmemorial.com.

Lubbock Arts Alliance The official arts agency of Lubbock. Provides programming and services that benefit local artists and arts organizations. Gallery features different regional artists monthly. 511 Avenue K. Open Mon.–Fri. 9 a.m.–5 p.m. High Noon Concert series showcases local performers every Wednesday, June–August at the County Courthouse Gazebo at 904 Broadway. 806/744-2787. www.lubbockarts.org

Lubbock Lake Landmark Approximately 12,000 years of history is what makes Landmark an internationally recognized archaeological and natural history preserve. A unit of Texas Tech University, site documents a continuous human presence on Southern High Plains since the time of large, extinct mammals such as ancient bison, giant short-faced bear and Columbian mammoth. The Robert A. Nash Interpretive Center houses a visitor center and museum exhibits, and four miles of outdoor trails offer unique urban green space. Features extended hours and on-site archeological work June–August.

Mackenzie Park/Prairie Dog Town 248- acre day-use park is Lubbock’s largest recreation area including the recently renovated Meadowbrook Golf Course, a world-class disc golf course and Joyland Amusement Park. Prairie Dog Town in park is one of few remaining colonies of its type in the nation. Visitors enjoy close-up views of the frisky little animals that once inhabited the plains by the millions. Area also features equestrian trails and a new sculpture garden featuring larger-than-life sculptures by artist Steve Teeters. 4th Street and I -27.

Museum of Texas Tech University Internationally recognized museum houses collection in the arts, humanities, social sciences and natural sciences featuring nearly two million objects. Star shows available in adjoining Moody Planetarium. Also visit the museum’s Lubbock Lake Landmark, Natural Science Research Laboratory and the Val Verde County research site. Notable exhibits include the Diamond M Fine Art Gallery and the Helen DeVitt Jones Auditorium and Sculpture Garden. At 3301 4th Street.

National Cowboy Symposium and Celebration Lubbock is home to this national Western event. Cowboy poets, musicians, storytellers, artists, historians, authors, editors, publishers, photographers, cooks and honest-to-goodness-cowboys gather to explore the traditions of the American frontier. This event is usually held the Thurs.–Sun. after Labor Day weekend.

National Ranching Heritage Center History of ranching told through 45 authentic structures moved to this 16-acre site. Structures include a bunkhouse, barn, dugout, windmills, blacksmith shop and more. All date from the 1700s through the early 1900s, all authentically restored and furnished.

Science Spectrum and Omni Theater Unique, hands-on museum featuring interactive science exhibits, plus live animals and aquariums all dedicated to showcasing science and technology education in an exciting environment. The OMNI Theater features an advanced projector

system, a 58-foot dome screen and a 12,500-watt sound system to let the audience feel like they're part of the movie. Located at 2579 S. Loop 289, between University and Indiana.

Silent Wings Museum is dedicated to the history of the U.S. Military Glider Program and its role in World War II. Exhibits feature one of the few fully restored World War II gliders in existence and includes three exhibit galleries, a multimedia theater, a C-47 airplane, research library, museum store, training and combat experiences plus restored aircraft. 6202 North I-27. ***Texas Tech University*** offers variety of theater, music and dance performances throughout the year, as well as Big XII sporting events. Texas Tech Visitors Center: 806/742-1299.

www.visit.ttu.edu, 2500 Broadway in West Hall

Vietnam Center and Archives This collection is the largest primary source materials of the Vietnam War outside of the holding of the U.S. government. Reading room available for onsite research. In the Texas Tech Southwest Collection/Special Collections Library at 15th Street and Detroit.

Cactus Theater is considered by many to be their main source of entertainment in West Texas for live musical productions, theater plays and concerts.

Fair Park Coliseum was constructed in 1954 on the fair grounds at Ave. A. It seats 5376 and has hosted many famous entertainers including Elvis Presley and Buddy Holly.

Municipal Garden and Arts Center is located in Clapp Park and offers a rich variety of arts programs for all ages. It has meeting space for many cultural groups and non-profit organizations.

West Texas Wall of Fame Featuring a statue of Lubbock legend Buddy Holly. Honors West Texas music legends including Buddy Holly & the Crickets, Waylon Jennings, Mac Davis, Roy Orbison, Tanya Tucker and more. At 8th Street and Avenue Q.

Wineries

Cap*Rock features a tasting room, gift shop and tours Tues.–Sat. 10 a.m.–5 p.m.; Sun. noon–5 p.m. From South Loop 289, U.S. 87 south approximately 6 miles. to Woodrow Road, then east to the winery. 806/863-2704.

Llano Estacado Winery, born from a casual experiment with grapevines shading a Lubbock patio, this winery now is one of Texas' largest. Tasting room samples Chardonnay, Chenin Blanc, Riesling and others. Gift shop and tasting open Mon.–Sat. 10 a.m.– 5 p.m., Sun. noon–5 p.m. Tours available. Take U.S. 87 south to F.M. 1585, then 3.2 miles east. 806/745-2258. www.llanowine.com.

Pheasant Ridge Winery produces wines from a 50-acre vineyard located in the Texas High Plains. Wines include Cabernet Sauvignon, Merlot, Pinot Noir, Proprietor's White, and dry Chenin Blanc. Free tours and tastings: Fri.–Sat. 10 a.m.–5 p.m.; Sunday noon–5 p.m. Other times by appointment. Take I-27 north to New Deal, F.M. 1729 east 2 miles, then one mile south to winery. 806/746-6033.

Ralls approximately 1 ½ hr west

Ralls Historical Museum Exhibits include Indian artifacts, history of early railroads in area and 19 period room settings—kitchen, bedroom, doctor's office, barbershop, veteran's room and others.

Roaring Springs approximately 1 hour southwest

Roaring Springs Depot Museum This mission-style building with red tile roof was built in 1913 and served as railroad depot until 1971. The city purchased the building housing the museum containing local memorabilia.

Cynthia Ann Parker Memorial Marker, Roaring Springs Ranch Club, Roaring Springs. This marker tells the story of an Indian camp of the Comanche Indians in 1860 when Cynthia Ann Parker was recaptured from them near Medicine Mound in Foard County.

Silverton approximately 2 hours northwest

Clarity Tunnel on Hwy 246 was the last operating railroad tunnel in Texas which now houses Colony Mexican Freetail Bats. Visitors to the tunnel are allowed to partake in hiking, biking and equestrian on the trail.

Old Jail Museum Built in 1892; old stone jailhouse is oldest building in the county. Features old jail office with cells upstairs. Outside is restored windmill on courthouse square. Open Mon.–Fri. during business hours. Visitors should visit county attorney’s office for entry.

Scenic Drive The area includes spectacular scenery in Palo Duro Canyon, Tule Canyon and the edge of the Caprock. Vivid illustrations of High Plains topography along Texas 86 and Texas 207 north. Travelers will see immense proportions of High Plains agriculture where the land is typically flat—then in startling contrast, the effect of erosion where watercourses have carved plunging, colorful canyons. Drive between Silverton and Claude crosses both Tule and Palo Duro Canyons. Texas 256 east reaches edge of the High Plains, or as local residents say, edge of the Caprock, and spirals down jagged escarpment amid feast of scenic vistas. This dramatic change in scenery marks eastern edge of Great Plains of the United States. Texas 86 east offers another scenic route down edge of Caprock and through the town of Quitaque.

Snyder approximately 2 hours southwest

A “maze”ing Fun Mazes This unique attraction allows visitors to navigate their way through a maze cut into a live cornfield. Mini-mazes, wagon rides, hayrides, tented picnic areas, an area of arts & crafts, antiques and collectibles are also available. Open mid-Aug. to Nov., Fri.–Sun. 4–11 p.m. Off of U.S. 84 at Gafford Family Farms.

Towle Memorial Park Popular municipal park with playgrounds, athletic fields, swimming pool, picnic areas, courts for croquet and tennis, fishing lake for youngsters and prairie-dog town where the now rare little animals can be seen at close hand. Engine No. 5, last steam locomotive used by the Roscoe, Snyder and Pacific Railroad, is also on display. South side of city on Texas 350.

Wagon Wheel Ranch From a hearty breakfast to grilled steaks at dinner, activities are tailored to suit your interests. The Wagon Wheel Ranch is a working dude ranch stocked with Texas longhorn cattle. Trail rides might include moving a few Longhorns. Take U.S. 84 north to F.M. 1142, turn right and go three miles to crossroads C.R. 2128; turn left, go one mile to ranch entrance on the right. 325/573-2123.

White Buffalo Statue Recalls frontier days and rare albino buffalo killed near here which is located on the courthouse square. Several historical markers on square detail area history.

Tulia approximately 1 ½ hours northwest

Swisher County Archives and Museum maintains collections of ranch and farm artifacts. A five-room house, rebuilt inside the main exhibit hall, is furnished with pieces from the early 1900s. A replica of the J.O. Bass Blacksmith Shop is also located in main exhibit hall and features Bass' tools and equipment. Other displays include military artifacts, needle art, Santa Fe Railroad and Native American artifacts, as well as exhibits featuring Quanah Parker and Col. Ronald MacKenzie. Written, oral and video histories of the county are maintained, as well as an outstanding photographic history of early life in the area. Outside exhibits include the 1917 Jowell House, (including its outhouse) furnished with 1930s artifacts.

Kenneth White Gallery located in Tulia has information and some of his art objects available for sale.

Wichita Falls approximately 2 hours east

Backdoor Theatre A turn-of-the-century icehouse transformed into a charming community theatre. Performances Thurs.–Sat. 501 Indiana. 940/322-5000. www.backdoortheatre.org

Kell House Historic home of local business and community leader, Frank Kell. Original 19th-century furnishings include player baby grand piano, seven fireplaces, hand-stenciled decorations; changing exhibits.

Midwestern State University Fine Art Gallery Features works of regional artists throughout academic year. Emphasis on students' art May–July. Open Sept.–Jun., except holidays, Mon.–Fri. 9:30 a.m.–noon; 1–4 p.m. while classes are in session. West Campus Dr. at Nocona Trail in southwest part of city.

Museum of North Texas History Displays various exhibits including petroleum, Western Heritage with more than 500 hats, as well as a large military collection At 720 Indiana. Auxiliary site: rare Curtis JN4 aircraft (“Jenny”) from World War I in flying condition at Kickapoo. Open Tues.–Fri. 10 a.m.–Noon, 1–4 p.m.; Sat. 10 a.m.–2 p.m.

Railroad Museum Vintage rail cars recall nostalgia of train travel. Cars include MK&T diesel switch engine, Texas & Pacific Pullman car, two World War II troop sleepers, Fort Worth & Denver baggage car and post office car and a Burlington coach “Silver Falls,” plus a number of cabooses. Open Tues.–Sat. noon– 4 p.m. 500 9th St. 940/723-2661

Riverbend Nature Center Nestled amid 15 acres in the city, River Bend Nature Works is an environmental education center. Visitors enjoy the wetland pond, the bird habitat, bird watching and other activities. A one-mile interpretive nature trail loops through the site; one-half mile of the trail is handicapped-accessible. *Ruby N. Priddy Butterfly Conservatory* is a 7,000-sq. ft. glass structure, which rises more than 47 feet in the air, features 120 species of native wildflowers, shrubs and trees and hundreds of native and migratory species of butterflies will fly through the environment. Pavilion features picnic tables and handicapped-accessible rest rooms.

Wee-Chi-Tah Sculpture Multi-part statue stands on the banks of the “waist deep” Wichita River. Located near the Front Street Bridge in the 500 block of Wichita St., sculptor Jack Stevens' creation is a life-sized replica of a Comanche woman and her companions as she tested the river's depth, and gave a river and city its name.

Wichita Falls Museum of Art of Midwestern State University Exciting art, science and history exhibitions at the museum change frequently. Laser and Planetarium shows. Open

Tues.–Fri. 9:30 a.m.–5 p.m.; Sat. 10:30 a.m.–5 p.m. N2 Eureka Circle. No admission fee. 940/692-0923.

Wichita Falls Vineyards and Winery Nestled between Wichita River and Buffalo Creek includes tasting room and gift shop. Open Mon.–Sat. 10 a.m. – 6 p.m., Sun. 2–6 p.m. 3399 Peterson Road South. 940/855-2093. www.wichitafallsvineyardsandwinery.com

Wichita Falls Waterfall A re-creation of falls faces north on I-44 and replaces original falls washed away in a flood in 1886. Water that forms 54-foot-high falls re-circulates at 3,500 gallons a minute. About a mile south of Travel Information Center.

Wichita Theatre and Opry House Built in 1908, this State Historical Landmark is home to an endless variety of quality family entertainment, including live concerts, touring shows, musical dramas, performing arts and film events. 940/723-9037. www.wichitatheatre.com.

Drive In Theaters within 2 hours or less drive of Paducah

Valley-Quitaque-Turkey operates during the summer months until late fall.

Rule, TX check website for drive in theaters for more information.

Town and County in Abilene, check website for up to date information.

Sandel Drive In Theatre, Clarendon

Wellington Ritz Theatre Wellington (not a drive-in, but the restored Ritz) offering movies during the week and special theater performances on Sunday afternoons at least once a month.

Stars & Stripes Drive-In, Lubbock 5101 Hwy 84 806-749-SHOW Stars & Stripes Drive-in Movie Theater. You use your own stereo equipment in your vehicle or a portable radio. New releases shown. Double features \$5 per person. Dine during movie. “We serve the Original Chihuahua”.

Military Facilities within 2 hours of Paducah

Dyess Air Force Base: Abilene, TX

Shepherd Air Force Base: Wichita Falls, TX

Altus Air Force Base: Altus, OK

Universities and College with in 2 hours drive of Paducah

Clarendon College, Clarendon, offers technical programs up to two years in length leading to associate degrees or certificates, occupational programs leading directly to employment in semi-skilled and skilled occupations; freshman and sophomore courses in arts and sciences; ***continuing adult education programs for occupational or cultural upgrading***, compensatory education programs designed to fulfill the commitment of an admissions policy allowing the enrollment of disadvantaged students, a continuing program of counseling and guidance

designed to assist students in achieving their individual educational goals, workforce development programs designed to meet local and statewide needs, ***adult literacy programs and other basic skills programs***, and, such other purposes as may be prescribed by the Texas Higher Education Coordinating Board or local governing body. Clarendon College offers classes in Childress, 30 miles north of Paducah.

Vernon College, Vernon is a comprehensive community college that integrates education with opportunity through our instructional programs and student services college has technical programs up to two years in length leading to associate degrees or certificates; Vocational programs leading directly to employment in semi-skilled and skilled occupations; Freshman and sophomore courses in arts and sciences, including the new core and field of study curricula leading to associate and baccalaureate degrees.

Continuing adult education programs for occupational upgrading or personal enrichment; courses include computer classes from basic to web design, personal finance, digital photography, start your own business all on line to defensive driving, basic photography, container gardening, floral arranging, beginning country and western dance to scrap booking basics and beyond at the Vernon campus.

Compensatory education programs designed to fulfill the commitment of an admissions policy allowing the enrollment of disadvantaged students;

A continuing program of counseling and guidance designed to assist students in achieving their individual educational goals;

Workforce development programs designed to meet local and statewide needs;

Support services for educational programs and college-related activities;

Adult literacy and other basic skills programs for adults; and

Such other programs as may be prescribed by the Texas Higher Education Coordinating Board or local governing boards in the best interest of postsecondary education in Texas ***has distant learning programs and continuing education available .***

Wayland Baptist University, Plainview began in 1908 as the dream of pioneers who respected the life-altering value of education. Now the oldest university in continuous existence on the High Plains of Texas, Wayland Baptist reaffirms that commitment every day through a distinctive combination of offerings. Main campus in Plainview, a community of 25,000 on the high plains of West Texas between Lubbock and Amarillo. As a member of the Council for Christian Colleges and Universities (CCCU), Wayland Baptist University participates in the bestsemester.com program. CCCU's bestsemester.com offers students an opportunity to experience the real world and share their faith in either an international or national environment. The Culture Shaping program focuses on participating in the American Studies Program, Contemporary Music Center, Washington Journalism Center, and the Los Angeles Film Studies Center. The Culture Crossing program has an international focus with China Studies Program, Latin American Studies, Middle East Studies, the Scholars' Semester in Oxford, Russian Studies, Oxford Summer, Australia Studies Center, and Uganda Studies. Credit is available for participation in these programs. ***There are on line courses available as well as auditing classes for non credit. Auditing is 1/3 tuition, but retired people can apply through admissions for a gold card to pay for tuition.*** Wayland also offers classes at its extension in Altus, OK.

Abilene Christian University, Abilene offers on line classes and continuing education courses. Selective, private, master's-level university founded in 1906 in Abilene, Texas Graduates accepted into medical schools at a rate more than twice the national average Graduates accepted into law schools at a rate of more than 90 percent. One of only 13 private universities in nation with accredited journalism program. Undergraduates included in significant faculty research projects. Ranked fourth among 700 colleges and universities nationwide for investment performance for the 12 months ending June 30, 2006. Majority of students actively volunteer in the community. All-Christian faculty personally interested in students' studies and lives. Students may choose from 62 baccalaureate majors that include more than 100 areas of study, 25 master's degree programs and one doctoral program. Career network of 86,000 ACU alumni in every state and 109 countries. Annual enrollment of 4,800 students from across the U.S. and 60 nations. 62 national athletics team championships. Beautiful, 208-acre, modern campus 180 miles west of Dallas/Fort Worth area.

Hardin-Simmons University, Abilene is a community dedicated to providing excellence in education enlightened by Christian faith and values. Founded in 1891 by a dedicated group of ministers, ranchers, and merchants, Hardin-Simmons University continues its commitment to developing the mind and nurturing the spiritual life of its students. Affiliated with the Baptist General Convention of Texas since 1941, HSU provides an academically challenging undergraduate education based on a liberal arts foundation, and advances scholarly growth by offering specialized graduate and professional degree programs. Combining its commitment to academic excellence with a concern for the development of the total person with a distinctive Christian perspective, Hardin-Simmons serves students through quality educational programs designed to provide *An Education Enlightened by Faith*.

McMurry University, Abilene founded in 1923, McMurry University has gained a national reputation for excellence and value through the achievements of our faculty, students and graduates. We are one of the leading liberal arts universities offering a Christian education through Bachelor's degrees in the fine arts, humanities, social and natural sciences, business, education, and nursing. Steeped in the proud tradition of United Methodist colleges, our 1400 students are affected daily by our Core Values: Christian Faith as the foundation of life, Personal Relationships as the catalyst for life, Learning as the journey of life, Excellence as the goal of life, and Service as the measure of life. McMurry University is a Methodist college that boasts an outstanding faculty and staff whose goal is to maximize each student's level of achievement and to expose them to those qualities that go into making a memorable Christian education and a successful life. You can also read about us in **100 Colleges Where Average Students Can Excel**. They are located on 40 acres in a quiet residential section of Abilene, Texas, a city of 115,930. Just as our college is large enough to offer excellent opportunities while avoiding the impersonal experience of a large school, Abilene, Texas is large enough to offer the amenities of a major city while retaining the safety, convenience, and charm of a small town. Recognized by Money Magazine as one of the top 100 safest places to live, Abilene, Texas has been an All-American City and a consistent winner in USA Today's "Make a Difference Day". Our monthly Art Walk in the restored downtown area is an exciting cultural event that has been showcased on Good Morning America as a model for downtown renewal. McMurry and Abilene are within a comfortable drive of most major cities and attractions of the Great State of Texas.

Midwestern State University, Wichita Falls, TX Students: Enrollment: 6,093 Undergraduate: 5,361 Graduate: 732 Men: 2,575 Women: 3,518 Students Diversity: African American: 13% Asian: 4% Caucasian: 66% Hispanic: 9% International: 7% Other: 1% MSU students represent 41 states and 45 foreign countries. Academics Undergraduate programs: 43 Graduate programs: 24 Full-time faculty: 224 Student/Faculty ratio: 19:1 ***Non-credit short courses offered to the general public with general interest topics such as Art, Computer, Dance, Writing and Finance. Future non-credit special events, including guest speakers, collections presentations, film festivals and special interest trips. Also includes Archive of Past Enrichment Events. The Center for Continuing Education offers quality, diverse learning experiences for members of the community who wish to access the resources of the university in nontraditional ways. We offer a variety of enrichment courses, online development for health care professionals and Continuing Education Units (CEUs).***

West Texas A&M University, Canyon was established in 1910. The enrollment for fall of 2008 was 7,550. The Office of Continuing Education is an integral part of West Texas A&M University and serves as the centralized administrative unit responsible for the planning, development, implementation, ***promotion and evaluation of both credit and non-credit instructional programs for the non-traditional student.*** The primary purpose for continuing education program is to extend the resources of the University to meet the specialized needs of a group of people not generally identified as traditional college students. ***This mission is accomplished through seminars, workshops, institutes, short courses, contract training, independent study (correspondence) and other specialized means of delivery. Also available is the opportunity to study abroad.*** At WTAMU you'll have study abroad opportunities available for the **summer, a semester or even a year.** You could also join one of our **short-term study abroad experiences** with a faculty-led group for 2-4 weeks (accepting students now!!). All this, plus you get course credit and scholarship assistance. It will not only expose you to a different and unique culture, but you will gain experience through time spent abroad that no amount of classroom experience can simulate or replace. The Kilgore Research Center was completed in March of 1966 and contains approximately 25,000 sq. feet of space dedicated to the support of faculty and student research. The center promotes research, provides support for faculty members in the preparation of research proposals, and seeks new alliances for research collaboration with other universities, industry, and government.

Texas Tech University, Lubbock prides itself on being a major comprehensive research university that retains the sense of a smaller liberal arts institution. Although enrollment is over 28,000, Texas Tech students boast of one-on-one interaction with top faculty and an environment that stresses student accomplishment above all else. There are distant learning opportunities on line. Also available through TTU is the **Osher Life Long Learning Institute.** ***The Osher Lifelong Learning Institute at Texas Tech University (OLLI at TTU) provides adults 50 years of age and older with intellectually stimulating learning opportunities. No tests, no grades...*** just the opportunity to explore new and exciting topics, learn new ideas, and pursue new interests in a casual, friendly, university-based setting. Participate in classes, special interest groups, book discussions, dinner and drama, lunch and learning, field trips and social events. Take the opportunity to interact with like-minded people from the community and learn something new... just for the fun of it! Benefits of membership: Discount on all OLLI at TTU classes and special events; Free "For-Members-Only" events and semi-annual socials; 10% discount on any Study

with the Masters classes; Discounts for Texas Tech University theater and music events; Texas Tech Recreation Center membership at faculty/staff rate; Texas Tech Rawls Golf Course membership at faculty/staff rate; OLLI at TTU newsletters; 15% discount at the Tech Traditions Gift Shop; Access to the Texas Tech extensive libraries.

Lubbock Christian University With just under 2,000 students, LCU is proof that good things come in small packages. Established in 1957 by members of the Churches of Christ, our mission is to lift up the spiritual dimension of your life, provide you a quality education, and to support and sustain you through a system of values for living and for service to family, community and church. At LCU: You are valued - Small, personal class size, a 14:1 student to faculty ratio, outstanding faculty and mentors, over 70 exceptional academic programs, and more than \$19 million awarded to 90% of our students.

Amarillo College, Amarillo Adult Leisure Studies students enjoy taking *classes* in a fun atmosphere where they become acquainted with individuals who share the same interests. You might consider attending one of these fun classes with a friend or friends, a spouse, parents, children, grandparents or grandchildren. Adult Leisure Studies classes are open to anyone age 15 and up. A few classes to consider: ***Dance*** Country Western Line Ballroom, Belly; ***Arts & Crafts*** Drawing, Oil/Acrylic/Watercolor Painting, Pottery; ***Games & Entertainment: Blackjack,*** Bridge, Chess, ***Physical Fitness:*** Yoga ,Aerobics , Pilates ,Tone & Tighten ; ***Sports and Recreation;*** Archery, Fencing ,Martial Arts/Self Defense ,Golf , Fishing Amarillo College also offers adult tap, ballet and jazz classes through Dance.

Leisure Living

When visiting Paducah not seen are shopping malls on every corner or entertainment parks, and chain restaurants, but one finds the necessities such as groceries, gas, automotive services, car cleaning and detail service, restaurants, and medical care. All the others are just a short drive away—time wise closer than they are if living in a large city or mega city.

Paducah though small has much to offer in the way of leisure living and activities. There are a few shops in addition to the locally owned grocery store, locally owned automobile dealership, a car wash/detailing service, several locally owned restaurants with wonderful home cooked foods, a variety of churches, several civic organizations and clubs, and entertainment especially local school sporting events. For those who like to travel with a few friends, but desire the advice and guidance of a tour guide, there is usually one trip each summer, organized, planned and offered by one of Paducah's local citizens to the residents. In the past the trip has included New York City, the most popular choice, Chicago, Washington D.C and there is interest being expressed in the Hawaiian Islands and a cruise. If you want to stay close to home visit one of the various ranches in the area where you can relax or take in the cowboy life style.

Matador Ranch, Matador: which is owned and operated by The Matador Cattle Company, is a 130,000-acre working cattle ranch that covers parts of Motley, Floyd, Cottle, and Crosby and Dickens counties. Matador Ranch lies primarily on the Rolling Plains of Texas, although the western edge touches the Caprock or High Plains escarpment. Its landscape includes mesquite, cedar, rolling hills, rugged canyons and open pastures. The ranch supports more than 3,000 head of cattle, as well as Quarter horses and diverse wildlife. Cattle carry the flying V brand, while the horses are marked with a "50." Fred C. Koch acquired both brands, when his company purchased the ranch in 1953. Koch companies such as The Matador Cattle Company utilize a business philosophy, Market-Based Management®, which encourages employees to be principled entrepreneurs. The ranch's management goal is to improve the long-term health and productivity of its renewable natural resources to profitably sustain domestic livestock and wildlife. To achieve this, the ranch has implemented innovative water and grazing management practices. Much of the ranch lies above the Seymour Aquifer, whose spring water is pumped by windmill to manmade tanks. The Middle Pease and Tongue rivers cross the ranch, along with various wet-weather creeks; the Middle Pease feeds into the North Pease River, while the Tongue River empties into the South Pease River. Earthen tanks supplement the watering capacity for wildlife and livestock. The ranch also has a pipeline system to move water to portions of the ranch. Precipitation, mostly rainfall during summer thunderstorms, is about 19 inches annually. Through the use of rest-rotational grazing systems, the ranch has worked to manage the soil and grasses, to ultimately increase the quality and quantity of forage produced

Some of the other Major Ranches in the area include ***the Waggoner Ranch, The 6666, The Triangles, The Pitchfork and Tongue River Ranches.*** ***The Waggoner Ranch*** established in 1849 began in Wise County but gradually moved west. The W.T. Waggoner Estate consisting of approximately 520,000 acres is recognized as the largest ranch in Texas under one fence. Because of Paul Waggoner's love of ranch life and his desire to preserve the history of the early West, he built the Santa Rosa division just south of Vernon. It has become the headquarters for the quarter horse division of the W.T. Waggoner Estate and home of the legendary stallion Poco Bueno.

The *Tongue River Ranch* will allow people to stay overnight to experience life on a ranch with prior arrangements when there is a room available and learn more about “cowboying” and life concerning the operations. Inquires to what the *6666 Ranch* will offer would have to be made individually through the ranch headquarters. *The Guitar Ranch, and Bar 7 Ranch*, in Dickens County gives tours. In Quitaque there are *Pole Canyon Ranch, Yeary Ranch and Smith Ranch* who if contacted could tell you about life on their ranch. In *Kent County* there are ranch tours when arranged through the owners.

When shopping locally there is the Thriftway Grocery store where prices are lower than the large city chain store prices. Thriftway is a member of the Affiliated Grocer Association meaning the weekly advertised specials are available in this store. If you need flowers or a gift, here is a florist and gift shop on the courthouse square where you can find items such the Paducah Christmas ornaments, new for each year, throws portraying old school facades and related scenes, Texas items, and gift selections for “brides to be” in addition to ordering floral arrangements for any occasion. Another gift shop in town, where bridal and baby shower items can be purchased as well as antiques, is located in one of “old homes”. Two resale and consignment stores are located on the courthouse square. One is located in the original site of the first M.E. Moses Variety store building. A boot repair and saddle shop is also located on the courthouse square as is a fitness center. Also located in Paducah are insurance agencies, real estate agencies, accountant, beauty/barber shops, sporting goods store and a funeral home. Should someone want a place, there are opportunity and store spaces available for individual to start or relocate their own business on the courthouse square or in other locations around town.

Paducah’s locally owned grocery is where almost everything can be found and not just food items. A visitor to the Paducah store once commented, “They even sell microwaves in the grocery store”. That’s Paducah. In addition to microwaves, the store has a meat market that still cuts its own meat and to the thickness the customer requests. It sells tomato plants in the spring for Paducah citizen’s gardens. So groceries, garden plants, small hardware items, even microwaves are all here in Paducah at the grocery store.

Good food can be found at any of the restaurants in Paducah. At the Dutch Oven Steakhouse there is always a weekend special that is not on the menu, but the specialty is Angus beef. Crackers Restaurant offers home style cooking from the traditional breakfast items, sandwiches, and burgers to Mexican food. They have daily buffet including Sundays and Friday night fish buffet. Amazing Grazing offers burgers, sandwiches, Mexican food, and on Fridays fish/shrimp specials. The Dixie Maid is so well known for its Dixie Dog that some folks do not feel that they have visited in Paducah unless they have had one. Of course they have other items equally as delicious. The Thriftway Grocery Store makes Pizza to order sold whole or by the slice. There are also fast food items available at the Crossroads Station and Allsup’s.

Paducah has churches of several different faiths. Among them are Southern Baptist, Missionary Baptist, Primitive Baptist and Antioch Baptist Churches. The United Methodist Church, Church of Christ, and Assembly of God Churches are located in Paducah. Also in Paducah are First Christian, Catholic, and Pentecostal Churches. In addition to the churches found in Paducah there are Church of Jesus Christ of Latter Day Saints, Church of God, Jehovah Witness, Lutheran, and

Presbyterian located in Childress, 30 minutes north. In Crowell 30 minutes to the east is a Non Denominational Church. An hour away in Vernon there are Episcopal, Roman Catholic and Disciples of Christ churches.

Citizens of Paducah have a variety of volunteer opportunities available. The Paducah Fire Department is all volunteers and will welcome new able-bodied persons to join them. The Senior Citizens' Center uses volunteers as well as being a place where you can get a great meal, fellowship and take part in the activities. The Senior Citizens' Center prepares and delivers 45-50 meals through 3 "Meals on Wheels" programs, in addition to the meals served in the center daily. Citizens can help out by delivering some of these meals. Paducah's citizens have opportunity to volunteer through the Paducah Chamber of Commerce, local chapters of The Lions Club, Masonic Lodge and Eastern Star, and Delta Kappa Gamma Society International, where residents can either transfer membership or join. The local Historical Committee, Friends of the Library, and Cottle County Leadership Forum are where people of Paducah participate and volunteer in their projects/activities. A number of local and federated clubs who invite new residents to become members are here in Paducah. Some of these include the 1964 Study Club, Delwin Club, Delphian Study Club, Sorosis Study Club, and 1923 Study Club. Paducah has an AA chapter that meets locally. People in Paducah can help in the programs such as 4-H and their project shows, in any of the festivals such as Old Settlers Reunion and Rodeo, Pioneer Days, holiday celebrations, and little league and Boy/Girl Scouts. In Childress there are the Red Hat Society, Rotary, Elks, Retired Teachers, VFW, and American Legion. In Matador there is a Gardener's Club. In Vernon one will find Rotary Club, Kiwanis Club, and Optimist Club to mention a few.

Shopping in the area closest to Paducah include Quanah, Childress, Crowell and Matador. Found here are places such as resale and antiques, V and S Variety, Lowe's Pay-N-Save Grocery, United Grocery, Wal-Mart, beauty shops, and automotive supply stores. Heat, air and plumbing services are found locally as well in the surrounding area. Childress has furniture and appliance stores, but folks in Paducah say for furniture it is worth the drive to Duke, Ok just a few miles further. You will find clothing stores, thrift stores, Dollar General Stores, all within 45 minutes or less. When one has need of jewelry repair or your own designs, it can be found in Roaring Springs and Plainview also worth the short drive. While in either Roaring Springs or Plainview there are other places to shop, eat, and things to see and do. Thacker's Jewelry, Roaring Springs, will give you a manufacturing tour with prior arrangement. Paducah and all surrounding cities have attorneys and CPA's and tax preparation offices. When in Ralls stop to tour the Lone Star Candy Factory and purchase some wonderful candy.

Shopping Malls with most of the major retailers such as Sears, Penny's, Kohl's, and Dillard's can be found in Wichita Falls, Abilene, Lubbock, and Amarillo. Some of these and others are also located in Plainview TX and Altus OK. Penny's has an outlet store in Plainview less than 1 ½ hours to the west. K-Mart still has a store in Abilene. There are many specialty stores in all of these cities.

Area Restaurants include: Longhorn Ranch Steak House, between Crowell and Paducah, specializes in steaks, Ann's Mexican Restaurant, Jaybirds Kitchen, Main Street Café, and Billie

Dean's Restaurant and Motel in Matador. Crowell has a café/restaurant on the square and a Dairy Bar.

In Childress a few of the offerings include: *Aunt Susan's Kitchen*, with sandwiches, soup, salads and casseroles to go located in downtown inside an antique store. *China Buffet, Dawson's Family Restaurant*, with daily lunch buffet and Friday is Seafood Buffet evening, *Three Mexican food restaurants, The Wired Wabbit, Espresso Cafe Bar and Grill*, outdoor beer garden, flat screen TV, pool table, and several chain type restaurants and fast food outlets such as Dairy Queen, Pizza Hut, Sonic, Subway, and Kettle as well as others.

Quanah includes Medicine Mound Depot Restaurant and Dutch's Restaurant, in addition to chain restaurants, fast food, and others.

Besides all the already listed places there are other locally owned restaurants and cafes in all the area towns within a hour drive or less in Crowell, Matador, Vernon, Quanah, Quitaque, Turkey, Memphis, and Wellington. In Floydada west 1 hour is Leonard's, who is family owned and been in business for years, and a little burger place "Dixie Dog" where a junior burger is big, but an order of regular fires is huge. But if you find yourself in Benjamin, 1-hour drive southeast check out the Quilt Store for those who quilt, want to, or just like to look at quilts before or after you have eaten in town.

Two hours drive you will find just about any kind of food you should desire. Malls offer shopping with the standard to the unique. The typical chain restaurants and shops are there to choose from, but here are a few of the more unique places found. In each city there are unique activities for leisure living with a few included here also.

Amarillo

The Big Texan Steak Ranch World-renown restaurant famous for a FREE 72 oz. Steak if eaten with all its trimmings in 1 hour. I-40 East, Ex.74 800 657 7177 www.bigtexan.com
Green Chili Willy's Grill Voted best in 2008 for their Chile Willy's Chicken Fry. Known for 100% hand cut Angus steaks grilled to perfection! 13651 I-27 (between ex.112 & ex.113 on East access rd.) (806) 622 2200

Sakura Japanese Steakhouse and Sushi Bar Teppan-Yaki, Sushi, and full service bar. 1 mile South of I-40 on Soncy, Ex.64 (806) 358 8148)

Dyer's Bar-B-Que Traditional barbequed ribs and brisket with all the mouth watering hefty sides served authentically Texas-Style. I-40 & Georgia Wellington Square (806) 358 7104

Belmar Bakery and Café baked bread and pastries since 1965. Made from scratch daily cookies, cakes and soup too. Mon/Sat 6 am to 6 pm 3325 Bell St. Next to Stein Mart (806) 355 0141

KN Root Beer Drive In Serving folks nation wide who have to come back every year for homemade Frosted Mug ROOT BEER & Burgers!! Old fashioned curb service since 1968. 3900 Olsen (806) 355 4391

Barnaby's Beanery Traditional American fare & distinct Southwestern flare. 3811 West 6th Ave. "HISTORIC ROUTE 66"(806) 358 6998

Blue Front Café Home style cooking since 1946. Best breakfast in town!! Located on “HISTORIC ROUTE 66”. Serving breakfast & lunch with FREE ice cream daily. 801 S. W. 6th Ave. (806) 372 0659

La Fiesta Grande Perfectly prepared Mexican cuisine. Brunch Sat. & Sun. 10 a.m.-2 p.m. 45th & Coulter (806) 352 1330 or I-40 & Ross

Red Breaks Ranch Located just northwest of city, hosts authentic chuck-wagon meals daily. Visitors ride on covered wagons then watch working cowboys prepare authentic breakfasts or dinners.

Palo Duro Indian Trading Co. 2801 I-40 East Ex.72A (806) 374 4364

The Village Antique Mall 2711 Stanley St. www.thevillageantiquemall.com (806) 372 4472

The Secret Place (Specialized women’s wear & accessories) 3690 Soncy (between 34th & 45th) (806) 467 9800

Panhandle Art Center (original art) 3701 Plains Blvd. Gallery 135 (806) 351 2322

Cavender’s Boot City 7920 I-40 west at Coulter (806) 358 1400 online shopping at cavenders.com

Dong Phuong Oriental Food (Asian Market) 2218 Amarillo Blvd. (806) 371 0914

Georgia Street Mall 34th & Georgia St. (Under one roof 16,000 sq. ft. Shop crafter’s booths and one of a kind antiques) (806) 355 5658

Lubbock

Gardski’s Restaurant is the oldest restaurant structure in Lubbock. The Humphries family built it in the 1920’s. Enjoy casual dining from burgers to steaks and don’t miss the unique photographs of Lubbock, Texas Tech University and the rich history of West Texas that grace the walls of the restaurant.

Beef O’Brady’s Family Sports Pub, Beef O’Brady’s Happy Hour is 3 pm-6 pm Monday thru Friday Open Sun. thru Thurs 11 a.m.-10 p.m., Fri & Sat 11am-11pm. Located at West Wind Shopping Center, 5510 4th Street, (806) 792-3337

Shogun Japanese Steak House For truly authentic Japanese cuisine, Shogun is in a class of its own. Flames, comedy and banter are all part of the experience at Shogun. We offer steaks, poultry and seafood prepared to perfection by your own highly skilled chef right before your very eyes. The atmosphere is very entertaining and exciting. Beer, wine and liquor served. Open for lunch and dinner. Open Sun-Thurs 11am-2: 30pm and 5:30pm-10pm, Fri-Sat 11am- 2:30pm and 5pm-11pm. 4520 50th St., 806-797-6044.

Fortune Cookie. Serving Lubbock since 1984! We serve exquisite traditional Chinese dishes and we are constantly adding new dishes to our menu. Chinese food appeals to the senses through color, shape, texture, aroma and taste. Our style of Chinese food is the perfect compliment to your business lunches, meetings, rehearsal dinners, church gatherings, receptions and family reunions. Open Mon-Sat 11am-9pm; Sun 11am-3pm. 7006 S University and Loop 289. 806-745-2205.

Sugarbaker’s Café & Bakery A classy, casual café that serves delicious confections. Open for lunch. Catering and delivery are available. 4601 S Loop 289, Suite #1, Salem Village, 806-797-0794.

Jazz: A Louisiana Kitchen It’s always Mardi Gras at Jazz! Featuring New-Orleans-style specialty drinks like Rum Runners, The Bermuda Triangle and The Mardi Gras Rita. Daily drink and shot specials all day. Happy Hour Everyday from 4 p.m.-7 p.m. Full menu and live music in

a friendly, casual and fun New Orleans-style atmosphere. It's Bourbon St, right here, on 19th! 7 days a week 11am-2am. www.jazzkitchen.com. 3703- C 19th St, 806-799-2124

Cactus Theater Discover the Magic! Live concerts and musical productions. Restored to its 1940s décor, the Cactus Theater brings an air of nostalgia to Lubbock with live music, concerts and theatrical productions. The Cactus Theater comfortably seats 400 people. Great for specially designed shows, for class reunions, parties and other group meetings or get-togethers. 1812 Buddy Holly Ave., in the Historic Depot Entertainment District, Tickets: 806-762-3233.

Stars & Stripes Drive-In 5101 Hwy 84 806-749-SHOW Stars & Stripes Drive-in movie theater. You use your own stereo equipment in your vehicle or a portable radio. New releases shown. Double features \$5 per person. Dine during movie. We serve the Original Chihuahua

La Diosa Cellars Three generations of wine making in the family gives La Diosa Cellars a unique approach to this winery. The eclectic atmosphere has a wonderful flow with the cultural decoration and bistro menu.

Cap-Rock Winery is a favorite place for special events and gatherings. Tour the winery and sample the flavorful wines in an elegant tasting room.

Mama Rita's Border Café A great little Tex-Mex Café with a cool patio, tasty margaritas and a daily lunch special.

Bigham's Smokehouse Three great Lubbock locations ready to serve some of Bigham's legendary BBQ.

Spanky's a Lubbock tradition with mouth-watering burgers and famous cheese sticks.

Triple J Chophouse and Brew Co. In the historic Depot Entertainment District, relax in an eclectic atmosphere and enjoy freshly made food with freshly made brew.

Hodgepodge Design: Specializing in distinctive gifts, jewelry, home décor, vintage furniture, stationery and invitations.

Holly Hocks features Vera Bradley soft luggage and accessories, Pine Cone Hill bedding and sleepwear, bath and body treats, Decorative accessories, baby gifts, clothing, Tyler candles and Lynn Haney Collection of handcrafted Santas.

Hulla B'lu is located in the heart of the historic Depot Entertainment District. You will find yourself in a shopper's paradise surrounded by fresh ideas and unique and unexpected treasures.

Find antiques, hand-painted furniture, interior accessories and gifts in a colorful atmosphere

KK's Craft Mall, Gift and Collectible mall is the place where local people come to sell their wares, and customers from near and far come to get the best merchandise of the fairest prices.

Lemon Tree is a unique gift shop offering china, crystal, and accessories for the home, adorable baby gifts and many other wonderful surprises.

Uncommon Graphics offers unusual prints, gifts and novelty items, specializing in custom framing.

Wineries Offering wine tasting and tours: La Diosa Cellars, Cap-Rock Winery, Llano Estacado Winery, McPherson Cellars Winery and Pheasant Ridge Winery. All are located in the Lubbock area.

Looking for western stores, Lubbock has several including, Boot City, Branding Iron, Cavender's, Coyote Candle Company, Dollar Western Wear, Flint Hat Shop, Hat Creek Trading Company and Luskey's/Ryon's Western Wear.

Wichita Falls

Fats Mc Brides Steak House 4537 Maplewood Avenue Wichita Falls, Texas 76308-4609.

This place serves up an American fare known for their steaks.

McBride Land and Cattle Company 501 Scott Avenue, Wichita Falls, Texas 76301-2503

McBride Land And Cattle Company serves an American menu especially known for steaks.

Expect the average entrée to cost between \$12 and \$20, and visitors are quite appropriate when dressed casual.

Japanese Steak House Samurai 2611 Plaza Pkwy #304 Wichita Falls, Texas 76308-3872

If you go to Japanese Steak House Samurai, you'll find a steakhouse that serves up Japanese.

La Victoria Panaderia 1213 11th St. Mexican pasteria baked fresh daily, tamales and fresh flour tortillas every day. A little touch of Mexico in Wichita Falls.

Castaway Cove Water Park is open mid May through Mid September A tropical themed paradise for the whole family. Features water slide off 40 and 50-foot towers, Lazy River floating stream and Tidal Wave Pool.

Field of Honor Paintball Games Have fun playing the game of Paintball safely and legally.

The Plex—Go karts, bumper boats, 2 world-class 18-hole mini golf courses, lazer trek and biggest outdoor batting cage facility in Texas. Huge video arcade with kiddie rides and ball crawl, large picnic pavilions, party room and on-site restaurant.

River Bend Nature Center Watch a plethora of emerging butterflies in the chrysalis state in the Ruby N. Priddy Butterfly and Nature Conservatory. Center offers over 15 acres of trails, wetlands and ponds to enjoy.

Village Bowl Sixteen high quality lanes with easy automatic scoring for family friends and league bowling. Join a league, have a party or just bowl for fun.

Skate Whirl Rent skates or use your own. 4208 Jacksboro Hwy. 940-767-1552

Wichita Falls Vineyards and Winery Nestled between the rustling waters of the Wichita River and Buffalo Creek, the winery produces wines that capture the unique spirit and history of the region from the Wichita Indians to today's international mix of culture and lifestyles. The inventory includes reds, whites, blush, dessert wines, chocolate wine sauces, wine candles and more. Their quaint tasting room and gift ship are open daily.

Minnetonka Moccasins and Sandals Large selections of jewelry, pottery, art and prints, jackets, baskets, rugs, decorative items and gifts. 711 Indiana in Historic Downtown.

Eastern Treasures—Unique treasures from the Far East. Antiques, jewelry and decorative accessories. www.easttreasures.com.

Somewhere in Time European and American antique furnishings, glassware, porcelain, pottery and collectibles, 615 Ohio www.somewhereintimestx.com

Mansion II Antique Mall One of Wichita Falls' largest malls. Antiques-collectibles, vintage jewelry, books, glassware, paper, military, furniture, large vintage hunting and fishing collectibles.

Turtle Creek Trading Co. is new to Wichita Falls but it hasn't taken long for this unique store to draw a crowd. The Indian and Southwest artifacts and artwork that adorn the walls and aisles are displayed with the respect due these beautiful pieces. 711 Indiana

Red River Harley-Davidson. Now you can rent before you buy from Texoma's best place to buy a motorcycle. US 287 N. at City View Dr

GottalottaRugs Fashion for floors from fun to formal. 3916 Kemp Blvd, behind the Olive Garden.

Stomping Ground Studios Visitors are encouraged to enjoy the beauty of Jack Stevens work while here. All created in bronze, his sculptures include the Wee-Chi-Tah, one of America's largest sculptures that features the First Nation of America. Jack and his Australian Shepherd, Maggie, love to have visitors to his studio, where more of his astonishing art can be found. He only asks that you call first, as he'd hate to miss you when you come. 940-438-2330

For the gambler

There are casinos just north across the Red River. Kiowa Casino has over 900 Vegas Slots, table games (Black Jack, Three Card Poker, Ultimate Texas Hold Em, Roulette and more) fine dining at Devol, OK and Comanche Red River with Las Vegas-style gaming, over 1200 machines, 15 Televisions throughout, Largest Bar in Texoma www.crrcasino.com

Abilene

Lytle Land and Cattle Co. 1150 E. South 11th St. Abilene, TX 79602 (325) 677-1925. The food is delicious, the service is good, and the \$1.00 margaritas on Monday nights make Lytle the place to be! We really think it has the best steaks in town without a doubt!

Fuji Japanese Steak House 3110 S 27TH St Abilene, TX 79605 (325) 695-9233 Great atmosphere, chefs always give a good show and make it fun and entertaining.

Buffalo Wild Wings 4401 Ridgemont Drive Abilene, TX Award winning wings 14 signature sauces. Great sports atmosphere with award winning wings including 14 signature sauces Wall-to-wall big screens featuring all the games, a fantastic beer selection, award-winning chicken wings with Honey BBQ, Spicy Garlic and Blazin'. There's even Buzz time Trivia for all you trivia buffs out there. Come check out Wing Tuesdays or Boneless Thursdays.

Harlow's Smoke House 2002 N Clack St Abilene, TX 79603 (325) 672-2132 Harlow's is a GREAT place to eat. You can order from the menu or do the 1, 2, or 3-meat plate and pick whatever sides!! The atmosphere is very rustic and original compared to most places now days. The restaurant sets in an old train car.

Cahoots Catfish and Oyster Bar 301 S 11th St Abilene, TX 79602 Has been written about in the Texas Highways Magazine

Mary's Paeteria Inc 601 S Treadway Blvd Abilene, TX 79602 (325) 670-9960 This is one of many locations for Mary's. Try the traditional Mexican ice cream and they have many unique flavors such as popcorn, cactus, and cantaloupe. All wonderful!

Bird watching and nature trails can be done at Abilene State Park, Big Country Audubon Society and Cedar Gap Farm.

Bowling—at Abilene Bowling Lanes, Abilene Christian University, Whitewood Lanes, and for the retired military person there is Dyess Bowling.

Golf enthusiast can make use of the public courses at Diamondback, Maxwell Municipal and Willow Creek. Disc Golf is available at Cal Young Park, Wildcat Disc Golf Course and Hill Hair Park. Miniature Gold is available at Play Faire Park, one of the oldest continuous operation miniature golf courses in Texas (served the area since 1947) and Putt Putt.

IF **movies** are what you want while in Abilene, there are six theaters, one being the Town and country Drive-In. The others are all multi screen theaters.

Billiards is available at Billiard Plus, Rack Daddy's and Slix Billiards.

Recreational Areas and Facilities

Living in Paducah away from the “rat race” of the big city does not mean there is nothing to do; just the opposite as Paducah and areas close by are filled with recreational opportunities. Paducah has its own fitness center where the members have access 24-7 to the workout center and equipment. The center offers state of the art equipment for cardiovascular workouts, to weight/strength building or just keeping your already fit body in top shape. Also available are tanning beds.

The Paducah Seniors’ Center offers hot nutritious meals 5 days a week to those who call and make reservation ahead and to those they service with one of their 3 “meals on wheels” programs. Also available through the center are use of some exercise equipment, and games (card and table games) with others, or just a time of visiting in the nicely furnished commons area. Information is available through the center to the citizens on the 211Texas which is a free 24-7 link to health and community services, home medical services available, social security program participation information, and free attorney assistance hotline information. The home health care nurses come once a month and give free blood pressure, and blood glucose checks. Other professionals such as the county agent give programs monthly for the citizens’ information.

The City Library located in the Cottle County Courthouse basement is open daily Monday thru Friday from 10 am until 5 pm. It houses over 14,300 books, 330 audio materials, 370 video materials and 20 serial subscriptions. The library has a video/DVD check out/loan program with up to date movie releases. The Paducah library has five computers with high speed Internet access for the citizens’ use. “The Friends of the Library” organization was responsible for the grant that made the purchase of these computer as well as other needed items such as additional shelving, lighting, and computer updates. The “friends” also are responsible for the children’s summer reading program, purchase of a TV, carpeting and getting the reference room established and operational. The “friends” membership is open to anyone who wishes to support the library with yearly or lifetime membership.

The Paducah Country Club has recently undergone a major remodel. All the greens have been rebuilt and have new grass. Addition irrigation was added, and ponds and stream area either added or rebuilt. The 9-hole golf course has newly rebuilt tee boxes. The swimming pool area was resurfaced. The tennis courts are ready to be used by members as well as the Paducah ISD tennis teams. In the near future the clubhouse will be remodeled, a new bar and grill built, and a beer and wine license has been applied for. Also in the area are golf courses at Matador (between Matador and Roaring Springs), Childress Country Club that also has pool and tennis courts, and Quanah. Childress City Park (Fair Park) has a beautiful lake, picnic area, walking trails, swimming pool, tennis courts and a playground. There is a historical marker in the park for the Goodnight Trail, an extension of the famed Goodnight-Loving Trail over which herds of cattle trekked to market.

Paducah has 3 parks; the largest includes the city-operated swimming pool, that offers swings, climbing equipment and such for the children, while adults can sit on benches or at picnic tables

and visit/relax while taking in the quiet serene views or at night just enjoy the star filled sky. The Matador Wildlife Management Area a few miles outside the city is a 28,000-acre area on the Middle Pease and South Pease rivers north of Paducah. The area offers bird watching, nature study and photography opportunities as well as education for landowners concerning wildlife management. The Matador Wildlife Management Area (MWMA) is located in the central Rolling Plains of Cottle County, Texas. Using Pittman-Robertson funds, the 28,183-acre MWMA was purchased by the Texas Parks and Wildlife Department in 1959 for the purposes of wildlife research, wildlife management, and public use. With over 70 miles of road, some only usable with 4 wheel drive vehicles, the public can observe the sites of the preserve, or stop and hike the scenic areas.

Habitat types include mesquite uplands, shinnery oak, rangeland and gravelly hills consisting of red berry juniper and mesquite mix, and bottomland. Public use activities include hunting, fishing, hiking, bird watching, camping, horseback riding, nature study, and photography. All visitors must register upon arrival at the registration building (open 24 hours) and check out when leaving. Tours of the MWMA can be arranged for groups by contacting the Area Manager. Tours are not available during public hunts.

Numerous wildlife species occur on the MWMA, including bobwhite quail, Rio Grande turkey, scissor-tailed flycatchers, Bullock's orioles, Mississippi kites, roadrunners, mourning doves, painted buntings, western diamondback rattlesnakes, western massasauga rattlesnakes, Texas horned lizards, ornate box turtles, mule and white-tailed deer, coyotes, bobcats, and feral hogs. Rare species sighted on the area include vermilion flycatchers, pyrrhuloxia, mountain lions, pronghorn, and javelina.

Students, teachers, and scientists use the MWMA for instructional, educational, and research purposes. There are opportunities for adults to volunteer to help youth learn gun safety, shooting of different guns in different types of situations and even hunt with a youth before the official hunting season opens.

Also within one hour of Paducah are several privately owned lakes that offer leases when available with some that have cabins for sale. Some offer day fishing leases as well. Cottonwood out of Quitaque, Horner out of Matador, and another one outside Wellington are examples of such opportunities to fish and relax at a privately owned lake and possibly in your own cabin/lake house. When on the road between Dickens and Crosbyton take time to stop at Silver Falls where there is a roadside park at the bridge crossing White River. Take a scenic walk or just relax while viewing nature before coming on home to Paducah.

New to Paducah is a non-profit organization called "Hunting with Soldiers" which is a Big Country Support the Troops program. It was started with the sole purpose of taking soldiers as well as wounded veterans hunting for free. Their main focus is on those who are coming back from Iraq and Afghanistan to allow the mental healing that getting back into outdoors allows the soldiers to do. They have a house that is free to them while they hunt on land at no cost to them. There are wheel chair ramps supplied for most all the hunt stands. If they do not own a gun or they cannot have it due to restrictions on base, the organization plans to have a selection of weapons for the veteran/soldier to use while here. They will be taken to the range, help sight the

weapons and then be taken to the field so they can hunt. According to several of the active duty soldiers and one wheel chair bound veteran, the hunt was the best healing time they have had.

For those young at heart there is a roller skating rink located in Childress. Wellington Activity Center has bowling. Wellington also offers racquetball, indoor walking track, and fitness center. There is gymnastics offered in Quanah. Childress and Memphis also have health club/fitness centers.

Several area fairs are in the area, usually happening in the fall. The Panhandle South Plains Fair in Lubbock, the Tri-State Fair in Amarillo, the Texas Oklahoma Fair in Wichita Falls and the West Texas Fair and Rodeo in Abilene are the major fairs. For those up to the drive of 4-5 hours, there is always the Texas State Fair in Dallas. Along the same theme are all the stock shows that take place in every town from big to small. The youth project and animal shows, Paducah's being in January is just one of many. Matador/Roaring Springs has the Motley-Dickens Old Settlers' Reunion and Ranch Rodeo held annual since the 1920's in the August of each year. Crosby County has their annual Rodeo the 2nd weekend in August each year, while Roaring Springs hosts Cowboy Camp Meeting and team Roping in May. Roaring Springs also has the Motley County Fair in October, and the Motley County Junior Rodeo is held in Matador.

In addition to what is listed in Paducah and one hour drive from here there are skating rinks, bowling, billiards, golf, tennis, movie theaters, including 5 drive in movie theaters, and horse stables that offer horse backing riding trails on your horse or one of theirs available in all the surrounding larger cities. Ice-skating can be found in Wichita Falls and Amarillo where they have a semi pro hockey teams.

Other recreational areas close to Paducah or less than 2 hours drive include:

Childress City Park (Fair Park) has a beautiful lake, picnic area, walking trails, swimming pool, tennis courts and a playground. There is a historical marker in the park for the Goodnight Trail, an extension of the famed Goodnight-Loving Trail over which herds of cattle trekked to market. **Childress** has recently been awarded a grant of \$239,908 for expansion of its all terrain vehicle and motor cross park located 8 miles northwest of Childress on US hwy 287. The park has 25 miles of trails across 600 acres. Also near Childress is ***Baylor Lake*** with a surface area of 610 acres, maximum depth of 50 ft. It along with ***Childress Lake*** which is adjacent are boat accessible and offer water sports, camping and excellent fishing for catfish, crappie and perch. **Lake Pauline** a 612-acre lake of 16 ft. dept is located 6 miles east of Quanah. It is one of the nicest campsites around with plenty of RV hooks-ups, a pavilion, bathrooms and a bait house. There's a covered deck overlooking the water, with picnic tables. A concession stand provides a variety of goods. In addition to camping, and RV hookups, there is swimming, boating, skiing, picnicking and fishing for crappie and Florida bass.

Wellington Picnic Areas and Hiking paths along Salt Fork of the Red River at three bridges near town: U.S. 83 bridge north, F.M. 1547 bridge northwest, and Texas 203 bridge east. Indoor track, ball courts, weight room, bowling and arcade at Wellington Activity Center, 505 Corsicana St., 806/447-0110. Indoor and outdoor arena, picnic area and playground at Wellington Fairgrounds, First St. at U.S. 83, 806/447-2544. Camping at Pioneer Park at U.S. 83 Bridge, six miles north of Wellington. Contact Chamber of Commerce at 806/447-5848

Caprock Canyons State Park located outside Quitaque, a little more than an hour drive from Paducah, was opened in 1982. It consists of 15,313.6 acres (including the Trailway, a 64.25 mile Rail-to-Trail conversion, acquired by donation in 1992 from a Railroad entrepreneur). This acquisition added recreational adventure, stretching from the western terminus at South Plains up on top of the caprock escarpment to the eastern terminus of Estelline in the Red River Valley. This multi-use trail (hike, bike, and equestrian), opened in 1993, stretches the park through Floyd, Briscoe, and Hall counties crossing 46 bridges and running through Clarity tunnel, one of the last active railroad tunnels in Texas. The 64.25 miles of the Trailway are open to the public from Estelline to South Plains.



Caprock Canyons is home of the official Texas State Bison Herd.

The escarpment's scenic canyons were home for Indians of several cultures, including the Folsom culture of more than 10,000 years ago. The region's historic era began when Spanish explorer Coronado traveled across the plains in 1541. After 1874, Anglo settlement began, counties were organized, and ranches were established. Famed cattleman Charles Goodnight moved cattle into Palo Duro Canyon in 1876. In 1882, he bought vast areas of land for John G. Adair, who became owner of the noted J. A. Ranch. The land on which the park is located was included in the purchase. A railroad was built into this area in 1887. Theo Geisler, who died on August 15, 1969, acquired most of the land that now lies within park boundaries in 1936. The state purchased the land in 1975, and the park's Lake Theo was named after Geisler.

The park offers day-use and camping facilities; hiking; horseback riding; mountain biking; boating on a no-wake lake (120-surface-acres, 30' when full); fishing; lake swimming; a scenic drive; guided tours; and seasonal concessions offering horse rentals. Almost 90 miles of multi-use trails range from the very difficult in rugged terrain to trails with less than 3% grade. About 25 miles of the trails include cliffs and drop-offs, with steep climbs and descents that are recommended only for the experienced equestrian and mountain bike riders. When visiting Caprock Canyons State Park, be sure to check out the recently completed audio driving guide to the park. It's like having a tour guide on your own schedule and it's free! The audio guide is available for checkout, at the park headquarters, on tape or CD (\$5 deposit). There are 13 trails in all, (some still under construction), including 6 along the Trailway, which are each approximately 10 miles long and provide parking lots at each trailhead. Water is usually available for animals along the trails, and some potable water is available at selected sites; but is it highly recommended that personal water is carried for each adventurer.

Copper Breaks State Park consists of 1898.8 acres, 12 miles south of Quanah or 9 miles north of Crowell, in Hardeman County. The park was acquired by purchase from a private owner in 1970 under the State Parks Bond Program and was opened in 1974. Prior to the arrival of early

settlers, this region was the realm of the Comanche and Kiowa tribes. It remained so until the pressures of a new civilization forced the Indian onto reservations in nearby Oklahoma. Near the present park area, Cynthia Ann Parker was recaptured from a band of Comanche Indians and subsequently reunited with her relatives. Cynthia Ann had been captured as a small child by a raiding party near Mexia and grew up among the Indians. Her son, Quanah Parker, was to become the last great war chief of the Comanche nation. After being reunited with her relatives, Cynthia Ann Parker did not adjust well to the ways of the settlers and longed for the free life style of the Comanche. She died in a relatively short period. Medicine Mounds, located 10 miles east of the park on private lands, were important ceremonial sites of Comanche Indians. The famous Pease River Battle Site, in which Cynthia Ann Parker was recovered from Comanches in 1860, is located 3 miles east of the park. Activities include camping, picnicking, boating, fishing, mountain biking, swimming, wildlife viewing, backpacking, kite flying, summer educational/interpretive programs, horseback riding (horse rental not available), astronomy, and natural and historical exhibits. A portion of the official Texas longhorn herd is maintained at the park. **Area Attractions:** Nearby attractions include the Hardeman County Historical Museum in Quanah and the Firehall Museum in Crowell, which maintain displays and exhibits of artifacts and other historical items of early Texas. On State Highway 6, between Quanah and the park, one can observe prominent hills to the east that make up Medicine Mound, a ceremonial and religious site of the Comanche. The mounds are located on private property, and trespassing is prohibited.

Campsites & Other Facilities: Facilities include restrooms with and without showers; campsites with water; campsites with water and electricity; equestrian campsites with water; a primitive camping area; a group camp area with campsites with water; a group picnic pavilion with adjacent group picnic area; a meeting room (use times negotiable; 35 person capacity); picnic sites; a swimming beach; a boat ramp; a boat dock; a fishing pier; a trailer dump station; playgrounds; an interpretive center; and 2 lakes (60 acres and 10 acres). The park has 10 miles of trails: 9.5 miles for back packing, 9.5 miles for mountain biking and equestrian, .5 mile nature trail, and all 10 miles may be used for day hiking. The equestrian camping area has campsites and two, 5-foot tying rails. Equestrian enthusiasts can enjoy a 9.5-mile, round-trip trail over varying terrain. There is a large parking area and water available for horses. Water and restrooms are nearby. Nature and historical books, sodas and ice, firewood, limited fishing supplies, and souvenirs are available at the Texas State Park Store. Horseshoes, basketball, and volleyball equipment may be rented at park headquarters during office hours. Honor boxes, located at park headquarters and each restroom, collect entrance and camping fees after hours.

Natural Features: The Park features rugged, scenic beauty with mixed grass/mesquite-covered mesas and juniper breaks. North Texas wildlife abounds at Copper Breaks State Park. Roadrunners, great blue herons, many species of ducks, meadow larks, quail, doves, cardinals, owls, flickers, bluebirds, kites, hawks, and mockingbirds are just a few of the many species of birds found in the park. Most species of mammals in the park are best viewed during the early morning and late evening hours. Most common are mule deer, rabbits, raccoons, armadillos, opossums, bobcats, porcupines, and coyotes. Numerous frogs, turtles, and lizards can be seen and an occasional horned toad. Lake Copper Breaks is stocked with rainbow trout each winter. Wildlife and bird checklists are available at the park headquarters.

Greenbelt Reservoir completed in 1967, is a 1900-acre impoundment located five miles north of Clarendon 2,025-acre reservoir on Salt Fork of Red River offers rare water-recreation

pleasures to large area of the Texas Panhandle. Also boating, water-skiing. Five miles north of Clarendon off Texas 70.

Palo Duro Canyon State Park consists of more than 20,000 acres in Armstrong and Randall Counties, south of Amarillo in the Texas Panhandle. Private owners deeded the land in 1933. From 1933 until 1937, the Civilian Conservation Corps (CCC) sent six companies of young men and military veterans to Palo Duro Canyon to develop road access to the canyon floor as well as the visitor center, cabins, shelters, and the park headquarters. The hard work of these dedicated individuals was important in the establishment of Palo Duro Canyon State Park that officially opened on July 4, 1934. Man has inhabited Palo Duro Canyon for approximately 12,000 years. The Clovis and Folsom people first resided in the canyon and hunted large herds of mammoth and giant bison. Later on, other cultures such as the Apaches, Comanches, and Kiowas utilized the canyon's abundant resources. Early Spanish Explorers are believed to have discovered the area and dubbed the canyon "Palo Duro" which is Spanish for "hard wood" in reference to the abundant mesquite and juniper trees. However, an American did not officially discover the canyon until 1852 when Captain Marcy ventured into the area while searching for the headwaters of the Red River. In 1874, Palo Duro Canyon was a battle site during the Red River Wars. Col. Mackenzie, under orders from the US Government, apprehended the Native Americans residing in the canyon by first capturing 1,400 horses and then later destroying the majority of the herd. Unable to escape, the Native Americans surrendered and were transported to reservations in Oklahoma. Then, from 1876 until 1890, most of the canyon belonged to the J.A. Ranch and was operated by Col. Charles Goodnight. Cañoncita Ranch added to Palo Duro Canyon State Park. Texas Parks and Wildlife has purchased 2,036 acres adjacent to Palo Duro Canyon State Park along the park's southern boundary.

Activities: Park activities include camping, horseback riding, hiking, nature study, bird watching, mountain biking, and scenic drives. While in the park, stop by and enjoy our Visitor Center located on the Canyon Rim. This rustic native stone building was constructed by the CCC in 1934 and houses a Museum and Museum Store. The store is located in the Visitor Center and features books, potter, jewelry, and educational items pertaining to the Canyon

Outdoor Theater Productions:

The Official Play of the State of Texas returns each season in June to the Pioneer Amphitheater in beautiful Palo Duro Canyon State Park. In this family-friendly show, set against an authentic tapestry of history, the show's fictional characters bring to life the stories, struggles and triumphs of the settlers of the Texas Panhandle in the 1800's. Song and dance abound - and a generous helping of good ol' Texas humor too - with spellbinding lighting, special effects and fireworks. Come early and enjoy a delicious bar-b-que dinner served on our covered patio. For more information contact the Pioneer Amphitheater Box Office at (806) 655-2181 or www.texas-show.com.

Equestrian:

Come and experience Palo Duro Canyon up close and personal, the way the cowboys did: On Horseback. The Old West Stables, located inside the canyon, offers guided tours to Timber Creek Canyon and the famous Lighthouse formation. Other services offered include wagon rides, campfire breakfasts, souvenirs, and a snack bar. Bring the whole family! Reservations are required. Please call Old West Stables at (806) 488-2180

Fort Griffin Historic Site: Camp, fish and stargaze among the ruins and restored building of the old fort on the Clear Fork of the Brazos River. The home pasture of the Official State of Texas Longhorn Herd is here on the grasses of the rolling plain. As one in the line of frontier defensive

forts, Griffin held command over the Sothern Plains during an era of hard men, fast women and tough times. Fort Griffin is located near Albany, a little more than 1 hour drive from Paducah.

Lake Mackenzie 896 acres in scenic and historic Tule Canyon; offers facilities for picnicking, camping, RV hookups, boat ramps, swimming area. Water skiing; fishing for largemouth bass, walleye, striped bass, and catfish. Access 12 miles northwest of Silverton via Texas 86 west, Texas 207 north.

Buffalo Spring Lake: Small 200-acre lake on Double Mountain Fork of Brazos River is very popular for fishing, boating, picnicking and weekend outings. About 9 miles southeast of Lubbock via U.S. 84 south, F.M. 835 From Loop 289: FM 835 (E. 50th St) E 5 mi. On Buffalo Springs Lake. Wheeled-camper sites w/electric, water & sewage 32; w/water & electric 46; 20 acres tent of sites w/out hookups. Limit 14 days. Covered shelters 4, “party” house 1. Dump stations, toilets, showers, grocery, marina and restaurant. Fishing, boat ramps, docks, sandy beaches, swimming-lake, and volleyball court. Audubon Society nature trail, hiking and bike trails, nature trails, scenic views.

White River Lake 1,808 acres, supplies water for Crosbyton, Post, Spur and Ralls; features camping areas, lakeside cabins, boat launch and rental, picnic areas and fishing supplies. On tributary of Salt Fork of the Brazos about 16 miles southeast of Crosbyton via F.M. 651 south, F.M. 2794 east. Accessible from Post, Crosbyton and Spur.

Altus Lake impounds the North Fork of the Red River, which is the boundary between Greer and Kiowa Counties. This boundary was contended between Oklahoma and Texas and in 1896 the U.S. Supreme Court decreed that Greer County, which today makes up Harmon, Jackson and Greer Counties, belongs to Oklahoma. The reservoir and adjacent Quartz Mountain Lodge provide a major recreation spot in southwest Oklahoma. The park offers a variety of recreational activities, and the rugged granite hills and fascinating geologic history promise a unique experience for the hiking enthusiast. The Altus-Lugert public hunting area consists of approximately 3,600 acres at the upper end of the lake. Lands planted with maize, millet, and winter wheat provide food for the wildlife. Quail, waterfowl, turkey, crow, and predator species are available for hunting. Trout season is November 1 through March 15 and fishing is available from both sides of the entire stretch of the lake with best access along the entire length of the north shore and near the dam on the south side. Camping and cabin facilities are available.

Altus City Reservoir has a fishing dock, picnic area, and outdoor grills. It also has group facilities, playground, jogging trail and more. Located in Southwest the lake is approximately 6,500 acres of open water. Fishing is available year-round. Several boat ramps and camping facilities are available.

Altus Speedway is a 1/3-mile asphalt oval racetrack for stock car racing. Perfect for an evening of family fun. Days/Hours Open: Sat evenings from Apr-Oct. 3 miles N of Altus on Hwy 283.

Quartz Mountain Resort/ Lodge. 6,260 acre lake and 4,284 park acres has 118 guest rooms and suits, 8 two bedroom cabins with kitchenettes, mountain view bunkhouse (64 person dormitory) a performing arts complex, 5 performing arts pavilions, and an outdoor amphitheatre (capacity of 200). Additional facilities include boat ramps, picnic areas, designated campsites, group shelter, restrooms, swimming beach, electric outlets, playground, marina, cabins, enclosed fishing dock, and swimming pool. The area also has restroom/showers (2 handicap accessible), sanitary dump stations, nature center, hiking trails, sand dunes, miniature golf and water sports including paddle boats. Quartz Mountain Golf Club is located at the main entrance to Quartz Mountain State Park. It is an 18-hole par 71 course at the foot of the rugged granite hills at the tip of scenic Lake Altus.

Diversión Lake is a 3,419-acre impoundment on Wichita River (tributary of Red River). Popular for water sports and fishing, with record hybrid striped bass weighing in at 10.53 lb. About 27 miles southwest of Wichita Falls via U.S. 82/277 west to Dundee, then F.M. 2846 north; also accessible from Mankins, Electra and Vernon.

Lake Fort Phantom Hill Covers 4,246 acres with 29-mile shoreline. Encircled by paved highways, lake south of old fort ruins has numerous campsites, marinas and other facilities for water sports and outdoor recreation. Ten miles northeast of Abilene via F.M. 600; also accessible from Anson.

Lake Kemp at Wichita Falls is a municipal lake on Wichita River. Many campsites available around the 16,540-acre lake, as well as service facilities for boaters and fishermen. About 48 miles southwest of Wichita Falls accessible off U.S. 183/283 north of Seymour; also accessible from Vernon and Wichita Falls.

Lake Wichita Small 2,200-acre lake at south limits of Wichita Falls, popular for swimming, picnicking, weekend outings; on Holliday Creek. Fishing is excellent and lake record includes largemouth bass at 10.25 pounds.

Lake Kickapoo Popular water sports facility for large surrounding area covers 6,200 acres at spillway crest. Swimming, fishing, boating, water skiing, camping, and picnicking. On North Fork of Little Wichita River about 12 miles northwest of Archer City off Texas 25; also accessible from Wichita Falls

Cast Away Cove Water Park at Wichita Falls. Experience the wave of excitement at Wichita Falls' newest and only water park. A tropical-themed paradise for the whole family, features waterslides of 40- and 50-foot towers, interactive 'Kiddie Park,' Lazy River floating stream, Tidal Wave pool and more. Open during summer months, call ahead to confirm hours, prices, etc. Located on U.S. 287.

Wichita River Trails is 4.37 miles of connected trails stretching along the Wichita River from Lucy Park to Williams Parks. It is also connected to 1.55 miles of the Holiday Creek trails. Along these trails a visitor will find some of the most beautiful scenery in the city, peaceful and serene wooded areas that are alive with color, wildlife and all kinds of birds.

Wichita Falls has 38 parks offer outdoor recreation, including swimming pools, jogging trails, golf, tennis, picnicking and children's fishing pond. Lucy Park is a 170-acre park with log cabin, pool, Lucy Land Playground, duck pond, paved trail, pavilions, picnicking areas and rest rooms. River walk trail along Wichita River connects Lucy Park to the Wichita Falls.

Red River Speedway with a ¼ mile semi-banked asphalt oval track host exciting racing events from March through October. An ASA Member track.

Texoma Motor Speedway is dirt track racing on 1/10-mile and 1/5-mile banked clay oval tracks. Go Karts, MiniSprints, MiniStocks, Pro-4 Trucks, Mod-4Cars. Events run from March through November.

Lake Arrowhead State Park Water-oriented recreation featured at this 524-acre park. Visitors find campsites with/without hookups, rest rooms with showers, boat ramp and dump station. 18-hole disc golf course, fishing, swimming and water skiing. About 14 miles south of Wichita Falls via U.S. 281 south, F.M. 1954 east.

The Plex Entertainment Center in Wichita Falls Features go-karts, bumper boats, video arcade, two 18-hole miniature golf courses and more. Open Sun. – Thurs. 11 a.m.–10 p.m., Fri. 11 a.m. – midnight, Sat. 10 a.m.–midnight. 4131 Southwest Parkway. 940/696-1222.

Joyland Amusement Park in Lubbock A West Texas fun-filled tradition in the heart of Lubbock's popular Mackenzie Park recreation area. Joyland has great rides and attractions —

more than 30 in all — including water rides, roller coasters and junior rides like the carousel. Food, games and group outing facilities are also available. At 4th Street and I-27.

Apple Country at HiPlains Orchards where 6,000 apple trees furnish visitors with an opportunity to pick or purchase your own apples or pick goods from the unique gift shop, bakery or Country Café. The 20 year old orchard is comprised of 30 varieties of apples.

Legacy Play Village is a unique facility where children can play while learning about the long legacy of the South Plains. The village was designed and built by the citizens of Lubbock and the surrounding area. It has three picnic pavilions that are available for rent year round.

Mackenzie Park/Prairie Dog Town is Lubbock's largest recreation area and features a wide variety of fun for all ages. Among these activities are the recently renovated Meadowbrook Golf Course, a world-class size golf course, Joyland amusement park, and prairie Dog Town. Visitors can watch the little critters put on a show, or bring your horse and ride through incredible landscapes on the park's equestrian trails.

The Maize open September –November located at the At'l Do Farms east of Shallowater is a challenge of your wits to see if you can find your way through this human labyrinth. You can also take a hayride, pick a pumpkin, shoot the corn cannon and ride the cow-train. On weekends they have a rock climbing wall, roasted corn and BBQ.

Golf Courses and Driving Ranges in Lubbock include: Chaparral Ridge- nine hole regulation-length, Elm Grove Golf Club-18 hole championship layout, Meadowbrook Golf Course originally an 18-hole course has been expanded to 36 holes, The Rawls Course-designed for TTU, Reece Golf Course-18-hole course, Shadow Hills Golf Course-18-hole course that was redesigned in 1995, Stonegate Golf Course-18-hole course, Elm Grove golf course, and Island Oaks Golf Club.

Lake Abilene 1,612-acre park offers camping and trailer sites, picnicking, shelters, yurts, swimming pool, rest rooms and showers, hiking and fishing. Large grove of some 4,000 native pecan trees, now a favorite picnic area, was once a popular campground for Comanche Indians. About 15 miles southwest on F.M. 89. Admission fee. Park information: 325/572-3204. Reservations: 512/389-8900

Primetime Entertainment Center in Abilene is a 42,000-square foot facility featuring bowling, NASCAR simulators, Laser Tag, 3-D theater, bumper cars, billiards, arcade games, miniature golf, go carts and a restaurant.

Buck Creek Trails offers mountain bike trails. Abilene Bike Club membership is required to access the trails.

Bird watching and nature trails can be done at Abilene State Park, Big Country Audubon Society and Cedar Gap Farm.

Bowling—at Abilene Bowling Lanes, Abilene Christian University, Whitewood Lanes, and for the retired military person there is Dyess Bowling.

Golf enthusiast can make use of the public courses at Diamondback, Maxwell Municipal and Willow Creek. Disc Golf is available at Cal Young Park, Wildcat Disc Golf Course and Hill Hair Park. Miniature Gold is available at Play Faire Park, one of the oldest continuous operation miniature golf courses in Texas (served the area since 1947) and Putt Putt.

If **movies** are what you want while in Abilene, there are six theaters, one being the Town and country Drive-In. The others are all multi screen theaters.

Billiards is available at Billiard Plus, Rack Daddy's and Slix Billiards.

Also in **Abilene are motor sports** at the Abilene Drag strip, Abilene Speedway and Mesquite Hills MX Park.

Splash Amarillo This 14-acre water park offers cooling rides for summer visitors including a wave pool, speed slide, flume slides, a lazy river, arcade, kiddie pool area and concessions. There are sand and grass volleyball courts. One of Texas' largest privately owned amusement parks with more than 25 rides and 32 attractions, including miniature golf, arcades, bumper cars, Big Splash log flume, Fantastic Journey spook house, Shoot the Chute water ride, Raging Rapids water slide, Texas Tornado double loop roller coaster, food concessions and more.

Wonderland Amusement Park Thrill packed rides for adults and little ones. From the Texas Tornado roller coaster to a horse on the merry go round its family fun for all. New attractions added every year of its 50 years of operation. For hours and rates go to www.wonderlandpark.com or call 800 383 4712.

Wildcat Bluff Nature Center "Take a walk on the wild side" More than 600 acres of rolling grassland with nature trails, wildflowers, knee-high grasses and huge cottonwood trees. Outstanding place to see Texas Panhandle's ecosystem. Three miles north of I-40 on Loop 335. 2301 Soncy Rd. , Amarillo 806/352-6007. www.wildcatbluff.org.

Elkins Ranch Cowboy Morning Chuck-wagon breakfasts and suppers with Western entertainment (offered Apr. - Sept.) and horseback riding await visitors at this ranch perched on the rim of Palo Duro Canyon. Check with the ranch about guided Jeep tours available year-round

Amarillo Livestock Auction One of the largest privately owned cattle auctions. More than 100,000 head of cattle sold in the auction ring each year.

Drive In Theaters within 2 hours or less drive of Paducah

Valley-Quitaque-Turkey operates during the summer months until winter, and opened at lunch time—eat in or take out

Rule, TX about 1 ½ hr...check website for drive in theaters for more information

Town and County, Abilene

Sandel Drive In Theatre, Clarendon 1 ½ hr northwest on 287

Stars & Stripes Drive-In, Lubbock 5101 Hwy 84 806-749-SHOW Stars & Stripes Drive-In Movie Theater. You use your own stereo equipment in your vehicle or a portable radio. New releases shown. Double features \$5 per person. Dine during movie.

Wellington Ritz Theatre Wellington (not a drive-in, but the restored Ritz) offering movies and special theater performances on Sunday afternoons.

Performing Arts

In Paducah there are not the opportunities that would typically come to mind, but there are several activities available. The Paducah ISD participates in UIL One Act Play competition each year, and usually does quite well. They perform their play for the public and when the competition is held in Paducah, the public may attend any or all of the competing play performances. The school bands also have concerts during the year as well as the Friday night football game half time performances. The city's churches hold Christmas cantata performances and children's programs where the community is always invited to attend. Paducah has its "Cats 'n Jammers" on Friday evenings where anyone can come sing, play music, or just listen and enjoy the performance of the gifted and not so gifted alike as they just have fun. In Childress, and the other small surrounding towns, almost all of the above mentioned activities take place and everyone is welcome to attend any of them.

Childress, 30 minutes north, has community theater programs during the year. In Wellington, 30 minutes north of Childress is the "Ritz" where newly released movies are shown during the week at scheduled times. The Ritz is the old 1928 theater restored, but is more. They have "live at the Ritz" Sunday concert series. Some of last year's performance included Palo Duro Metro Chorus of Sweet Adelines, Amarillo Virtuosi Orchestra, South Plains Dance Orchestra, and 4 Given, Gospel Quartet. It takes less time to get to those performances than one would spend going to such activities living in the big city with much less hassle. There is not the traffic, dull scenery or parking difficulties there are in Fort Worth/Dallas or even Houston or San Antonio, yet the quality of the cultural experiences are exceptional.

At the Palo Duro Canyon Park "Texas" is performed through out the summer months. The outdoor, musical theater located in Palo Duro Canyon State Park "Texas" is depicting the historical romance of the west and the settlement of Texas in the 1800s. With a 600 ft. cliff as the backdrop, live music, dance and state of the art light and sound effects, Pioneer Amphitheatre provides one of the most spectacular theatrical experiences in the nation. Season runs June-August and shows are held Tuesday-Saturday. Barbeque dinner served before every performance from 6-8pm. www.texas-show.com

Goodlett and Quanah (45 minutes northeast) have festivals throughout the year some that feature bluegrass music with different groups performing. Pease River Playhouse, in the Historic Rock Gym in Goodlett also is the site of other cultural events with other activities being held at the Old Gin/ RV park/Restaurant.

There are at least 11 area colleges and universities within 2 hours or less from the city of Paducah. All of them offer opportunities in the form of theater productions, concerts, and different authors lecture series that the public can attend. Texas Tech has the *Osher Life Long Learning Institute* that is a unique learning community for adults 50+. Membership benefits include discounted ticket cost to TTU Mainstage Theatre, the Lab Theater, Presidential Lecture and Performance Series, performance through The School of Music, and access to the extensive catalogue of books, journal and DVD at the TTU Main Library and Southwest Collection. Classes, special events and programs are offered to the members as well.

Backdoor Theatre 501 Indiana Wichita Falls The Backdoor Theatre, the converted ice house, offers a variety of shows year round including dinner theatres, musicals, dramas and comedies. They have regular shows and dinner theatres. For more information and a calendar of events visit www.backdoorthatre.org or call 940.322.5000.

Fain Fine Arts Center at MSU 3410 Taft Wichita Falls. Open Mon-Fri 8am-5pm when school is in session. **Midwestern State University** is strongly committed to providing attractive, serviceable fine arts facilities. The theatre wing of the Fain Fine Arts Center includes the recently refurbished 475-seat Fine Arts Theatre and the flexibly designed Bea Wood Studio Theatre. The art wing features spacious, meticulously maintained studios that ensure working environments conducive to creativity and achievement. Moreover, the recently refurbished Juanita Harvey Art Gallery is continually active, annually hosting exhibits by visiting professional artists, as well as students and faculty. 940-397-4243

Kemp Center for the Arts 1300 Lamar Wichita Falls. 940-767-2787 Originally built as a public library in 1917, the Kemp Center for the Arts is the center of the art community in the Wichita Falls area. The Arts Council and the Wichita Falls Symphony Orchestra, as well as many other groups are based here. There is a beautiful outdoor Sculpture Garden and both permanent and rotating art exhibits in the North Light Gallery and the West End Studio. Regular performances of the various arts, public classes and a variety of other events are featured at the Kemp.

Memorial Auditorium 1300 7th Wichita Falls. 940-716-5506 The last area Indian battle had been fought only 10 years before on the bluff where Memorial Auditorium now stands. Built in the late 1920's, in the early days, Will Rogers chewed gum, twirled ropes and performed on the stage along with Al Jolsen, Louis Armstrong, Elvis Presley, Duke Ellington, Ethel Barrymore, Helen Keller, Gene Autry and Bob Hope. Today, the Judds, Reba McEntire, Randy Travis, George Strait, Ricky Van Shelton and Garth Brooks have frequented the city. These current stars' double sellouts were matched by a double sellout of the national tour of the famous Broadway show Cats. Memorial Auditorium is proudly situated in a market in North Texas-Southern Oklahoma available to a population of over a quarter million people. The attractive and comfortable auditorium serves a public within a 100-mile radius of Wichita Falls. It is our highest priority to provide both the public and visiting artists and promoters with the finest service possible. They are happy to advise interested parties in choosing the most appropriate performance dates and to assist in publicity plans, press conferences and ticket planning.

The Wichita Falls Ballet Theatre awes audiences of all ages with its beautiful performances throughout the year. The Boehm Ballet Academy of Dance offers a comprehensive education for the development of the dancer, under the guidance of expert instructors, who have a background of wide professional experience. 3412 Buchanan St., Wichita Falls.

The Wichita Falls Museum of Art at Midwestern State University is the principal institution dedicated to collecting and exhibiting works of art in the North Texas and Southern Oklahoma region. Selections from the museum's permanent collection of American works of art on paper are regularly exhibited, along with temporary presentations of interdisciplinary and multi-cultural programs of international and national importance. Thanks to the generous support of the museum's members, there are no admission fees to visit the museum and enjoy the exhibitions. Situated next to Sikes Lake, the museum is a favorite destination for individual activities and community gatherings. #2 Eureka Circle Wichita Falls.

Wichita Falls Symphony Orchestra In May of 1952, the first full-time conductor, a Hungarian refugee by the name of Erno Daniel, took the podium and the following year, in the spring of 1953, the Wichita Falls Symphony League was formed. In 1964 the symphony featured Van

Cliburn as guest pianist! Cliburn returned for an encore performance with the orchestra in 1969. The current conductor, Dr. Candler Schaffer of West Melbourne, Florida presents a series of six subscription concerts in Memorial Auditorium each season. Attendance averages from 1,500 to 1,700 patrons per concert. The WFSO has grown to its present position as an outstanding asset to North Texas and Southern Oklahoma. The orchestra now employs approximately 70 professional musicians for its performances and features numerous outstanding guest artists as soloists each year. 1300 Lamar Wichita Falls.

Wichita Theatre & Opera House The first production presented at the Wichita Theatre when it opened in 1908 was a national touring show, His Honor, The Mayor written by Charles Henry Meltzer and A. E. Lancaster. From the 1940's through 1970's it was a premier movie theatre. The 2008 season marked the 100th Anniversary of the Wichita Theatre & Opera House with its birthday celebration in October, A 100 Year Musical Journey. A variety of family performances continue in 2009 with The Wizard of Oz, Oklahoma, Grease, The King & I, Alice in Wonderland, Snow White and more. 919 Indiana, Wichita Falls.

The Mane Event Wichita Falls The Mane Event, a fundraising project for the Leadership Wichita Falls Class of 2007, presents more than 40 amazing life-size fiberglass horses created in the style of Chicago's famous Cows on Parade. They made their debut in September 2008. Artistically painted by 30 artists, the horses have made their home at various sponsor locations around the city. Most are placed outdoors and can be seen from your vehicle. Map found on Mane Event website.

Art on the Green Outdoor Sculpture Invitational, Kemp Center for the Arts, 1300 Lamar is a free annual event that brings fabulous artwork to the Kemp Center's beautiful grounds for a year-long exhibit. Ten to 12 sculptures from artist all over the globe are displayed. The Sculpture Garden also houses permanent exhibits.

Other **art sculptures** in various locations around Wichita Falls include: **Crape Myrtle**, Harold Jones Park, **Hotter'N Hell Hundred Cyclist**, Comanche Trail and Council Dr., **The Sun Watcher**, Sunwatcher Plaza, Council Drive and Wigham, **Gates of Hercules**, Taft and Nocona Trail, **Little Girl Sculpture**, Birdwell Park, Harrison and Monroe, **Liberty Bell** at MSU, **Mustangs** at MSU, **Vietnam War Memorial**, Memorial Stadium, **WWII War Memorial**, Wichita County Courthouse lawn, and **WWI Memorial**, Memorial Auditorium.

Amarillo Symphony Uncorked Enjoy a concert with a popular artist then dance until midnight with the music from local bands. Globe-News Center for the Performing Arts.

Big Texan Cowboy Palace adjacent to the Big Texan Steak Ranch, this 350-seat theater is for concerts, musical reviews, special events and parties throughout the year. Tickets for all performances usually include dinner.

Amarillo Little Theatre Community Theatre. One of the oldest continuously performing theatres in the U.S. 806 355-9991 www.amarillolittletheatre.org

Amarillo Botanical Gardens Four acres of diverse seasonal gardens and an in-door tropical conservatory. Educational programs, art exhibits and summer music performances. Special event areas available for rent. 806 352-6513 www.amarillobotanicalgardens.org

Amarillo Civic Center & Globe-News Center for the Performing Arts

Home to Opera, Symphony, Ballet as well as a variety of special events, concerts and education of the arts to 80,000 children in the panhandle. Easy access I-40 & I-27 806 378-4297 www.civicamarillo.com Tickets www.panhandletickets.com 806 378-3096

Amarillo Opera Guest artists and talented cast perform world beloved operas in English. Schedule/performances 806 372-7464 www.amarilloopera.org

Amarillo Symphony From String Quartets to a Symphony Youth Orchestra, panhandle symphonic artistry at it's best since 1924. Dates/Times 806-376-8782
www.amarillosymphony.org

Lone Star Ballet Promotes the art of dance with scholarships to West Texas A&M University students. Full season of lovely choreographed productions with the highlight of the year "The Nutcracker". 806 372-2463 www.lonestarballet.org

Santa Rosa Palomino Club of Vernon thrills audiences with its fast-paced performance, color, spirit and dedication to maintaining a tradition of being the finest non-professional riding club in the nation. Each performance of the Santa Rosa Roundup features the famed club. The group made its first ride in 1950 in Childress with 29 riders. They have earned over 400 first place parade trophies. They have ridden in inaugural paraded of the governor of Texas.

National Center for Children's Illustrated Literature celebrates the artistic achievements of children's book authors and illustrators through exhibits designed to stimulate creativity, promote literacy and increase appreciation for the arts. 102 Cedar, Abilene

The Center for Contemporary Arts is home to more than 70 artist members and 10 working studios. The Center's four galleries host more than 34 annual exhibits and artist working in a variety of media. 220 Cypress, Abilene

Paramount Theatre free self-guided tours in this fully restored 1930's theater. It features concerts, live theater and touring shows, classic art house and special even films. 352 Cypress, Abilene

ACU-Cockerell Art Gallery is home to a wide variety of exhibits and events, including the performing arts. Programs include a "Second Sunday" lecture series. The Art Gallery is home to many of Abilene's upcoming artist and photographers. 1133 N. 2nd. Abilene

Abilene is known for its numerous public sculptures. Also available in Abilene is the **Ballet Theatre, Community Band, Philharmonic Orchestra and the Abilene Opera.**

Buddy Holly Center view the most comprehensive permanent exhibition dedicated to the life and music of Buddy Holly, Lubbock's most celebrated native son. The center is a cultural arts facility offering programs in the visual arts and Texas music. It houses the Buddy Holly Gallery, Texas Musicians Hall of Fame, Fine Arts Galleries and a museum shop. The center also houses the Texas Musician Hall of Fame and the Lubbock Fine Arts Gallery. 1801 Crickets Ave., Lubbock

National Ranching Heritage Center under the vast Texas sky explores the 47 restored historic ranch structures that tell the story of the pioneers who settled the Wild West, Lubbock.

The Louise H. Underwood Center for the Arts is home to many art and cultural organizations in the South Plains Region. Its campus includes multiple working studios, visual art galleries, a theatre and a rehearsal Hall, Ave K and Mac Davis Lane, Lubbock.

Live Performances—a wide variety of live performances await visitors to Lubbock. Lubbock is alive with music and theatre. The wide range of activities can take the visitor from a performance by the **Lubbock Symphony Orchestra** to a Broadway theatre production. All this and more can be found at: **Ballet Lubbock**, www.balletlubbock.org, **Cactus Theater**, www.cacturtheater.com,

Hemmie Recital Hall, TTU Campus, www.ttu.edu/music, **Lubbock Community Theatre**,
www.lubbockcommunitytheatre.cor, **Maedgen Theatre** TTU Campus, www.theatre.ttu.edu.

Festivals and Events

Both of Paducah's major festivals each spring center around old time settlement of Cottle County and Paducah. The Old Settlers' Reunion and Rodeo, originally called the "Horse and Colt Show" is a long tradition dating back to 1942. The events scheduled on Saturday include a morning program and registration, visitation with old friends and family, and conclude in the evening with a Bar B Que and rodeo. These take place after a fun filled parade sporting floats, riding clubs, horses, bikes, motorcycles and even tractors and golf carts. For the kids ages 3-7 there is Paducah's own "Stick Horse Rodeo" that takes place in the afternoon prior to the "real" rodeo. Pioneer Days is new, 2009 being its initial season. Pioneer Days hosts activities of pioneer daily life demonstrations from soap making, quilting, brush arbor singing, shoot out reenactments, games that were played by pioneer children and adults, to live music and food booths. Vendors with items from antiques to modern day goods are available. Tours of the town via a "hay ride" trailer with a narrator pointing out items of interest are given. The City-County Heritage Museum and the Cottle County Law Enforcement Museums are open with tours given for those interested. It concludes with a dance with live band providing the music.

In January, the Calf and Pig Show, or the 4-H project show and youth show takes place. Folks can review all the projects the youth of all ages enter in the competition. The judging of the animals takes place most of the day and those attending can root for their favorite participant. A live auction of the show animal and projects that won top ribbon honors takes place that evening. King, Childress, Motley and Crowell counties located 30 minutes north, south, east, and west have their own version of Paducah/Cottle County show.

Each year in February the Methodist youth group hosts a Valentine's Banquet as a fundraiser/festival. By prior reservation, each dinner is cooked to order consisting of steak, potatoes, and all the trimmings including dessert and drink. Guest are seated and waited on by young men and ladies dressed in their "Sunday's Best" attire. The atmosphere is charming and perfect for a "romantic Valentine's" dinner.

Easter celebrations at each church take place during March/April. The annual Easter egg hunt is enjoyed by all ages at one of the city's parks. These are also the months for Pioneer Days Festival and the Old Settlers Reunion. Beauty pageants are held during this time of the year. Paducah hosts one for the "wee ones" as well as Junior Miss and Miss Paducah. Childress and other surrounding town host similar activities.

As summer approaches, Paducah has a Memorial Day Observance on Memorial Day. Earlier in the week citizen volunteers place white crosses on the courthouse lawn for each Cottle County Veteran who has died. Each veteran has his name is on a cross. This is a very impressive sight with almost half the lawn filled with white crosses. At the morning ceremony any veteran that has died during that year is named as a tribute to his death and service. June is the month every three years for the Tri-annual All School Reunion. A program and business meeting, class visitation at the school during the morning, with teachers and former teachers having breakfast together begin the festivities. The classes have lunch with their respective classes usually in one of their members homes, and all come back together for a evening of good food (catered dinner),

visiting and program. During the summer months the 4-H host team-roping activities are open to the public. Horse Club Play Days are scheduled during this time and are open to the public. Ten County 4-H camp and the Ramada Sale are also held during these months. The Ramada is the huge horse sale for Tongue River, 6666, and Pitchfork Ranches. The Greenbelt Bowl, a football game with graduating seniors from the area, also is an annual event. Fourth of July in Paducah brings fun activities including free watermelon in the park, swim races at the pool, and a Patriotic Program at the football stadium followed by fireworks display.

The annual school homecoming activities come with fall, including the ex's teas, bonfire, pep rally and ballgame. Friday nights are full of football and sometimes an occasional girl's volleyball game, but those are usually on other nights. Paducah hosts a Hunter's Appreciation dinner during the main part of hunting season. Fall also brings the PTO Carnival with booths, fun and good times, whether you actually participate by playing bingo, play at a booth, or just "watch the fun." Trunk 'R Treat" takes place around the courthouse square on Halloween afternoon, or early evening. It brings out all sizes of ghost, goblins, cuties, and the "uglies" looking for treats given out of the trunk of the car and back of pick up trucks. Much of the fun seems to be had by the adults that hand out the treats. The Methodist Bazaar and pumpkin sale is usually in November prior to Thanksgiving. The school has a bazaar in November as a fundraiser for the FCCLA. Friday after Thanksgiving is the night that begins the Christmas shopping season. The lighting of the Courthouse Christmas lights, Paducah's Santa arriving on a fire truck for the kids and young at heart, begin the activities while the adults check out the downtown stores' wares while sipping hot cocoa. Later in the evening are the drawings for each of the many donated items given by local business and individuals to all the lucky registered persons whose names are drawn.

All of the surrounding cities have similar activities all through the year. Some host carnivals and haunted houses as well for Halloween. Most all have churches that host activities for all the holiday seasons and Bible schools during the summer for the children and adult volunteers. Quana has a Fall Festival with arts and craft booths, car show, games and contest in September. They have a lighted Christmas parade, Cowboy Christmas Ball and New Year's Eve activities.

Motley County hosts the following yearly activities: Boondockers Grand Prix Race in downtown Matador; May 1st Saturday-Highway 70 Garage Sale (70 miles) in all towns; May 3rd weekend-Bluegrass Festival Flomont; May 3rd Saturday-Hardin and Turner Western Trade Day in Flomont; June 4th weekend-Burleson Roping Events, on the road to Flomont; July 4 Parade and evening Fireworks (Best of the Caprock), Roaring Springs; July 3rd weekend-Motley County Junior Rodeo; Roaring Springs, Foothills Saturday Night, downtown Matador; August- 4th Thursday-Old Settlers Ranch Rodeo & Reunion- Parade -Roaring Springs; September-(weekend after Labor Day), Cowboy Camp meeting & team roping Roaring Springs; October/November Fall Bazaar in Flomont by Do-Gooders Club; November Arts and Crafts Show in Matador; December-Old Fashioned Santa night & late night shopping, downtown Roaring Springs & Matador.

Besides the Festivals common to most all counties around Paducah, Floyd County has Punkin Days the 2nd weekend in October. Briscoe County (Quitaque) has a Bluegrass Festival in May PaWa Trades days in the spring and fall and Grand Prix and Enduro races in March, with Turkey

their close neighbor hosting Bob Wills Day the last Saturday in April, and Jamborees held in the Gem Theatre in downtown at other times during the year. Not a festival, but fun just the same is buying Sweet Potatoes in Turkey that are available in the fall for those who need a few or a lot.

Ralls has their Rodeo the 2nd weekend in August; Cotton Bowl Fest 2nd weekend in September; and a Car Show the 1st weekend in October; while the other major city in Crosby county, Crosbyton's Annual Events are Cowboy Gathering and Dinner, and Farmers Market & Prairie Days.

Roaring Springs' Annual Events include Cowboy Camp meeting and team roping in May, Old Settlers Rodeo & Reunion held the last weekend in August, and Motley County Fair held in October.

Spur Dickens Annual Events are Highway 70 Garage Sale (70 miles) 1st Saturday in May; Fun Day-April 14th; Dickens Homecoming -June 9th; Swenson Park Barrel Race - June 9th and 4th of July celebration - July 4th (Dickens).

Kent County, Jayton, hosts Gridiron Classic which is a high school six-man football exhibition for area schools.

Vernon's special events held each year include the Santa Rosa Roundup. This four-day rodeo brings in top-name professional cowboys and cowgirls each year. It is recognized as one of the finest rodeos of its size in the nation. It is also home base for the Santa Rosa Palomino Club, an award-winning riding club whose precision drills have thrilled audience from Houston to Canada. Another event is the summer's last blast which is the show case for gleaming classic cars, meticulously restored antiques, vehicles and rumbling hot rods from a multi-state region for a car show and cruise night each August. There are special activities, and spectators line the street, bringing lawn chairs, barbecue grills and other equipment to make it a block party for the entire community. Vernon's Burnin' Bike Ride and Road Race is a challenging summertime bicycle race for riders of all levels. Dona's May Picnic is the oldest picnic celebration in the State held first Saturday in May. Electra (70 minutes east) annual festivals include the Pump Jack Chili Cook-off (in April) celebrating Electra's oil heritage, the Electra Goat Barbecue on Mother's Day weekend and the Holiday of Lights Christmas Parade the Saturday evening following Thanksgiving Day.

Plainview, 90 minutes west and Altus, Ok, 90 minutes northeast host many of the same type of activities. Wayland Baptist University at Plainview has all the typical festivals and events that a college holds especially at homecoming where there is always a theatrical production as well as the ballgames. Altus also has the Quartz Mountain Music Festival at the Quartz Mountain Resort. They also hold other festival and activities during the year.

Wichita Falls, Lubbock, Canyon, Amarillo, and Abilene all have a calendar of events full of activities for each month. Some include horsing events, gun and knife shows, monster truck rallies, home and garden expo, bridal showcases, air shows, wine fests, quilt shows, gem and mineral shows, and a variety of activities for the Christmas seasons. One night each week during the summer months, Wichita Falls has a movie series and dinner through River Bend Nature Center, summer outdoor concert series, and live at the lake-outdoor concert series. Wichita Falls

is also famous for its Hotter'n Hell One Hundred bike race each year. All of these cities have at least one university each having their own activities and events for the public's enjoyment.

Major festivals and events held in Amarillo include: National Cutting Horse Association. World Championship Finals, a 10-day event. Amarillo National Center www.nchacutting.com; World Championship Chuck Wagon Roundup and Chuck wagon cook off. Ranch cowboy cooks compete against each other for highest paid prizes in the country, Tri-State Fairground; Range Riders Rodeo 4th of July tradition for the whole family, Will Rogers Range Rider Arena Loop 335 & Washington; Polk St. Block Party, Live entertainment, great food downtown Amarillo, Presented by Center City of Amarillo; Annual Boys Ranch Rodeo, Labor Day BBQ; Good Times Celebration BBQ 2nd Thursday. 100 cooking teams compete. The Cowboy Mounted Shooting Association, World Championship Fast and accurate shootout competition, Amarillo National Center; The US Team Penning Association National finals last week. October. Amarillo National Center; World Championship Ranch Rodeo. Real ranch wage earning cowboys, US and Canada compete for World Champion title. Civic Center; Llano Cemetery by Twilight, Last Saturday in October is the Historic section walk through. Hear stories of past places and people. Admission charged; Annual Christmas Open House, Panhandle Plains Historical Museum in Canyon; Amarillo Farm & Ranch Show at Civic Center. Over 700 exhibitors. One of the largest shows of it's kind; Christmas in the City~Magical light parade downtown "The Nutcracker Live ballet. Civic Center.

Sports at all Levels

Paducah is alive with sports of every variety. Each school year in September the football season begins. Paducah plays 6-man football. It is a quick and exciting jammed pack game each Friday evening. The Dragons love their football. Occurring during the same time frame, and equally exciting, but usually not on a Friday night, is girls' volleyball. If track is your "cup of tea" then cross-county takes place in the fall, but spring is the season for track and field events. The Dragons would welcome any and all new faces that want to cheer them on. At the end of football and volleyball season in Paducah start the basketball season. However, if either are lucky and make it to the state tournaments, there could be all three going on at the same time. Sports junkies can have both high school and junior high basketball and football. There is even the "little dribblers" league if you need more basketball and the young kids are fun to watch too. As the basketball season ends, it is the beginning of spring track and field for both junior and high school boy and girls along with baseball in high school. Tennis and golf are played about this same time each year by the school boys and girls, and they too will welcome any new cheering fans, as these sports are not the ones usually well followed by most communities. As school gets close to the end of its year, the little league teams get fired up and carry you through the summer. Mixed in with all this is the 4-H horse roping and riding events and of course the rodeos. Paducah's is held in April each year, but every city surrounding from 30 minutes to however far you want to drive has one or more each year. One of the major rodeos is the Santa Rosa Roundup in Vernon where the Santa Rosa Palomino Club thrills audiences with its fast-paced performance, color, spirit and dedication to maintaining a tradition of being the finest non-professional riding club in the nation. Each performance of the Santa Rosa Roundup features the famed club. The group made its first ride in 1950 in Childress with 29 riders. They have earned over 400 first place parade trophies. They have ridden in inaugural parades of the governor of Texas. **This is cowboy country, so there are rodeos and more rodeos.**

For the sports lover who wants even more, with more than 11 universities with in 2 hours or less easy drive, there is always some sport event to attend. Texas Tech is located in Lubbock, 2 hours drive west through the scenic country taking you atop the Caprock in almost traffic free roads where Red Raider land is abundant with sports events. West Texas A&M, located in Canyon, 2 hours northwest, offers all the sporting events a major university has available. Midwestern University is located in Wichita Falls, and Abilene offers, Hardin-Simmons, McMurry, and Abilene Christian University. Plainview is home of Wayland Baptist University where basketball and track reign. Sports at Wayland University are (NAIA Division I) men and women basketball, indoor and outdoor track and field, cross country, men's baseball, men's golf, women's soccer, and women's volleyball. Extensive intramural programs for men and women also are available. Amarillo and Wichita Falls both have semi-pro hockey teams, and Amarillo has semi-pro basketball, baseball, and arena football. (Amarillo Dusters ,AF2 league. Indoor league of the NFL. Home games played Apr.-July at the Amarillo Civic Center Coliseum; Amarillo Dillas Professional baseball team; Amarillo Gorillas Central Hockey League professional team. Mid-Oct.-Mar.) One can be at any of these events quicker and is less the hassle it would take for most folks going to any activity in a large city.

When a Paducahan wants to play a sport there are tennis courts at the country club where one can play a set or more. This is also the location of the newly remodeled golf course. According to

some who played the reopening tournament, this course is comparable to the best Dallas and Ft Worth have to offer. There are golf courses in Childress, and Motley County both 30 minutes away as there are in most other cities a few minutes further to 2 hours away. Tournaments are played all during the year that one could be a part of should one choose. Bowling is available in Wellington 60 minutes north at their Activity Center as well as Abilene, Lubbock, Altus, Wichita Falls, and Amarillo. Childress has a roller skating rink, but Wichita Falls has ice-skating at the rink used by the professional hockey team. If interested in ice-skating it may also be available in Amarillo.

There are nature trails and walking areas in all surrounding cities for those that enjoy the sport of jogging, running and/or walking. The parks here in Paducah offer nice walking areas, some just through quite grassy areas, and others on sidewalks. The Matador Wildlife Management Area outside Paducah has areas for walking/hiking that vary from the easy to the rough, strenuous hike. Wellington 60 minutes north has picnic areas and hiking paths along Salt Fork of the Red River at three bridges near town. They also offer an indoor track, ball courts, weight room, bowling and arcade at Wellington Activity Center. For the swimmer there is the Paducah's city owned pool open from the end of May to after Labor Day each year and the country club pool for members.

If car races are what is wanted there are several locations for that. Childress has recently been awarded a grant of \$239,908 for expansion of its all terrain vehicle and motor cross park located 8 miles northwest of Childress on US Hwy 287. The park has 25 miles of trails across 600 acres. Red River Speedway is in Wichita Falls, with a ¼ mile semi-banked asphalt oval track, host exciting racing events from March through October. An ASA Member track, Texoma Motor Speedway, Wichita Falls is a dirt track racing on 1/10-mile and 1/5-mile banked clay oval tracks. Go Karts, Mini Sprints, Mini Stocks, Pro-4 Trucks, Mod-4Cars. Events run from March through November. Abilene has motor sports at the Abilene Drag strip, Abilene Speedway and Mesquite Hills MX Park. Amarillo Dragway every other weekend weather permitting; Route 66 Motor Speedway IMCA Modified, Super Stock and Street stock racing every Saturday night Apr.-Sept. Newest up-to-date facility.

If the sport of choice is fishing or any other water sport, then Paducah, even though the state statistics say there is no real surface water available here, is the place to be. There are several private lakes with day fishing leases and cabin leases that come available from time to time where one can go and be alone with nature. Public lakes are as close as Childress of varying size and depth where catfish, bass, crappie and other fish are biting, and water sports are taking place. Caprock Canyon State Park, Quitaque, about 1 hour drive northwest, Coppers Break State Park, about 1 hour northeast, both have lakes offering good fishing and water sports. Green Belt Lake, less than 2 hours northwest, Diversion Lake less than 1 ½ hour northeast, Lakes at Altus, Ok, 90 minutes northeast, White River Lake less than 90 minutes west, Lakes at Lubbock, Wichita Falls, and Abilene, along with Abilene State Park are all available for fishing and other water sports.

Paducah and Cottle County are known for their ideal hunting. Quail, dove and turkey abound in the rugged ranch lands that surround Paducah. Wild hog, white and mule deer are plentiful, so much so that you may see any and all of these right in the city streets of Paducah. With the Matador Wildlife Management Area a short distance from the city, there are opportunities for the

hunter to have access to hunting of most of these animals. The management area also host training for youth where adult sponsors along with these youth get opportunity to hunt prior to regular hunting season.

New to Paducah is a non-profit organization called "Hunting with Soldiers" which is a Big Country *Support the Troops* program. It was started with the sole purpose of taking soldiers as well as wounded veterans hunting at no cost to them. Their main focus is on those who are coming back from Iraq and Afghanistan to allow the mental healing that getting back into outdoors allows the soldiers to do. They have a house that is free to them while here in Paducah to hunt on land at no cost to them. There are wheel chair ramps supplied for most all the hunting stands. If they do not own a gun or they cannot have it due to restrictions on base, the plan is to have a selection of weapons for the veteran/soldier to use during this experience. They will be taken to the range, help sight the weapons and then be taken to the field so they can hunt. According to several of the active duty soldiers and one wheel chair bound veteran, the hunt was the best healing time they had.

Other Information and Summary

If you retire in Paducah, you will enjoy the peaceful small community lifestyle. We have a town where you feel safe even if you forget to lock your doors at night. You do not have to worry about the hustle and bustle of big city traffic, and noise. You may even observe wildlife such as turkey and deer walking up your street. But you can be assured that you can always see your friendly neighbors out and about either in their yard, at school functions, city festivals, holiday events, or just at the post office, as that is where all citizens living within the city limits of Paducah pick up their mail daily.

Former resident R. Potts, a man who settled in Cottle County sometime around 1850 named Paducah after Paducah, Kentucky. In 1892 Cottle County was organized and Potts's dream of a city being formed came true. A post office was established in 1891, the Paducah Post founded in 1893, and by 1903 the population was 151. One year after the Quanah, Acme and Pacific Railroad arrived in 1909, Paducah was incorporated with a population of 1350. It grew to a large bustling city where on a Saturday there was hardly room to walk afternoon around the courthouse square. There were movies theaters, grocery stores, the first M E Moses variety store, J C Penney's, and much more. That was the time when the county was full of small independent farmers, who had large families living on the farm. There were as many as 30 schools in the county with just as many little communities. Almost all of them are gone as the farms were sold off, younger members of families left for "big city" life, and the appeal of the small town way of life diminished. Paducah though smaller is still surviving. Today, Paducah, Texas is the county seat of Cottle County located where US Highway 70 and US Highway 83 intersect connecting the borders of the United States, thus often referred to as the *Crossroads of America*. Paducah is 2 hours drive or less to the cities of Amarillo, Lubbock, Plainview, Abilene, Wichita Falls, TX and Altus OK. Paducah is located in rugged ranch county where cowboys are still respected and admired. Because of this terrain, Paducah boasts of some of the best hunting in the State of Texas, including turkey, quail, dove, wild hog, and mule and white tail deer.

Known for its big heart, neighbors are caring and always willing to lend a helping hand. Citizens are friendly and community focused. Retirees can either be an observer or become actively involved in community efforts. The Cottle County Leadership Forum (CCLF) a group of citizens volunteering to get things done for Paducah has several projects in the works. One being efforts to restore the courthouse square's historical "Palace Theater". At this point it is moving slowly as are some of the clean-up projects around town since there could be an asbestos obstacle. This is an issue many small as well as larger towns are facing as they try to move forward and make change. Smaller towns seem to struggle more due to the cost, but the Economic Development Corporation (EDC) is working to find citizens interested in certification training to become licensed inspectors/identification of asbestos. The Economic Development Corporation (EDC) would pay for the schooling with an agreement that the individuals would take care of the identification if there is any in the buildings that the city wishes to either restore or destroy. Once that obstacle is removed, then several projects will then go full force.

Another project of the CCLF has in progress is a "tree" project. They wish to do tree planting throughout the city on public property. The plan is to begin at the north entrance to town on US Hwy 83. This project will be funded through grants and volunteer work efforts. Another project

is the replacement of missing or damaged street signs through out the city. The “Old Jail” restoration is on going which is the site of the Cottle County Law Enforcement Museum. It has recently had mortar repairs to the outside with missing brick replaced. The CCLF and Chamber of Commerce are pursuing having murals painted on walls of stores that are in public view, and decorating downtown store fronts and/or windows displays especially in those now vacant to make the courthouse square a more attractive and appealing place for the citizens as well as the traveler passing through. The Friends of the Community, also a volunteer group is involved in getting an arena/all purpose center constructed. The land has been bought and work on the grounds started. Three citizens have recently gone through grant writing training/refresher class to assist in writing of grants to fund projects that these groups tackle.

Paducah’s local government consists of an elected mayor and 5-member city council elected at large by the citizens according to state election codes and general state laws. City employees along with the mayor see to the day-to-day operations of the city water/sewer/trash service, but other utilities are not city owned or contracted. The electric service company is at the citizen’s choice, but service problems/repairs are taken care of locally by AEP. Greenlight Gas Co. provides natural gas service and bill payment may be done locally at the Paducah First National Bank, where on Friday you can get a free bag of freshly popped popcorn and take care of your banking business. A local propane company is available to see to propane needs of “country homes” and the Paducah city bar-b-cuer’s grill tank refills. High-speed Internet service is available through SuddenLink and Cap Rock Telephone Cooperative. Cable TV is available, but many use satellite services such as Dish Network and Direct TV. “Land line” phone service is available through Cap Rock Telephone Cooperative. Cellular services are available as well mainly through Caprock Telephone or Verizon, but others are available. There are 2 banks, Paducah First National, that has been in Paducah over 100 years and gives out doggy biscuits at the drive through window to your pet, and the Cottle Branch of First Bank and Trust of Childress, a local newspaper, “The Post”, a locally owned grocery store, convenience stores, automobile dealership, barber and beauty shops and lumberyard as well as other business located within Paducah’s city limits.

As recent retirees to Paducah, the atmosphere of a slow paced, laid back, friendly caring community is refreshing. The necessities are all here or close by. One can drive 30 minutes north when what you want or need is not found locally, just a quickly as one can in the large city. The big difference is this drive is scenic and peaceful, not filled with traffic congestion, angry motorist, or smog-laden air. For shopping at major retailers, malls or even Sam’s Club, all that is 1-2 hours away depending on which direction you head and what particular shopping you want. It too is a pleasant, scenic drive through rugged ranch land where you are more likely see more deer, turkey, wild hogs or birds, than people in cars or trucks. As a member of the community I can rest assured that should I have a medical emergency, the emergency assistance I need will be in my home in a very few minutes (usual reports to the monthly Commissioner’s Court is less than 3 minutes), be transferred to a hospital, and if necessary sent on to a facility where care is equal to any major Texas city hospital, quicker than could happen if I were still living in the Metroplex area of Dallas/Ft Worth, San Antonio or Houston/Galveston.

Paducah is indeed the **“Crossroads of America”** with the 2 major US highways intersecting in town. We have it all. The convenience of finding whatever we want in a pleasant drive, where

honking horns, are for waving at your friends and neighbors, or the wildlife too close to the roadway. No stop and go traffic filled with drivers in a hurry to get to their destination. We are folks that meet the challenge head on and want to see Paducah continue. Paducah is seeing some of those former youngsters returning to their roots and some others who want the quiet small community atmosphere return as well. We want the retirees to come be a part of the Paducah way of life **here in the middle of nowhere, but in the heart of everything**. Beside where else can you get a free bag of popcorn on Friday's while doing business at the First National Bank of Paducah, or your dog get a doggy biscuit as you bank at the drive thru window.

Tab 3
Completed Score Sheet

Tab 4
Letters of Support From
Community

Tab 5
Marketing Plan

Certified Retirement Community Marketing Plan—Tab 5

Mission Statement

Paducah, Texas is a community known for its big heart, caring neighbors and friends always willing to lend a hand. The small town atmosphere combined with a low crime rate, entrepreneurial support and civic spirit attract retirees to this rugged ranch country. The American way of life is experienced everyday in this unique rural community located in the middle of nowhere, but in the heart of every thing. Progress is being made to preserve what we have and prepare resources to ensure the future of the community.

Target Markets

Paducah Certified Retirement Community welcomes those who want to retire to the small community life style where neighbors care for each other's welfare and well-being. Retirees seeking a place where the sky is clear, the air is clean, and the stars bright will find Paducah the perfect choice. Paducah's climate will appeal to the retiree who is looking to leave the areas of harsh winters as well as those wanting to leave the hot, humid days of the far south behind. Since Paducah is surrounded by several large ranches—6666, Pitchfork, Triangles, Matadors, Tongue River just to name a few, smog, noise and traffic congestion do not exist here. Instead Paducah is a community that is away from the "madness" of the "big city" yet retirees would find it close enough to be accessible to all that the "big city" offers. With over 10 universities from the community college to major university, such as Texas Tech and West Texas A&M within 2 hours or less drive time with nearly traffic free access, there is opportunity to continue ones education whether credit or non credit, online or on campus. Paducah offers cultural activities locally, but within an hour or less drive are all the cultural activities one could ask for including art exhibits and artist, symphonies, theatre and opera. All the universities offer access to the same type of cultural activities as well as a variety of sport events. In addition to these activities, sport enthusiast retirees will find semi pro hockey and baseball accessibility easier than in the large cities. There are many recreational areas close to Paducah that offer fishing and hunting. If the retiree is a veteran the "Hunting with Soldiers" organization might be something they would be interested in supporting. It is focused on helping soldiers and veterans who are coming back from Iraq and Afghanistan have a place to go hunting and stay during their hunt time at no cost. If would be just one of many volunteers opportunities a retiree will have here in Paducah.

Paducah citizens known for their big hearts and willingness to lend a helping hand will embrace retirees especially those who want to be an active participant in a community focused on being progressive, yet maintaining that small community atmosphere. However, those who wish to be less active will be just as welcomed.

Competition

Paducah's competition would be the neighboring cities, all 30 miles away in all 4 directions. Matador 30 miles to the west with a population of approximately 750 has similar amenities as Paducah in that it has a grocery store, a couple of resale stores, antiques, a couple of convenience stores and restaurants. Matador's location puts it closer to Lubbock and Plainview, but further from Wichita Falls and Altus, OK

Guthrie 30 miles to the south with a smaller population than Matador has few amenities, but is in the center of 6666 ranch lands and closer to Abilene. It is further from Amarillo, Canyon, Plainview and Wichita Falls, as well as Altus, OK.

Crowell 30 miles east has a population of approximately 1200 offers similar amenities as Paducah. Crowell is closer to Vernon and Wichita Falls, but further to Lubbock, Amarillo and Abilene.

Childress, 30 miles north with a population of approximately 7,000 has major retailers (Walmart and United Super Market, and soon Tractor Supply Co). It has major fast food chains (Sonic, McDonald, Dairy Queen, etc) and a critical care hospital. Childress is farther from Lubbock, Plainview and Abilene than Paducah. It is located on US Hwy 287 that has much truck traffic and the main connection from Dallas to Amarillo.

Quanah 45 miles northeast, population 3,000 and Wellington 60 miles north, population approximately 2,300 both offer similar amenities as Paducah, but are further from Abilene and Lubbock. They both also have a 24-7 emergency care hospital.

Vernon, 60 miles to the east population approximately 12,000, Plainview 90 miles west, population approximately 25,000, Altus, OK, 90 miles northeast, population approximately 21,500, Lubbock, 2 hours southwest, population approximately 220,000, Amarillo, 2 hours northwest, population approximately 180,000, Canyon, 2 hours northwest population approximately 12,000, Wichita Falls 2 hours west, population approximately 105,000, and Abilene, 2 hours south, population approximately 116,000, all have a large variety of major retailers, shopping malls, restaurants, sport events, theatre, both live and movie, zoos and together 10+ universities.

SWOD Analysis

Strengths

Location: Paducah is located at the intersection of US Hwy 83, which goes from the tip of Texas to the Canadian border, and US Hwy 70, which goes from the east coast to the west coast. Within 2 hours or less in stress free and almost traffic free driving, are all the amenities available in Amarillo, Canyon, Lubbock, Wichita Falls, and Abilene. All have international airports with American Airlines, Southwest Airline and others connecting to major airports. More than 10 universities, among them Texas Tech and West Texas A&M offer all university services for continuing education and cultural and sports events. Texas Tech has special programs for 50+

year old individuals and Wayland Baptist University, 90 minutes west in Plainview has audit classes at 1/3rd tuition cost and a “Gold Card” program through the main office for seniors taking classes for non credit at no cost. Since Paducah’s location has enabled it to be called the “Crossroads of America” there is easy access in all directions to all the amenities, education, or activities any retiree would want. Retired military persons will find easy access to 3 military bases within 2 hours or less drive.

Cottle County, Paducah being the county seat, will benefit from the wind energy industry in the near future, as three new transmission lines will be constructed in different sectors of the county. This economic boost will assist in both short term and long-term job prospects, services provided by businesses in the region plus all the advantages of a new industry moving to the region.

Cost of living: utilities, housing and taxes are much lower than the surrounding larger cities. Even though the county does not give the homestead exemption for 65 year old or older households, it does give a tax exemption to all households, which in many instances is more than the \$15,000 valuation homestead exemption would be. In the near future hopefully the city will reinstate the homestead exemption for 65 years old and older.

Emergency Medical Services: trained EMT and response time for emergency service is usually less than 5 minutes with both fire department and ambulance services responding as appropriate.

Local Activities: city parks, including city operated swimming pool, country club with golf course, swimming pool, and tennis courts, annual Old Settlers Reunion and Rodeo, Pioneer Days, Memorial Day Celebration honoring all veterans from the county who have died with a white cross with their name placed on the court house lawn and a memorial program, 4th of July Celebration including free watermelon in the park and evening fire work display, local school activities (UIL One Act Play, sports, musical concerts/performances), tri-annual All School Reunion, city library, fitness center, City/County Heritage Museum, Cottle County Law Enforcement Museum, active civic and service clubs, churches, and service organizations. Paducah/Cottle County offers the best hunting around for birds, hogs, and deer, both white tail and mule. Matador Wildlife Management Area’s 28,000 acres is available for hunting and other outdoors activities and also hosts youth activities that offer early preseason hunting for the adult sponsors. Three Rivers Foundation Campus located between Paducah and Crowell allows and encourages use of their facility for anyone to view the night sky through their telescope observatory. The campus also offers free star gazing parties.

Activities easily accessible: Many lakes for fishing, and all other water sports within easy drive of 2 hr. or less, state’s largest historical museum in city of Canyon, Palo Duro Canyon, second largest canyon in US and home of TEXAS outdoor musical, Caprock Canyon State Park, Copper Breaks State Park, Abilene State Park, recreation facilities, fine arts, cultural activities, sports, college activities.

No Industrial air or water pollution, low traffic volume--less noise and smog.

Weaknesses

Limited Public Transportation, limited local shopping, limited housing—especially multi-family housing and apartments such as duplex and condos other than those controlled by government housing authority. Older homes owned by inheriting family member in need of repairs, no homestead exemptions for 65 years old and older, but there are county exemptions that usually amount to more than the \$15,000 valuation exemption authorized by the state constitution. There are no local pharmacy or dentist, and limited local medical care/physicians.

Opportunities

Affordable commercial property and business opportunities for those self employed or want to be self employed, especially in construction industry and medical/dental fields, cottage/internet based businesses, some growth with the returning of now retiring former citizens, low cost housing, home sites, and “fixer uppers” available. Continuing education through Internet at home or at the city library, and more than 10 universities in 2 hours drive or less that offer studies for credit or not, on campus or on line.

Dangers

Larger cities and communities have major retailers and better dining opportunities. Limited public transportation for those needing to go to the larger cities. Fuel cost to travel to those cities.

Strategies the community will employ to attain goals.

Paducah will employ traditional and innovative methods to market the community as a desirable place for retirees to live. These will include

- Website—continue to enhance and add to the City of Paducah’s website in a way that promotes the location and assets of the city, and answer many of the frequently asked questions concerning our city.
- Finalize and develop further brochure/brochures that highlight Paducah’s advantages.
- Use of Periodicals—space in magazines and newspapers that target retirees and the aging population will be purchased as feasible.
- Develop an area in Paducah that will house information concerning Paducah, the cities attributes, activities, opportunities and for Certified Retirement Community office to disperse such information
- Develop billboard space and use available space that list Paducah as a Certified Retirement Community
- Make use of TDA assistance and expertise in improving and marketing Paducah
- Specialties—key chains, travel mugs, pens, etc. all with logos, website address and phone numbers will be developed to give to those interested in Paducah.
- Public Service Announcements
- Other methods as feasible

Paducah will seek incentives for developers to build affordable housing, both single and multi-family dwellings. We will work with Paducah City Council to find other revenue means that will allow the city to reinstate the homestead exemption for 65 years old and older households. We will encourage local organizations to recruit and involve retirees. We will seek ways to improve the public transportation especially for senior aged individuals who are no longer able to drive themselves. We will encourage local businesses to hire retirees and to offer discount for seniors.

We will continue to encourage citizens to volunteer for programs such as the Fire Department so it can continue to perform its duties in the same rapid response time. We will work with and encourage the EDC to continue to find ways to enhance the marketability of Paducah as a site for more business opportunities and attractive to prospective retirees.

Tab 6
Long –Term Plan

Certified Retirement Community

Long Range Plan

Tab 6

Mission Statement

Paducah, Texas is a community known for its big heart, caring neighbors and friends always willing to lend a hand. The small town atmosphere combined with a low crime rate, entrepreneurial support and civic spirit attract retirees to this rugged ranch country. The American way of life is experienced everyday in this unique rural community located in the middle of nowhere, but in the heart of everything. Progress is being made to preserve what we have and prepare resources to ensure the future of the community.

Steps to Maintain Desirability

The steps Paducah has endorsed to maintain its desirability as a destination for retirees include:

- Make use of all the available services (website, state websites, TDA support, knowledge, and expertise of marketing trends, etc).
- Continue to market Paducah as located in the middle of nowhere, yet in the heart of everything...location, location, location.
- Continue to market Paducah as neighbors that are friendly, and caring in a small town community.
- Continue to market Paducah as a place where the entrepreneur can continue their own business or start one, as well as a place for those who want a place to “kick back” and relax by fishing, hunting, golfing or just sitting on their own porch enjoying the clean fresh air, peace and quiet.
- Continue to market Paducah as a small community with low crime rate and low taxes.
- Continue to encourage the emergency medical community in their endeavors to continue their fast response times and caring service.
- Create a central information center office to disperse information, answer questions and assist those looking for a place to retire/live in the area.

Plan to correct deficiencies identified in the retiree desirability assessment include:

- Seek incentives that will allow building of affordable housing both single and multi-family dwellings.
- Find and develop a more extensive public transportation system especially for the senior resident who can no longer drive their self.
- Seek incentives in order to bring dentist, pharmacist, and/or other physicians to Paducah.
- Continue to seek way to maintain the low tax rate we now have and give all the exemptions as authorized by the state constitution or those comparable as the county does already.
- Encourage neighbors to continue to watch out for each others' property—neighborhood crime watch, eventually organized as a group as necessary to maintain the low crime rate to which Paducah is accustomed.

Tab 7
**List of Community Retirement
Advisory Board**

Certified Retirement Community Board Tab 7

Rita Isbell
Phone 806-492-2743
risbell@cebridge.net

Box 109, Paducah, TX 79248
Family owned business of 35+years
Retired Texas Professional Educational
Diagnostician

Adelia Lee
Leeadelia1@yahoo.com
Phone: 806-492-3291

Box 3291, Paducah,, TX 79248
lifelong citizen of Paducah, Treasurer of Museum
Board, retired Insurance office and bank employee

Marilyn Parnell
Phone: 806-596-4478
parnell@caprock-spur.com

1185 US Hwy 83 South, Paducah, TX 79248
Rancher/farmers on family owned Cottle County
lands of more than 75 years, clerk and
bookkeeper for former Paducah business

Jan Irons
Phone: 806-492-2277
ironseenergy@hotmail.com

Box 787, Paducah, TX 79248
Born and raised in Cottle County, returned and is
now business owner and county/district clerk

Pat Taylor
ptaylor@caprock-spur.com
Phone: 806-492-3986

Box 72, Paducah, TX 79248
Retired city secretary of more than 25 years,
former 911 dispatcher, former President of Fire
Dept. Ladies' Aux.

Patsy and Donald Smith
(Co Members)
Phone: 806-49-23823
806-492-3788
desmith@caprock-spur.com

412 Ora St, Paducah, TX 79248
Business owner (Don), Executive Director of
Paducah Housing Authority (Patsy)

Patsy Kinney
Phone: 806-492-3150
Pkkinney31@hotmail.com

Box 626, Paducah,, Texas 79248
life long Cottle County resident,
Raised her family in Cottle county and worked as
bookkeeper for a gas distributor